

The Cottage

Les Gravees, St. Peter Port, Guernsey, GY1 1RL

🛏 x2 🚿 x1 PERRYS ?? TRP ??

- Bijou two-bedroom cottage.
- Walking distance from town centre.
- Parking for one vehicle.
- Private courtyard area with store room.
- Available immediately.
- Pets considered.
- Rent £2,700.
- Deposit £8,100.

£2,700pm

RENTAL - LOCAL MARKET

swoffers



rentals@swoffers.co.uk

01481 721757

Estate House, Ann's Place, St Peter Port, Guernsey, Channel Islands, GY1 2NU





About The Cottage

This cosy cottage is located within easy walking distance of the town centre. This charming two bedroom cottage is tucked away with its own gate leading to a private garden area with external store room. Recently redecorated and recarpeted, it would be perfect for a single occupant or a couple. Pets will be considered on a case by case basis. Available immediately for a one year term. Rent £2,700. Deposit £8,100.

ACCOMMODATION COMPRISING

GROUND FLOOR

Sun Lounge

13'1" x 9'10" (4m x 3m)

Kitchen

10'1" x 7'9" (3.07m x 2.36m)

Fitted with a range of light wood effect wall and base units with a small breakfast bar.

Lounge

12'4" x 12' (3.76m x 3.66m)

Bedroom 2 / Study

11'7" x 7' (3.53m x 2.13m)

FIRST FLOOR

Landing

Bathroom

6'8" x 5'10" (2.03m x 1.78m)

Three piece suit comprising WC, wash hand basin and bath with overhead shower.

Bedroom 1

12'5" x 12'2" (3.78m x 3.7m)

Cupboard with shelving. Cupboard containing hot water cylinder and storage space.

Appliances

Beko oven, Beko electric hob, Indesit washer / dryer and Firenzi fridge / freezer.

Furnishings

Unfurnished.

Outside

Parking for one vehicle and a south-west facing paved courtyard area with mature trees and useful store room.

Term

One year minimum.

Services

Mains electric, water and drainage.

Available

Immediately.

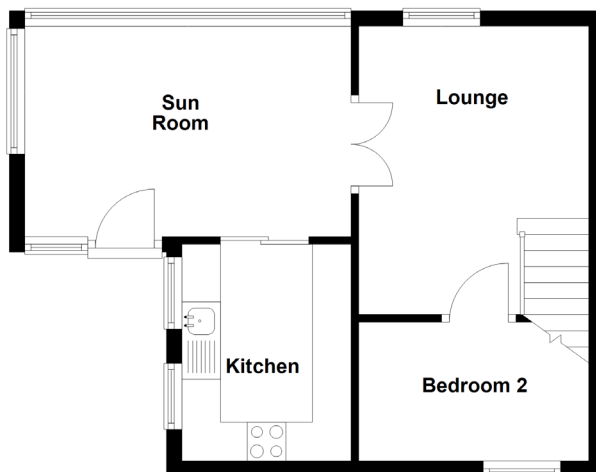
Rent

£2,700.

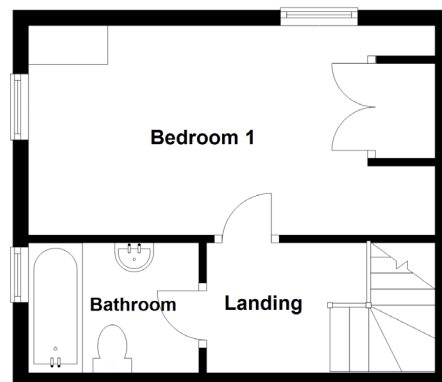
Deposit

£8,100.

Ground Floor



First Floor



swoffers



rentals@swoffers.co.uk

01481 721757

Estate House, Ann's Place, St Peter Port, Guernsey, Channel Islands, GY1 2NU

These particulars, whilst believed to be accurate are set out as a general outline only for guidance and do not constitute any part of an offer or contract. Sketch plans for illustrative purposes only. All measurements, walls, doors, windows, fittings and appliances, their sizes and locations are shown conventionally and are approximate only and cannot be regarded as being a representation either by the Vendor or their Agent, Swoffers Limited. Intending purchasers should not rely on them as statements or representations of fact or that the property or its services or any systems or equipment are in good condition, but must satisfy themselves by inspection or otherwise as to their accuracy and operative condition. Any reference to alterations to, or use of, any part of the property is not a statement that any necessary planning, building regulations or other consent has been obtained. These matters must be verified by any intending purchaser. No person in this firm's employment has the authority to make or give any representation or warranty in respect of the property.