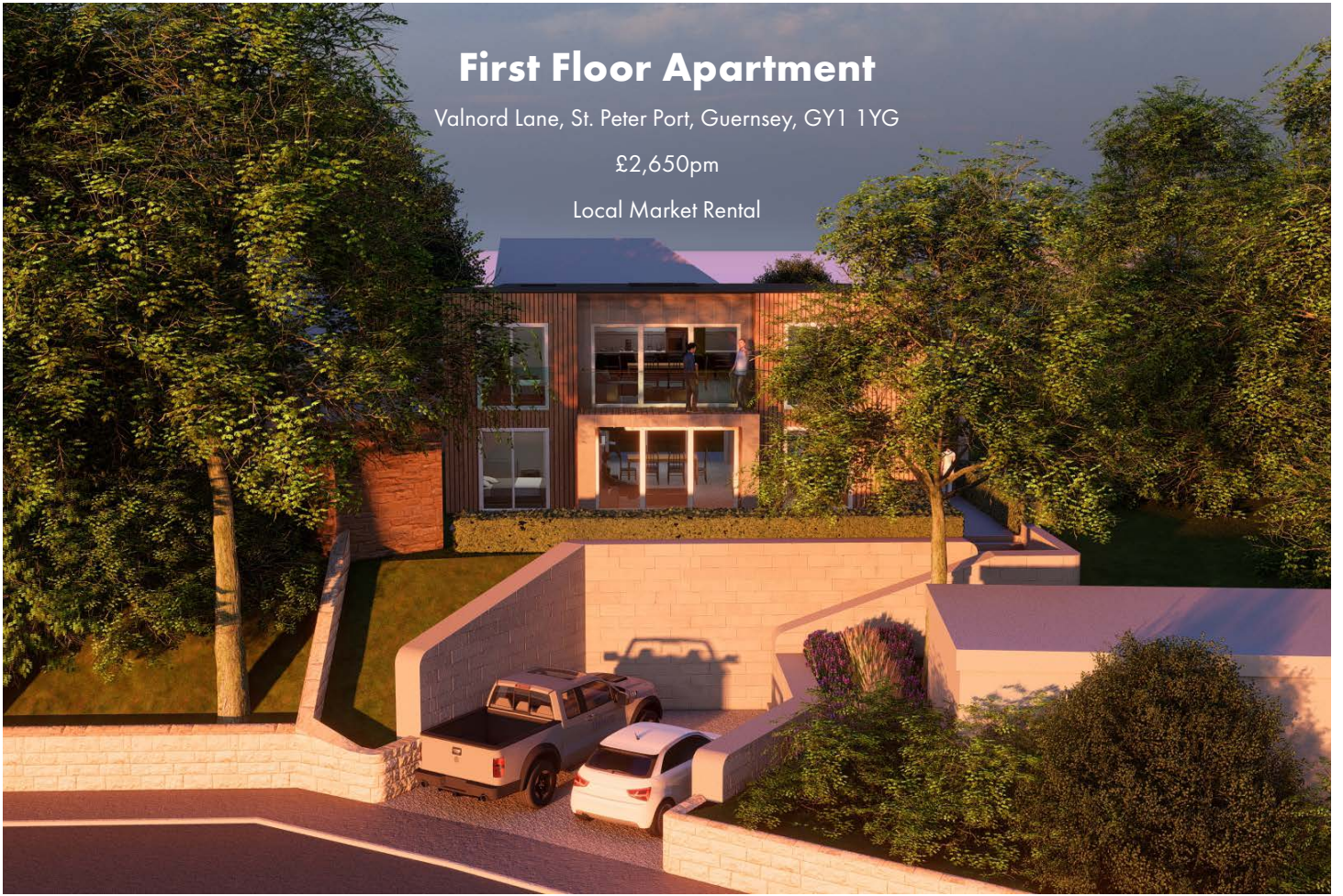


First Floor Apartment

Valnord Lane, St. Peter Port, Guernsey, GY1 1YG

£2,650pm

Local Market Rental



swoffers



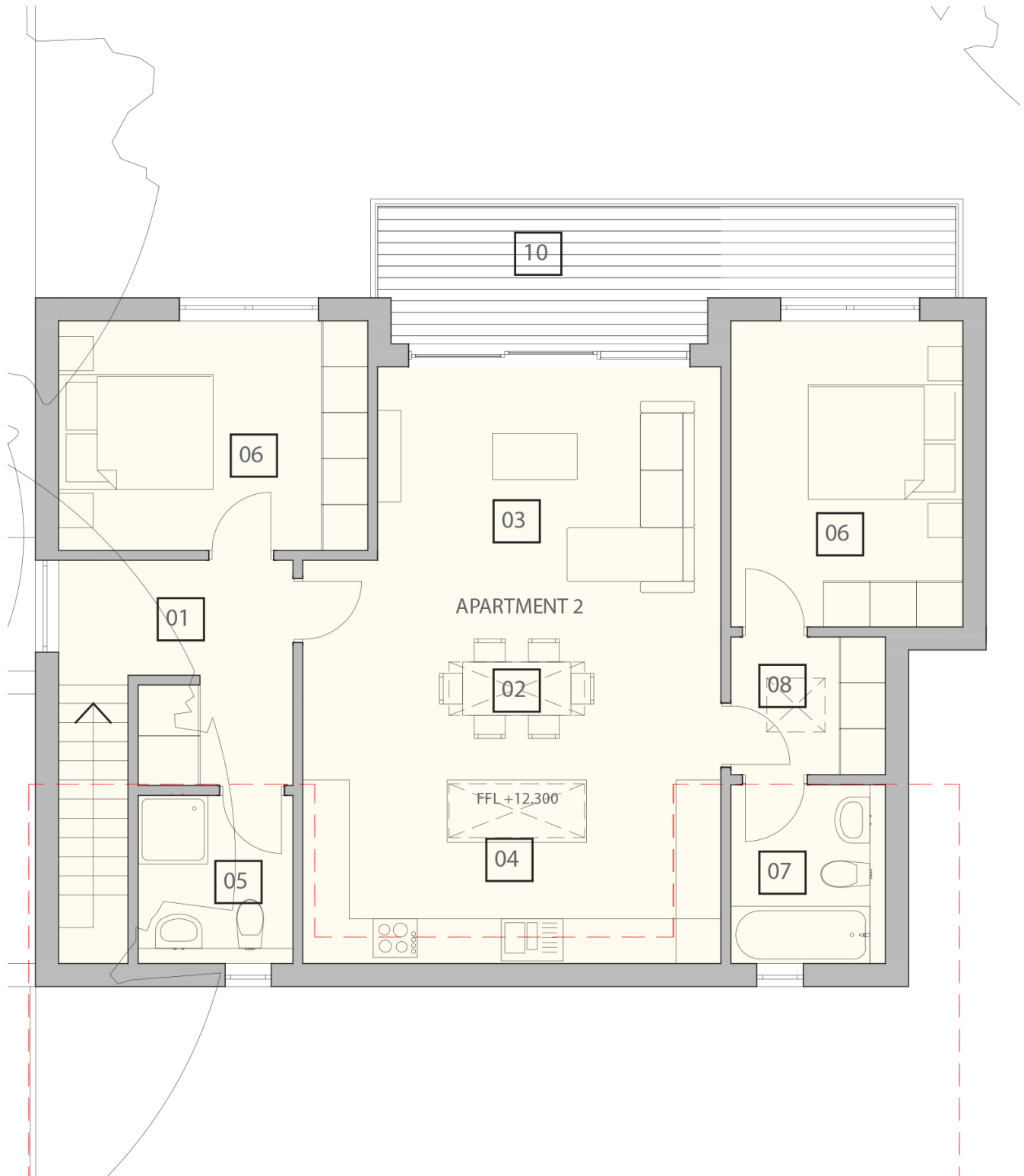
rentals@swoffers.co.uk

01481 721757

Estate House, Ann's Place, St Peter Port, Guernsey, Channel Islands, GY1 2NU

About First Floor Apartment

This recently built two-bedroom, two-bathroom apartment offers high-specification living in a convenient St Peter Port location close to local amenities. Designed with a clean, modern finish throughout and with high energy standards, the property features spacious interiors, balcony, outdoor area, and dedicated parking. Ideal for professional couples, sharers, or small families, it provides a comfortable and stylish home for those who appreciate contemporary living. Regret no pets. £2,650pm. Available June 2026.



swoffers



rentals@swoffers.co.uk

01481 721757

Estate House, Ann's Place, St Peter Port, Guernsey, Channel Islands, GY1 2NU

These particulars, whilst believed to be accurate are set out as a general outline only for guidance and do not constitute any part of an offer or contract. Sketch plans for illustrative purposes only. All measurements, walls, doors, windows, fittings and appliances, their sizes and locations are shown conventionally and are approximate only and cannot be regarded as being a representation either by the Vendor or their Agent, Swoffers Limited. Intending purchasers should not rely on them as statements or representations of fact or that the property or its services or any systems or equipment are in good condition, but must satisfy themselves by inspection or otherwise as to their accuracy and operative condition. Any reference to alterations to, or use of, any part of the property is not a statement that any necessary planning, building regulations or other consent has been obtained. These matters must be verified by any intending purchaser. No person in this firm's employment has the authority to make or give any representation or warranty in respect of the property.