



4 Mahaut Villas

Collings Road, St. Peter Port, Guernsey, GY1 1FP

🚗 x2 🚿 x1 PERRYS 2 A3 TRP 171

- Modern and stylish two bedroom home
- Fully furnished by negotiation
- Parking for three cars
- Available 6th July 2026
- Sunny enclosed patio and lawned garden
- Rent £3,300 per month inclusive of Fibre Broadband
- Large open plan living and dining space
- Deposit £3,300

£3,300pm

RENTAL - LOCAL MARKET

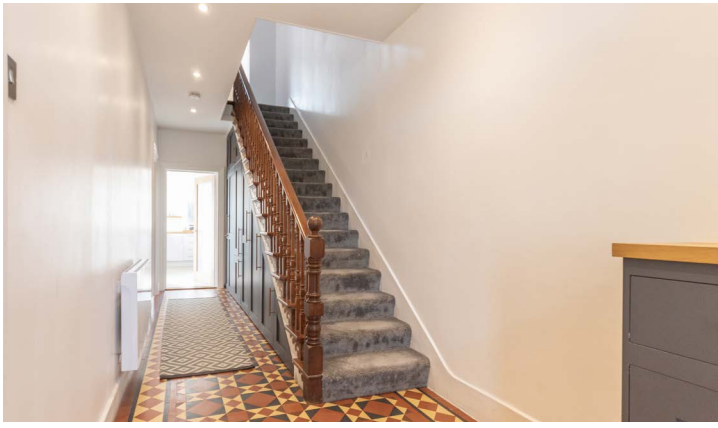
swoffers



rentals@swoffers.co.uk

01481 721757

Estate House, Ann's Place, St Peter Port, Guernsey, Channel Islands, GY1 2NU





About 4 Mahaut Villas

4 Mahaut Villas is a stylish and bright two bedroom property finished to a high standard in a central location. The property comprises of an open living and dining space with a separate equipped kitchen. On the first floor there are two double bedrooms both fitted with a full run of wardrobe space, a study room along with a large family bathroom and an additional WC. Externally, the property offers a sunny garden with both a lawned area and a patio area along with a shed for storage. To the front, the property offers parking for three cars. Children accepted, pets may be considered on a case by case basis. Available 6th July 2026 by negotiation.



ACCOMMODATION COMPRISING

GROUND FLOOR

Entrance Hall

6'5" x 24'4" (1.96m x 7.42m)
Fitted storage

Open plan living/dining area

13'7" x 25'2" (4.14m x 7.67m)
Inbuilt storage

Kitchen

13'6" x 8'6" (4.11m x 2.6m)

WC

3'6" x 4'4" (1.07m x 1.32m)

FIRST FLOOR

Upstairs landing

6'6" (1.97) minimum x 20'4" (6.21) maximum

Bathroom

9'1" x 8'9" (2.77m x 2.67m)

Bedroom 1

13' x 11'11" (3.96m x 3.63m)
Fitted wardrobes

Bedroom 2

12' x 11'8" (3.66m x 3.56m)
Fitted wardrobes

Study

8'2" x 7'10" (2.5m x 2.4m)

Appliances

Integrated Neff dishwasher, Neff double oven and electric hob, Neff integrated full size fridge/freezer, Hotpoint tumble dryer, Hotpoint washing machine, additional integrated Neff fridge/freezer.

Furnishings

Fully furnished by negotiation.

Outside Front

Parking for three cars, paved driveway with access to the side of the property.

Outside Rear

Paved area, grass lawn area and slabbed area. Two outdoor storage units (one to be retained for the Landlords use and one to be for the Tenants use).

Term

One year minimum.

Services

Mains electricity, water and drainage. Electric underfloor heating.

Available

6th July 2026.

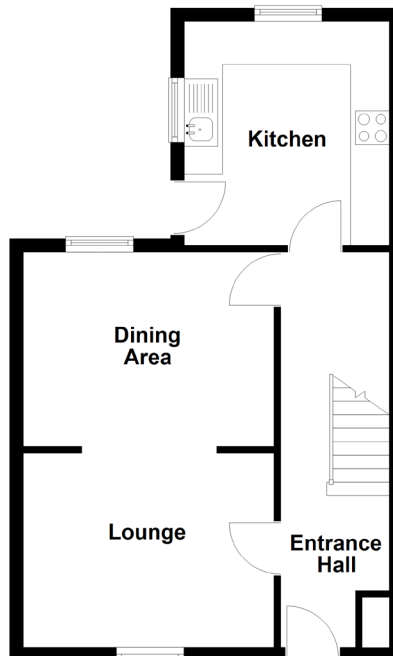
Rent

£3,300 per month inclusive of fibre broadband.

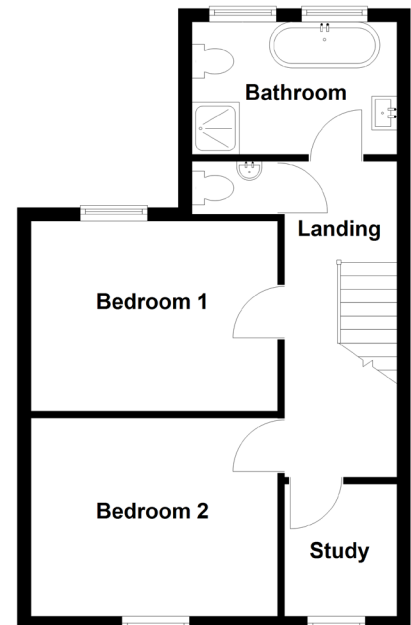
Deposit

£3,300 minimum.

Ground Floor



First Floor



swoffers



rentals@swoffers.co.uk

01481 721757

Estate House, Ann's Place, St Peter Port, Guernsey, Channel Islands, GY1 2NU

These particulars, whilst believed to be accurate are set out as a general outline only for guidance and do not constitute any part of an offer or contract. Sketch plans for illustrative purposes only. All measurements, walls, doors, windows, fittings and appliances, their sizes and locations are shown conventionally and are approximate only and cannot be regarded as being a representation either by the Vendor or their Agent, Swoffers Limited. Intending purchasers should not rely on them as statements or representations of fact or that the property or its services or any systems or equipment are in good condition, but must satisfy themselves by inspection or otherwise as to their accuracy and operative condition. Any reference to alterations to, or use of, any part of the property is not a statement that any necessary planning, building regulations or other consent has been obtained. These matters must be verified by any intending purchaser. No person in this firm's employment has the authority to make or give any representation or warranty in respect of the property.