



No. 3, Gorey Drive

Route Des Coutures, Vale, GY3 5QT

🛏 x2 🚿 x1 PERRYS 11 F1 TRP 77

- Modern two bedroom apartment
- Fitted to a high specification throughout
- Convenient Vale location
- Parking & private outside space
- Large unit which commands top floor
- Children considered
- Available mid August 2026
- £2,300 per month. £2,300 deposit

£2,300pm

RENTAL - LOCAL MARKET

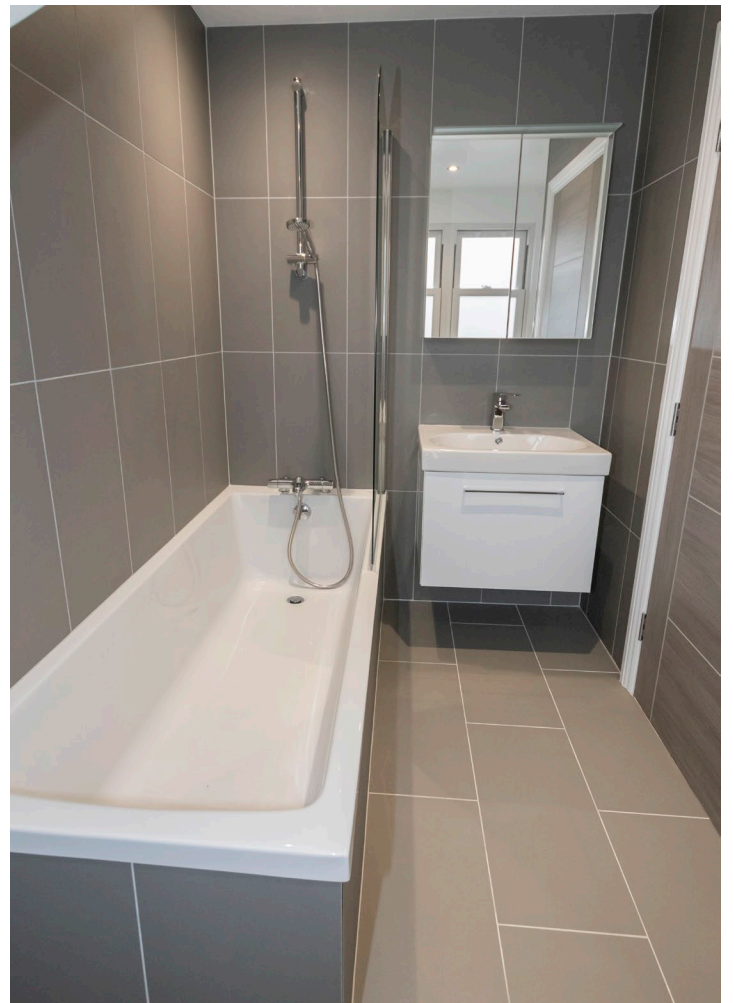
swoffers



rentals@swoffers.co.uk | 01481 721757

Estate House, Ann's Place, St Peter Port, Guernsey, Channel Islands, GY1 2NU





About No. 3, Gorey Drive

No 3 Gorey Drive is a modern two bedroom apartment situated on Route Des Coutures, just a short walk to the Bridge and local amenities. Set within a building of just 3 units, number 3 itself commands the whole top floor. The property has been fitted to a high specification throughout which includes an array of fitted furniture. Internally, spacious, bright rooms make for a welcoming ambience. Externally, there is allocated parking for one car and a fully enclosed, private outside space. Available mid August 2026. Children considered. £2,300 per month.

ACCOMMODATION COMPRISING

Entrance Hall

7'2" x 3'8" (2.18m x 1.12m)

Landing

8' x 2'7" (2.44m x 0.79m)

FIRST FLOOR

Landing

15'5" x 2'5" (4.7m x 0.74m)

Bathroom

8'2" x 5'10" (2.5m x 1.78m)

Bedroom 2

12'2" x 8'6" (3.7m x 2.6m)

Bedroom 1

13' x 9'2" (3.96m x 2.8m)

Open Plan Kitchen/Living/Dining Room

25'7" x 14'8" (7.8m x 4.47m)

Appliances

Full height Zanussi fridge/freezer, single electric Zanussi oven with four ring induction hob and extractor fan over, AEG integrated combi oven, Zanussi full size dishwasher and Zanussi washer/dryer.

Furnishings

Unfurnished but with appliances as listed and blinds and curtains throughout.

OUTSIDE

Allocated parking for one car and an enclosed private outside space.

Term

One year minimum.

Services

Mains electricity, water and drainage. Electric heating.

Available

Mid August 2026.

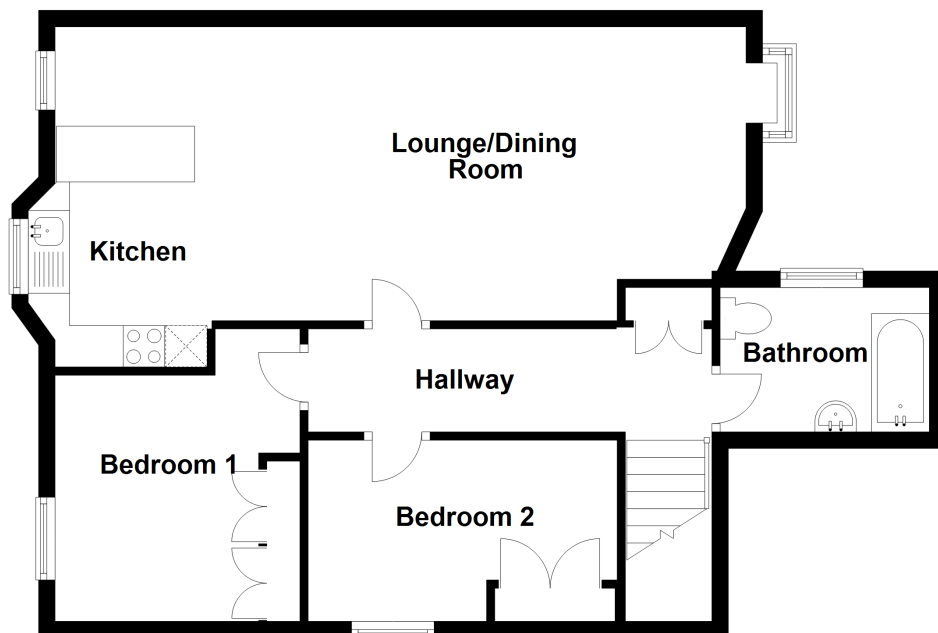
Rent

£2,300.

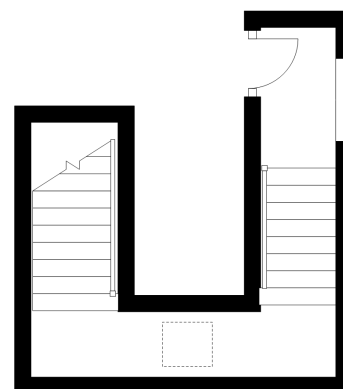
Deposit

£2,300.

First Floor



Ground Floor



swoffers



rentals@swoffers.co.uk | 01481 721757

Estate House, Ann's Place, St Peter Port, Guernsey, Channel Islands, GY1 2NU

These particulars, whilst believed to be accurate are set out as a general outline only for guidance and do not constitute any part of an offer or contract. Sketch plans for illustrative purposes only. All measurements, walls, doors, windows, fittings and appliances, their sizes and locations are shown conventionally and are approximate only and cannot be regarded as being a representation either by the Vendor or their Agent, Swoffers Limited. Intending purchasers should not rely on them as statements or representations of fact or that the property or its services or any systems or equipment are in good condition, but must satisfy themselves by inspection or otherwise as to their accuracy and operative condition. Any reference to alterations to, or use of, any part of the property is not a statement that any necessary planning, building regulations or other consent has been obtained. These matters must be verified by any intending purchaser. No person in this firm's employment has the authority to make or give any representation or warranty in respect of the property.