



3, Val Fleury

Hauteville, St. Peter Port, GY1 1DH

🛏 x3 🚿 x1 PERRYS 8 J11 TRP 133

- Three bedroom home
- Accommodation over three floors
- Quiet position, close to Town
- Parking for two cars
- Low maintenance garden
- Rent £2,900 per month
- Deposit £2,900
- Available end of July 2026

£2,900pm

RENTAL - LOCAL MARKET

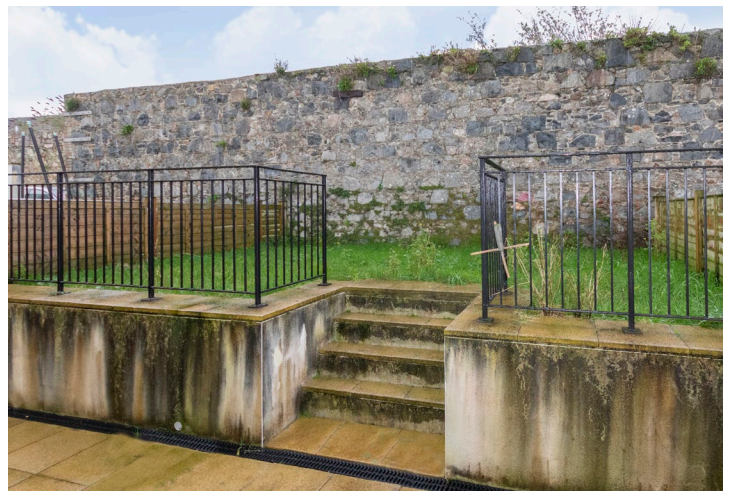
swoffers



rentals@swoffers.co.uk

01481 721757

Estate House, Ann's Place, St Peter Port, Guernsey, Channel Islands, GY1 2NU





About 3, Val Fleury

Part of a stunning modern development in an elevated spot above Town and just a short stroll from the shops and amenities of St Peter Port, 3 Val Fleury provides spacious, contemporary and low maintenance living with three bedrooms, open plan kitchen/diner, living room, luxury bathroom and separate WC. Finished to the highest specification, with quality fixtures and fittings throughout including Italian kitchen this lovely home offers smart and sleek accommodation with ease of maintenance. Externally, there is parking for two cars and an enclosed rear garden. Available end of July 2026. Regret no pets, sharers or smokers.

ACCOMMODATION COMPRISING

GROUND FLOOR

Entrance Hall

21'8" x 6'6" (6.6m x 1.98m)

Kitchen / Dining Room

24'8" x 10' (7.52m x 3.05m)

Separate WC

5'3" x 3'7" (1.6m x 1.1m)

FIRST FLOOR

Landing

17'3" x 6'6" (5.26m x 1.98m)

Lounge

17'1" x 12'6" (5.2m x 3.8m)

Bedroom 3

10' x 9'11" (3.05m x 3.02m)

SECOND FLOOR

Landing

15'7" x 6'6" (4.75m x 1.98m)

Bedroom 2

9'5" x 10' (2.87m x 3.05m)

Bedroom 1

12'5" x 10' (3.78m x 3.05m)

Bathroom

6'6" x 8'5" (1.98m x 2.57m)

Appliances

Neff appliances comprising single electric oven, 4-ring ceramic hob, extractor, washing machine, dishwasher and fridge/freezer.

Furnishings

Unfurnished, but with appliances as listed and blinds/curtains as fitted.

OUTSIDE

To the front there is parking for two cars and to the rear, a low-maintenance enclosed garden with patio and artificial grass lawn.

Term

One year minimum.

Services

Mains electric, water and drainage. Electric heating.

Available

End of July 2026.

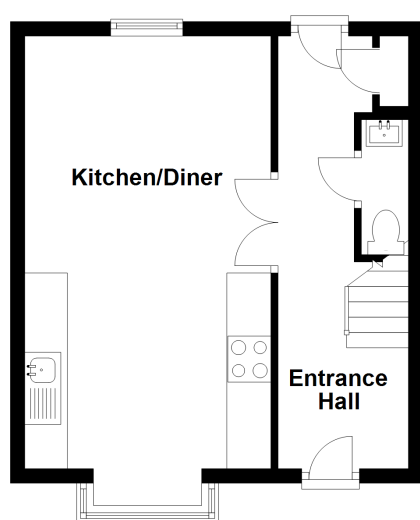
Rent

£2,900 per month.

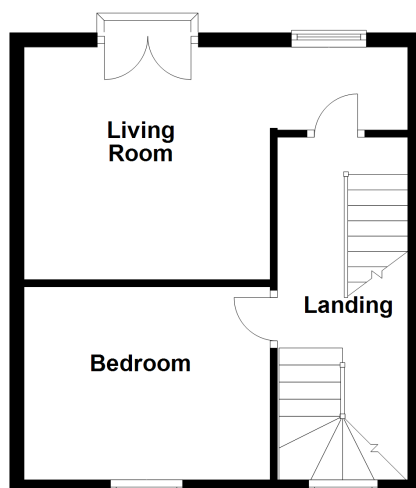
Deposit

£2,900.

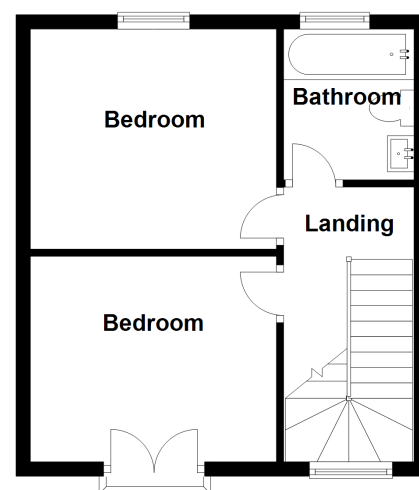
Ground Floor



First Floor



Second Floor



swoffers



rentals@swoffers.co.uk

01481 721757

Estate House, Ann's Place, St Peter Port, Guernsey, Channel Islands, GY1 2NU

These particulars, whilst believed to be accurate are set out as a general outline only for guidance and do not constitute any part of an offer or contract. Sketch plans for illustrative purposes only. All measurements, walls, doors, windows, fittings and appliances, their sizes and locations are shown conventionally and are approximate only and cannot be regarded as being a representation either by the Vendor or their Agent, Swoffers Limited. Intending purchasers should not rely on them as statements or representations of fact or that the property or its services or any systems or equipment are in good condition, but must satisfy themselves by inspection or otherwise as to their accuracy and operative condition. Any reference to alterations to, or use of, any part of the property is not a statement that any necessary planning, building regulations or other consent has been obtained. These matters must be verified by any intending purchaser. No person in this firm's employment has the authority to make or give any representation or warranty in respect of the property.