



35 Domaine de Beauport

Hauteville, St. Peter Port, GY1 1DL

 x4  x2 PERRYS 25 F2 TRP 149

- Modern four bedroom, two bathroom home
- Two parking spaces, enclosed courtyard and balcony
- Stylish and spacious kitchen/living room
- Rent £3,200 per month
- Well regarded development on outskirts of St Peter Port
- Deposit £6,400
- Elevated views over town centre and towards East Coast
- Available 1st September 2026

£3,200pm

RENTAL - LOCAL MARKET

swoffers



rentals@swoffers.co.uk | 01481 721757

Estate House, Ann's Place, St Peter Port, Guernsey, Channel Islands, GY1 2NU





About 35 Domaine de Beauport

This modern home is situated on a well regarded clos on the outskirts of St Peter Port, on an elevated site with views across the rooftops and towards the east coast and offshore islands. The property offers four bedrooms, two bathrooms, parking for two cars and a low maintenance courtyard. Further to this, the ground floor has been extended to create a luxurious open plan kitchen/living space with top of the range appliances and doors opening directly out onto the patio with the added bonus of a terrace on top of this room accessed from the third bedroom. A super low maintenance home, ideal for those looking for stylish accommodation in a convenient position. Available 1st September 2026

ACCOMMODATION COMPRISING

GROUND FLOOR

Entrance Hall

9' x 6'6" (2.74m x 1.98m)

Tiled flooring. Stairs to First Floor.

Kitchen/Dining/Living Space

36'11" (11.25) x 6'11" (2.11) x 15'9" (4.80) x 15' (4.56)

Multi-fuel stove in attractive granite surround. Bi-fold doors leading to the patio.

FIRST FLOOR

Landing

18'1" x 6'4" (5.5m x 1.93m)

Bathroom

8'6" x 7'1" (2.6m x 2.16m)

Office/Bedroom 4

9'3" x 9'6" (2.82m x 2.9m)

Door to balcony.

Bedroom 2

9'1" x 13'2" (2.77m x 4.01m)

SECOND FLOOR

Landing

6'6" x 3'5" (1.98m x 1.04m)

Bedroom 3

7'9" x 8'11" (2.36m x 2.72m)

Bedroom 1

12'11" (3.94) x 10' (3.05) min & 15'8" (4.77) max

En-suite Bathroom

12'1" x 6'6" (3.68m x 1.98m)

OUTSIDE

Front

The front of the property is approached over a private road. Gravelled fore garden and steps leading up to the front door. Side access to the...

Rear

Which is fully enclosed by attractive granite walls. The garden has been laid to patio and gravel. Garden shed. The property also has allocated parking for two cars.

Appliances

Neff appliances comprising induction hob, extractor, oven, combi-oven, slimline dishwasher, washer/dryer, fridge and freezer. Zipp hydro taps.

Furnishings

Unfurnished, but with appliances as listed and blinds/curtains as fitted.

Services

All mains services. Full gas central heating.

Available

1st September 2026.

Term

One year minimum.

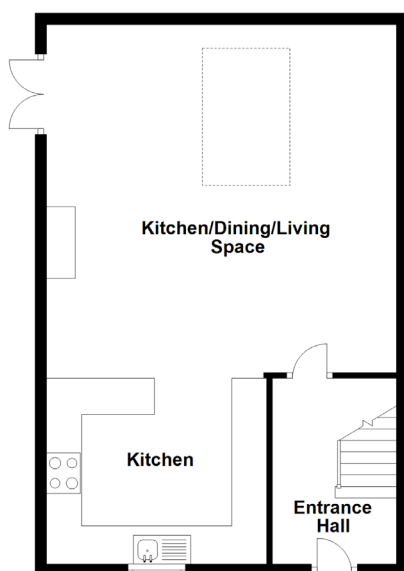
Rent

£3,200 per month.

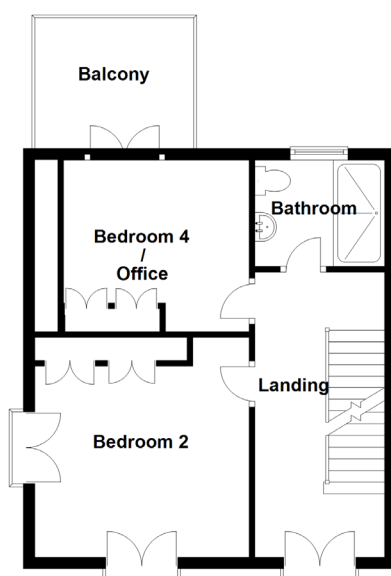
Deposit

£6,400.

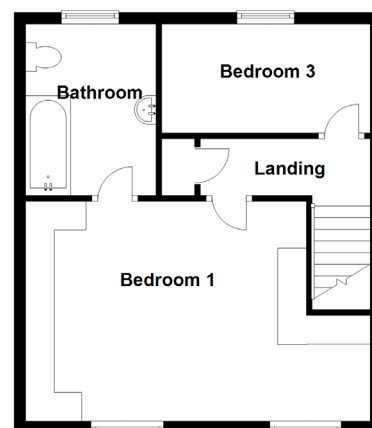
Ground Floor



First Floor



Second Floor



swoffers



rentals@swoffers.co.uk | 01481 721757

Estate House, Ann's Place, St Peter Port, Guernsey, Channel Islands, GY1 2NU

These particulars, whilst believed to be accurate are set out as a general outline only for guidance and do not constitute any part of an offer or contract. Sketch plans for illustrative purposes only. All measurements, walls, doors, windows, fittings and appliances, their sizes and locations are shown conventionally and are approximate only and cannot be regarded as being a representation either by the Vendor or their Agent, Swoffers Limited. Intending purchasers should not rely on them as statements or representations of fact or that the property or its services or any systems or equipment are in good condition, but must satisfy themselves by inspection or otherwise as to their accuracy and operative condition. Any reference to alterations to, or use of, any part of the property is not a statement that any necessary planning, building regulations or other consent has been obtained. These matters must be verified by any intending purchaser. No person in this firm's employment has the authority to make or give any representation or warranty in respect of the property.