

SOLE
AGENT



Driftwood

32 Clos Des Mielles, Route de La Mare De Carteret, Castel, GY5 7XB

 x3  x2 PERRYS 8 B3 TRP 165

Pets Considered: 

- Detached three bedroom family home
- Short walk to Cobo beach and amenities
- Garage and good parking
- Rent £3,000 per month
- Fully enclosed low maintenance garden
- Deposit £6,000
- Balcony with rural and west coast views
- Available Immediately.

£3,000pm

RENTAL - LOCAL MARKET

swoffers



rentals@swoffers.co.uk

01481 721757

Estate House, Ann's Place, St Peter Port, Guernsey, Channel Islands, GY1 2NU





About Driftwood

This lovely family home is located within a short walk of the highly popular beaches and village at Cobo. Smart and practical, the house offers three bedrooms and two bathrooms, sun room, large reception room and kitchen / diner. A particular highlight leading from the landing is the south facing balcony, which offers stunning views over the playing fields and towards the west coast, with glimmers of the sea. Lastly there is a fully enclosed, low maintenance rear garden comprising of brick paving, gravel and decking, complete with jacuzzi! Ample parking leading to a single garage with storage above completes this wonderful home. Children accepted and pets considered. Available Immediately.



ACCOMMODATION COMPRISING

GROUND FLOOR

Entrance Hall

16' x 2'11" (4.88m x 0.9m)

Separate WC

4'10" x 2'5" (1.47m x 0.74m)

Lounge

25'4" x 11' (7.72m x 3.35m)

Kitchen / Diner

17' max x 17'5" max (5.18m max x 5.3m max)
L-shaped room.

Sunroom

9'9" x 7'2" (2.97m x 2.18m)

Shower Room

8'3" x 4'7" (2.51m x 1.4m)

Integrated Garage

15'8" x 8'2" (4.78m x 2.5m)

FIRST FLOOR

Landing

9'4" x 5'10" (2.84m x 1.78m)

Balcony

9'9" x 7'2" (2.97m x 2.18m)

Bathroom

7' x 5'6" (2.13m x 1.68m)

Bedroom 2

12'9" x 9'11" (3.89m x 3.02m)

Bedroom 1

12'9" x 10'1" (3.89m x 3.07m)
To front of wardrobes.

Bedroom 3

10'5" x 7' (3.18m x 2.13m)

Appliances

Hotpoint four ring ceramic hob with stainless steel extractor hood above. Hotpoint stainless steel single integrated oven, integrated Neff fridge, integrated Neff dishwasher and integrated AEG freezer.

Furnishings

Unfurnished, but with appliances as listed and blinds/curtains as fitted.

OUTSIDE

Front

The property is situated at the edge of the clos which leads to the tarmac and brick paved driveway with parking for several cars. The fore garden is laid to gravel and is

planted with mature shrubs, plants and trees bounded by mature high level hedging and rendered wall.

Side Garden

Low maintenance gravel garden with mature shrubs, trees and plants. Brick paved path down side of garage. Gate to...

Rear

Enclosed landscaped rear garden with decked area and jacuzzi.

Please note, should tenants wish

to use the jacuzzi, they will be responsible for the costs associated with setting it up and running it.

Services

All mains. Full oil fired central heating.

Available

Immediately.

Term

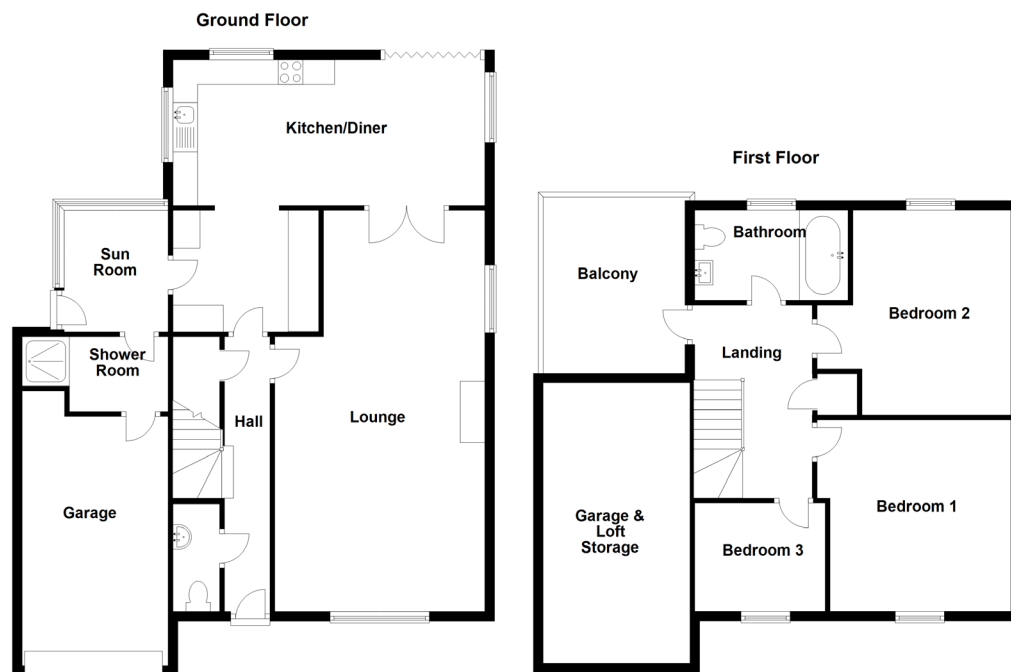
Two years minimum.

Rent

£3,000 per month.

Deposit

£6,000.



swoffers



rentals@swoffers.co.uk

01481 721757

Estate House, Ann's Place, St Peter Port, Guernsey, Channel Islands, GY1 2NU

These particulars, whilst believed to be accurate are set out as a general outline only for guidance and do not constitute any part of an offer or contract. Sketch plans for illustrative purposes only. All measurements, walls, doors, windows, fittings and appliances, their sizes and locations are shown conventionally and are approximate only and cannot be regarded as being a representation either by the Vendor or their Agent, Swoffers Limited. Intending purchasers should not rely on them as statements or representations of fact or that the property or its services or any systems or equipment are in good condition, but must satisfy themselves by inspection or otherwise as to their accuracy and operative condition. Any reference to alterations to, or use of, any part of the property is not a statement that any necessary planning, building regulations or other consent has been obtained. These matters must be verified by any intending purchaser. No person in this firm's employment has the authority to make or give any representation or warranty in respect of the property.