



WALTON DU VARCLIN

GUERNSEY





WALTON DU VARCLIN

GUERNSEY

SOLE AGENT £8,750,000

SPECTACULAR CLIFF TOP HOME

If you are looking for an immaculate home with a breathtaking view, total privacy, a beautifully manicured garden, substantial garaging then Walton du Varelin has it all. Located above Fermain Bay on Guernsey's east coast with sea views over to the offshore Islands of Sark and Herm, the house offers beautifully proportioned, well presented accommodation. It was built and is meticulously maintained to an exacting standard by the current owners, and recently sympathetically extended 5 years ago. The house now offers a thoroughly modern kitchen/family room enjoying the best of the views as well as 3 further reception rooms, excellent utility room and cloakroom on the ground floor. On the first floor there are 4 bedrooms with ensuite bathrooms, 3 of which enjoy the fabulous sea views. The house has been finished to a superb standard using natural materials including oak, cedar and limestone. The grounds extend to approximately 2 acres including a woodland area with a view into Fermain Bay and a manicured lawn and generous terrace with sea and Island views. At the front of the house is a paved driveway leading from the quiet lane and a generous detached garage for up to 7 cars. Walton Du Varelin is a stunning property with many unique features and presents a rare opportunity to own a very special home in Guernsey.

Shauna Clapham & Craig Whitman

shauna@swoffers.co.uk | craig@swoffers.co.uk





Breathtaking sea views

Immaculate home

Approximately 2-acre site

Built by the current owners

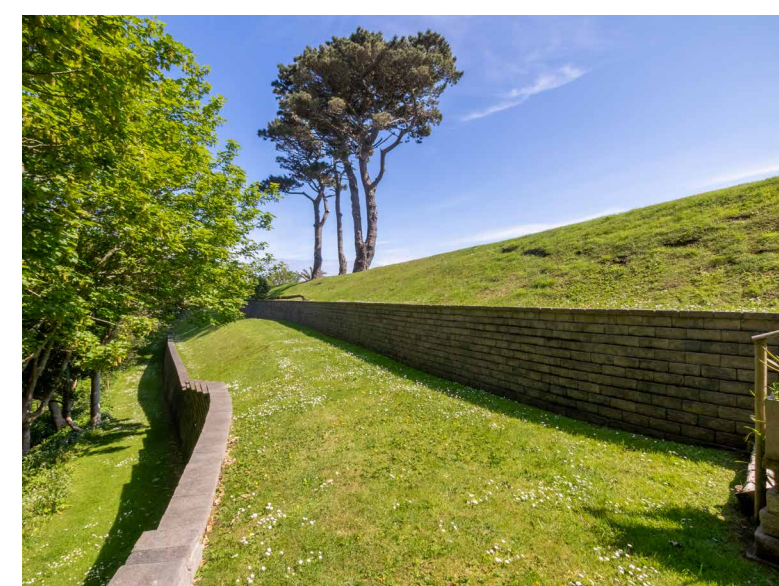
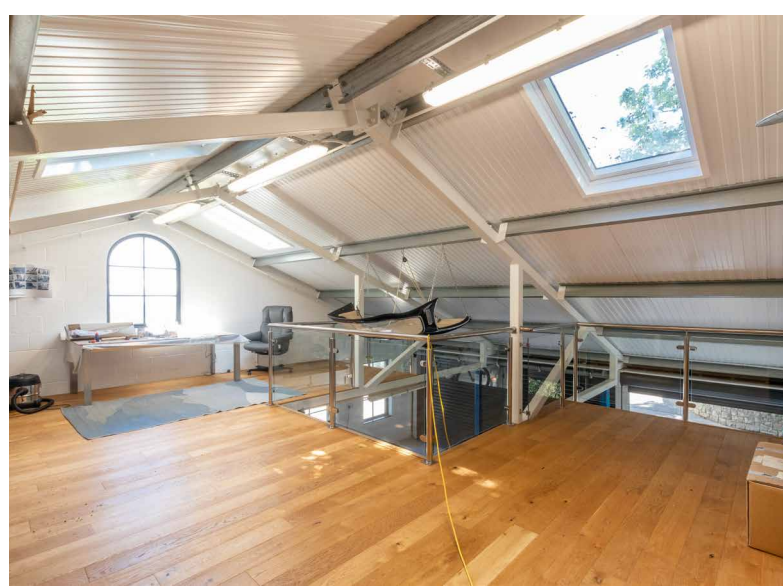
Manicured lawn and generous patio

4 bedrooms suites

Stunning kitchen/living room

3 further reception rooms

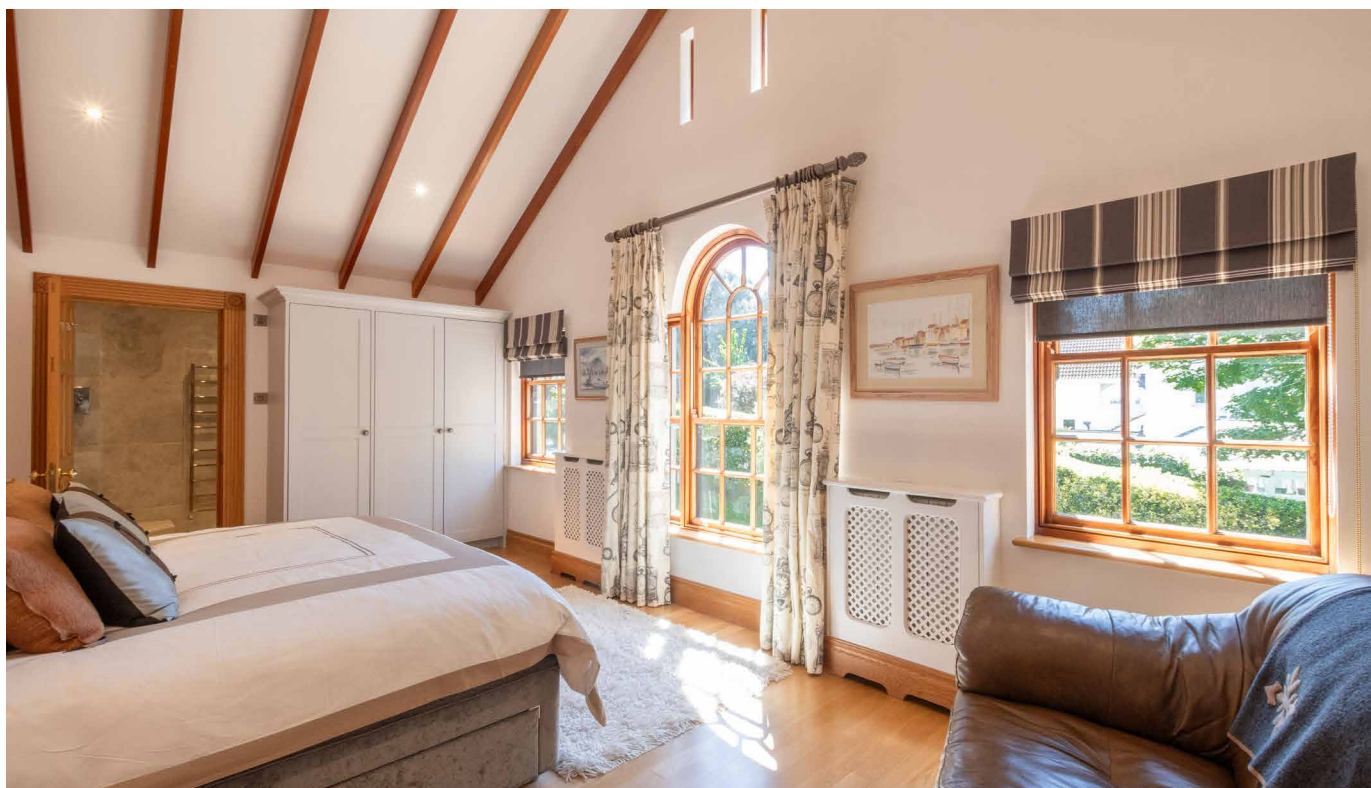
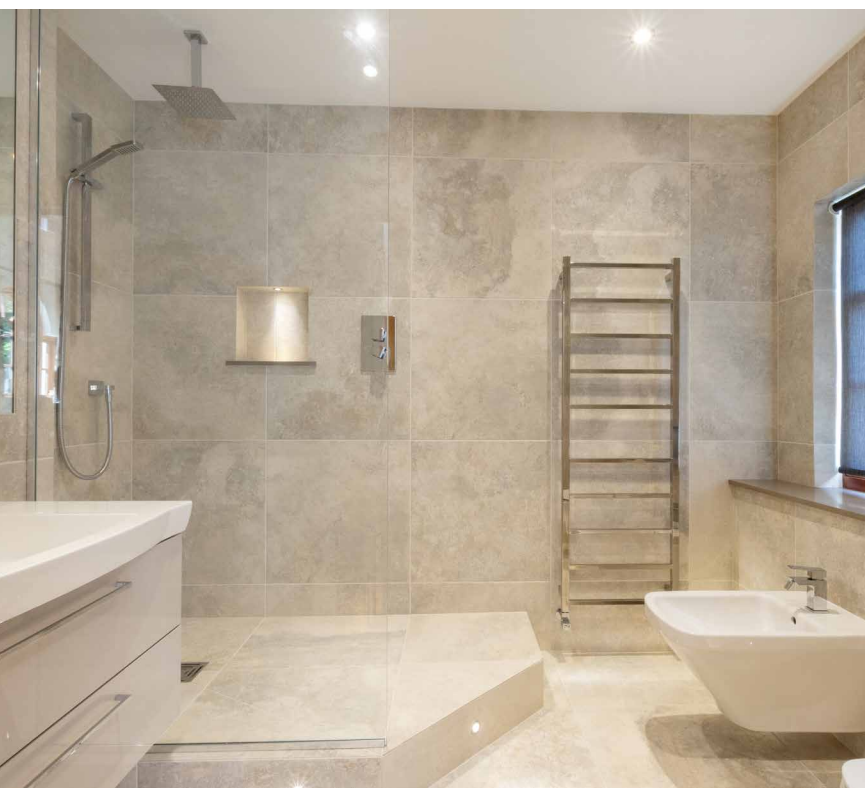
7 car garage

















Walton Du Varclin

Approximate total area

4148 ft²

385.6 m²

Balconies and terraces

84 ft²

7.8m²



Ground Floor



Floor 1

swoffers

+44 (0) 1481 711766

www.swoffers.co.uk

These particulars, whilst believed to be accurate are set out as a general outline only for guidance and do not constitute any part of an offer or contract. Sketch plans for illustrative purposes only. All measurements, walls, doors, windows, fittings and appliances, their sizes and locations are shown conventionally and are approximate only and cannot be regarded as being a representation either by the Vendor or their Agent, Swoffers Limited. Intending purchasers should not rely on them as statements or representations of fact or that the property or its services or any systems or equipment are in good condition, but must satisfy themselves by inspection or otherwise as to their accuracy and operative condition. Any reference to alterations to, or use of, any part of the property is not a statement that any necessary planning, building regulations or other consent has been obtained. These matters must be verified by any intending purchaser. No person in this firm's employment has the authority to make or give any representation or warranty in respect of the property.