



Flat 1, 8 Hauteville

St Peter Port, GY1 1LL

 x1  x1 **PERRYS K10 TRP 64**

- Beautiful one bedroom apartment
- Available immediately
- Popular location in town
- Rent £1,550 per month
- Part furnished
- Deposit £2,325

£1,550pm

RENTAL - LOCAL MARKET

swoffers



rentals@swoffers.co.uk

01481 721757

Estate House, Ann's Place, St Peter Port, Guernsey, Channel Islands, GY1 2NU





About Flat 1, 8 Hauteville

This beautifully appointed one bedroom, part furnished apartment has been finished to a high standard throughout including solid wood flooring and feature fireplace in the living room. Located in a very popular residential area of town, just a short stroll from shops, restaurants and bars. Available immediately.

ACCOMMODATION COMPRISING

Entrance Porch

5'10" x 6' (1.78m x 1.83m)

Kitchen

8'4" x 6'8" (2.54m x 2.03m)

Living Room

15'2" (4.62) x 11'11" (3.63) and 8'8" (2.64) min.

Bedroom

11'1" x 9'3" (3.38m x 2.82m)

Bathroom

9' (2.74) max x 4'10" (1.47) min and 9'1" (2.77) max and 6'5" (1.96) min.

Utility

3'1" x 6'8" (0.94m x 2.03m)

Furnishings

Part furnished with blinds and light fittings as seen.

Appliances

Double oven with four ring electric hob and stainless steel and glass extractor over, dishwasher, fridge and freezer, washing machine and tumble dryer.

Services

Mains electricity, water and drainage. Electric heating.

Available

Immediately.

Term

One year minimum.

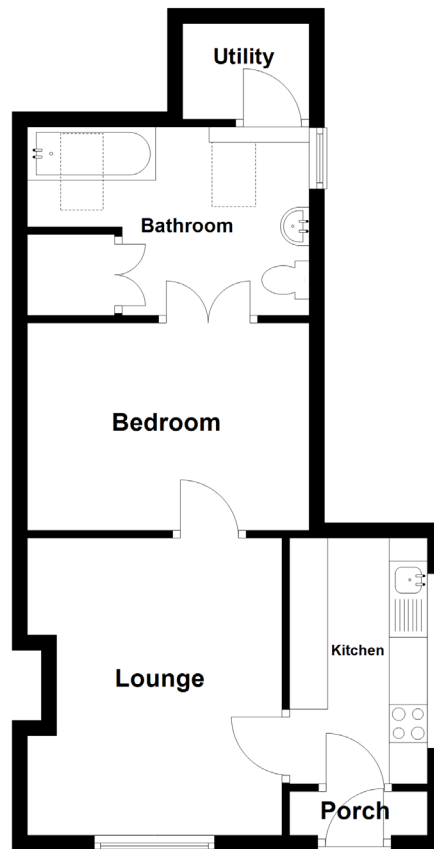
Rent

£1,550 per month.

Deposit

£2,325.

Ground Floor



swoffers



rentals@swoffers.co.uk

01481 721757

Estate House, Ann's Place, St Peter Port, Guernsey, Channel Islands, GY1 2NU

These particulars, whilst believed to be accurate are set out as a general outline only for guidance and do not constitute any part of an offer or contract. Sketch plans for illustrative purposes only. All measurements, walls, doors, windows, fittings and appliances, their sizes and locations are shown conventionally and are approximate only and cannot be regarded as being a representation either by the Vendor or their Agent, Swoffers Limited. Intending purchasers should not rely on them as statements or representations of fact or that the property or its services or any systems or equipment are in good condition, but must satisfy themselves by inspection or otherwise as to their accuracy and operative condition. Any reference to alterations to, or use of, any part of the property is not a statement that any necessary planning, building regulations or other consent has been obtained. These matters must be verified by any intending purchaser. No person in this firm's employment has the authority to make or give any representation or warranty in respect of the property.