



THE LOOKOUT

Port Vase, St Peter Port, GY1 2PP

LOCAL MARKET

£1,850pm

One bedroom unfurnished apartment | Recently renovated throughout to a high standard
Fantastic sea views | Walking distance of Town | Plenty of on street parking nearby
Available mid August 2026 | Rent £1,850 per month | Deposit £1,850



swoffers

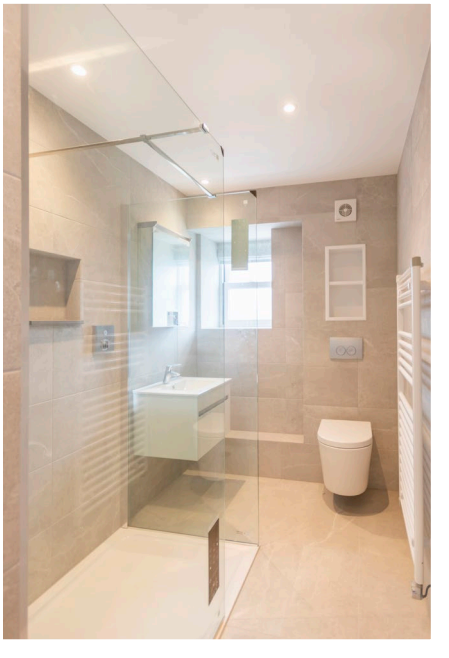


rentals@swoffers.co.uk

01481 721757

Estate House, Ann's Place, St Peter Port, Guernsey, Channel Islands, GY1 2NU





About The Lookout

In a central, yet surprisingly quiet location, this well appointed, recently renovated one bedroom apartment is just a short stroll from the heart of St Peter Port. "The Lookout" not only offers spacious, light and airy accommodation throughout, the apartment is fitted with high quality fixtures, fittings and appliances. With beautiful views of the castle and neighbouring islands "The Lookout" truly is a rarity on the rental market. Regret not suitable for pets. Plenty of on street parking available nearby and "out of hours parking" available between the hours of 6.00pm – 7.30am on week days and then at any time on the weekend. Available middle of August 2026 for a minimum term of one year. Deposit £1,850.

ACCOMMODATION COMPRISING

Entrance Hall

12'3" x 3'1" (3.73m x 0.94m)

Living Room

14' x 16' (4.27m x 4.88m)

Kitchen

11'1" x 5'2" (3.38m x 1.57m)

Bathroom

10'5" x 5'7" (3.18m x 1.7m)

Bedroom

14'8" x 12'8" (4.47m x 3.86m)

Appliances

Neff single electric oven, Neff four ring induction hob, Neff extractor fan, Neff dishwasher, Neff fridge/freezer and a Bosch washer/dryer.

Furnishings

Unfurnished but with appliances as listed and window coverings.

OUTSIDE

One allocated, secure storage unit with charging point for electric bikes.

Parking

Plenty of on street parking available nearby and "out of hours parking" available between the hours of 6.00pm – 7.30am on week days and then at any time on the weekend.

Term

One year minimum.

Services

Mains electricity, water and drainage. Electric heating. Underfloor heating in shower room and kitchen.

Available

Mid August 2026.

Deposit

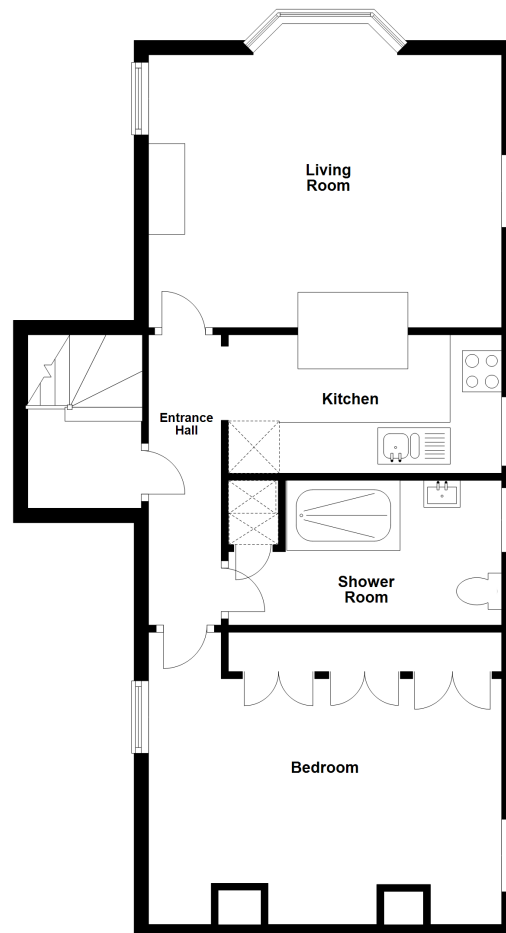
£1,850.

Rent

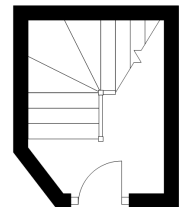
£1,850 per month.



First Floor



Ground Floor



swoffers



rentals@swoffers.co.uk

01481 721757

Estate House, Ann's Place, St Peter Port, Guernsey, Channel Islands, GY1 2NU

These particulars, whilst believed to be accurate are set out as a general outline only for guidance and do not constitute any part of an offer or contract. Sketch plans for illustrative purposes only. All measurements, walls, doors, windows, fittings and appliances, their sizes and locations are shown conventionally and are approximate only and cannot be regarded as being a representation either by the Vendor or their Agent, Swoffers Limited. Intending purchasers should not rely on them as statements or representations of fact or that the property or its services or any systems or equipment are in good condition, but must satisfy themselves by inspection or otherwise as to their accuracy and operative condition. Any reference to alterations to, or use of, any part of the property is not a statement that any necessary planning, building regulations or other consent has been obtained. These matters must be verified by any intending purchaser. No person in this firm's employment has the authority to make or give any representation or warranty in respect of the property.