

SOLE
AGENT



Apartment 4, 17 Mill Street

St. Peter Port, GY1 1HG

 x1  x1 PERRYS 5J9 TRP 69

- One-bedroom flat in central St Peter Port
- Large kitchen/living area
- Walking distance to shops and town centre
- Good on street parking nearby
- Ideal for first-time buyer or investors alike

£310,000

LOCAL MARKET

swoffers



sales@swoffers.co.uk

01481 711766

Estate House, Ann's Place, St Peter Port, Guernsey, Channel Islands, GY1 2NU





About Apartment 4, 17 Mill Street

Apartment 4, 17 Mill Street is a charming property tucked away in the heart of St Peter Port.

The layout includes a cosy living room, one bathroom, and a spacious kitchen, with stairs leading up to the bedroom. With local amenities and on-street parking available nearby, this characterful property could make an ideal first home or a smart investment opportunity.

ACCOMMODATION COMPRISING

Entrance Hall

5'11" x 2'11" (1.8m x 0.9m)
Fitted storage cupboard.

Shower Room

10' x 4'9" (3.05m x 1.45m)
Fitted with a three piece suite of shower, wash hand basin and W.C. Fully tiled.
Frosted window providing aspect to the side.

Living Room

16'1" x 11'4" (4.9m x 3.45m)
Two windows providing aspect to the front.

Kitchen / Dining Room

12'10" x 11'10" (3.9m x 3.6m)
Fitted with a range of wall and base units with worksurfaces over incorporating a sink with bowl and drainer. Window providing aspect to the side. Fitted storage cupboard. Large Velux window.

FIRST FLOOR

Landing

3'7" x 2'11" (1.1m x 0.9m)

Bedroom

19'8" x 10'10" (6m x 3.3m)
Fitted eaves storage. Two windows providing aspect to the front.

Appliances

Ignis hob and oven, extractor fan, Hotpoint washer/dryer, LEC freezer and Montpellier fridge.

TRP: 69

Viewing: BY APPOINTMENT

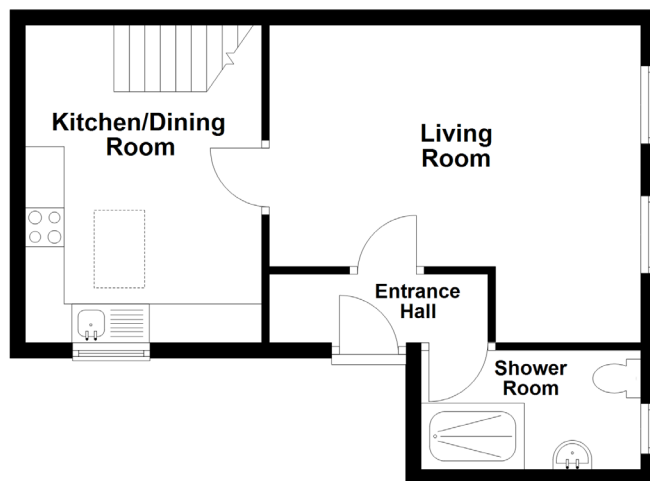
Possession: BY ARRANGEMENT

Services: Mains water, electricity and drainage. Electric heaters.

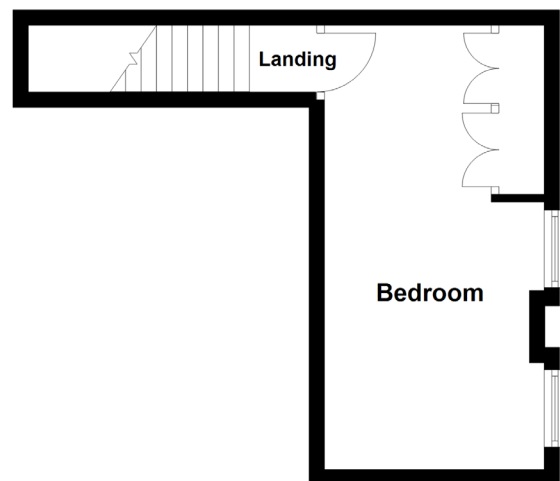
Construction: Granite construction. uPVC single and double glazed windows.

Price includes: Carpets, curtains, light fittings and appliances as listed.

Second Floor



Third Floor



swoffers



sales@swoffers.co.uk

01481 711766

Estate House, Ann's Place, St Peter Port, Guernsey, Channel Islands, GY1 2NU

These particulars, whilst believed to be accurate are set out as a general outline only for guidance and do not constitute any part of an offer or contract. Sketch plans for illustrative purposes only. All measurements, walls, doors, windows, fittings and appliances, their sizes and locations are shown conventionally and are approximate only and cannot be regarded as being a representation either by the Vendor or their Agent, Swoffers Limited. Intending purchasers should not rely on them as statements or representations of fact or that the property or its services or any systems or equipment are in good condition, but must satisfy themselves by inspection or otherwise as to their accuracy and operative condition. Any reference to alterations to, or use of, any part of the property is not a statement that any necessary planning, building regulations or other consent has been obtained. These matters must be verified by any intending purchaser. No person in this firm's employment has the authority to make or give any representation or warranty in respect of the property.