

Arch Druides  
Jerbourg Point  
St Martin  
Guernsey  
GY4 6GB



This drawing is for illustration purposes only © Copyright Peter Huf



This drawing is for illustration purposes only © Copyright Peter Huf



This drawing is for illustration purposes only © Copyright Peter Huf



This drawing is for illustration purposes only © Copyright Peter Huf



This drawing is for illustration purposes only © Copyright Peter Huf



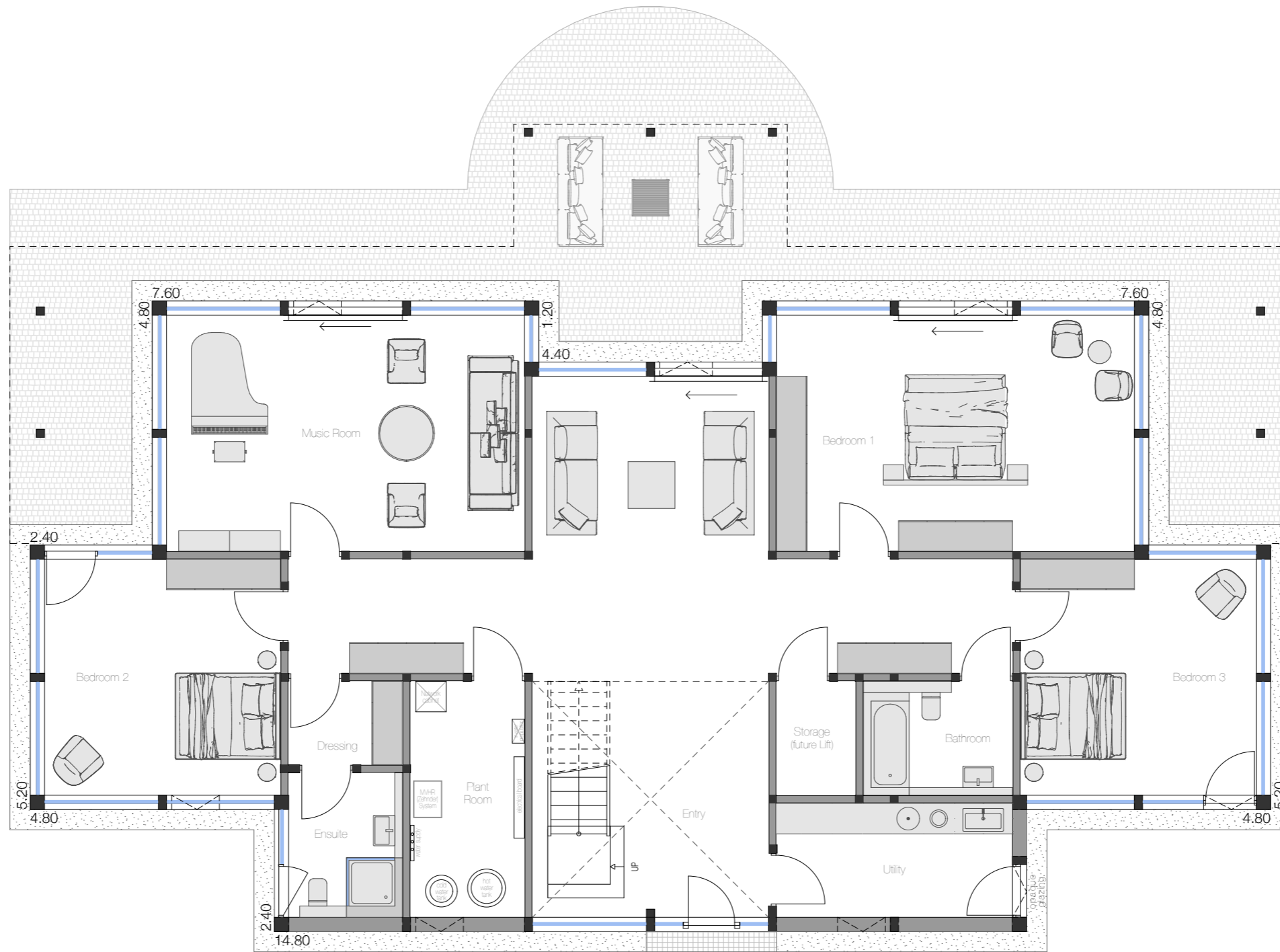
This drawing is for illustration purposes only © Copyright Peter Huf



This drawing is for illustration purposes only © Copyright Peter Huf



This drawing is for illustration purposes only © Copyright Peter Huf



**Proposed House GEA**

(Gross External Area) :

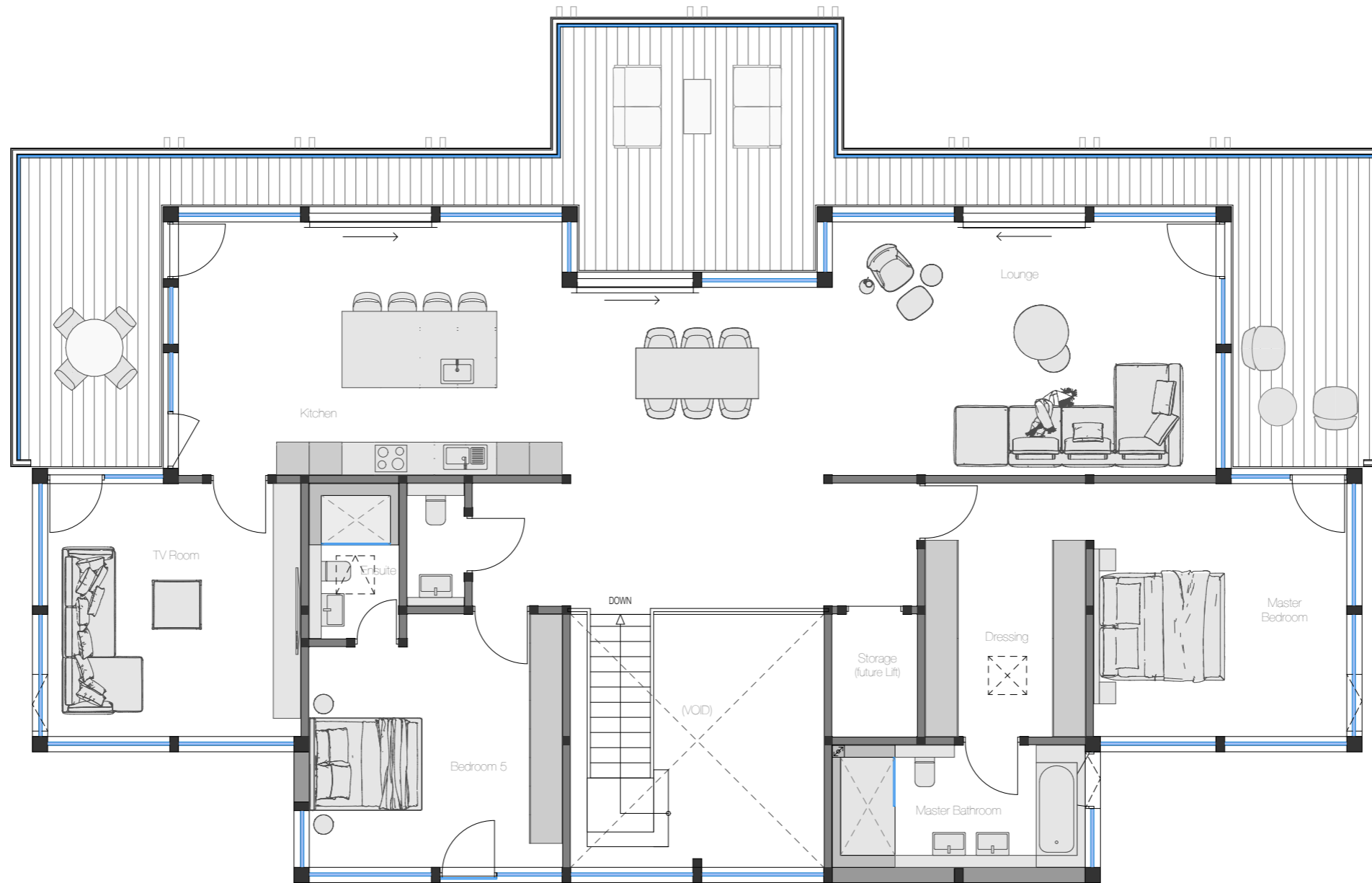
Ground Floor	251.20 m <sup>2</sup>
First Floor	251.20 m <sup>2</sup>
<b>Total</b>	<b>502.40 m<sup>2</sup></b>
Covered Areas	43.48 m <sup>2</sup>
Garage	128.30 m <sup>2</sup>

This drawing is for illustration purposes only © Copyright Peter Huf



**Ground Floor**  
1:100@A3





**Proposed House GEA**

(Gross External Area) :

Ground Floor	251.20 m <sup>2</sup>
First Floor	251.20 m <sup>2</sup>
<b>Total</b>	<b>502.40 m<sup>2</sup></b>
Covered Areas	43.48 m <sup>2</sup>
Garage	128.30 m <sup>2</sup>

This drawing is for illustration purposes only © Copyright Peter Huf

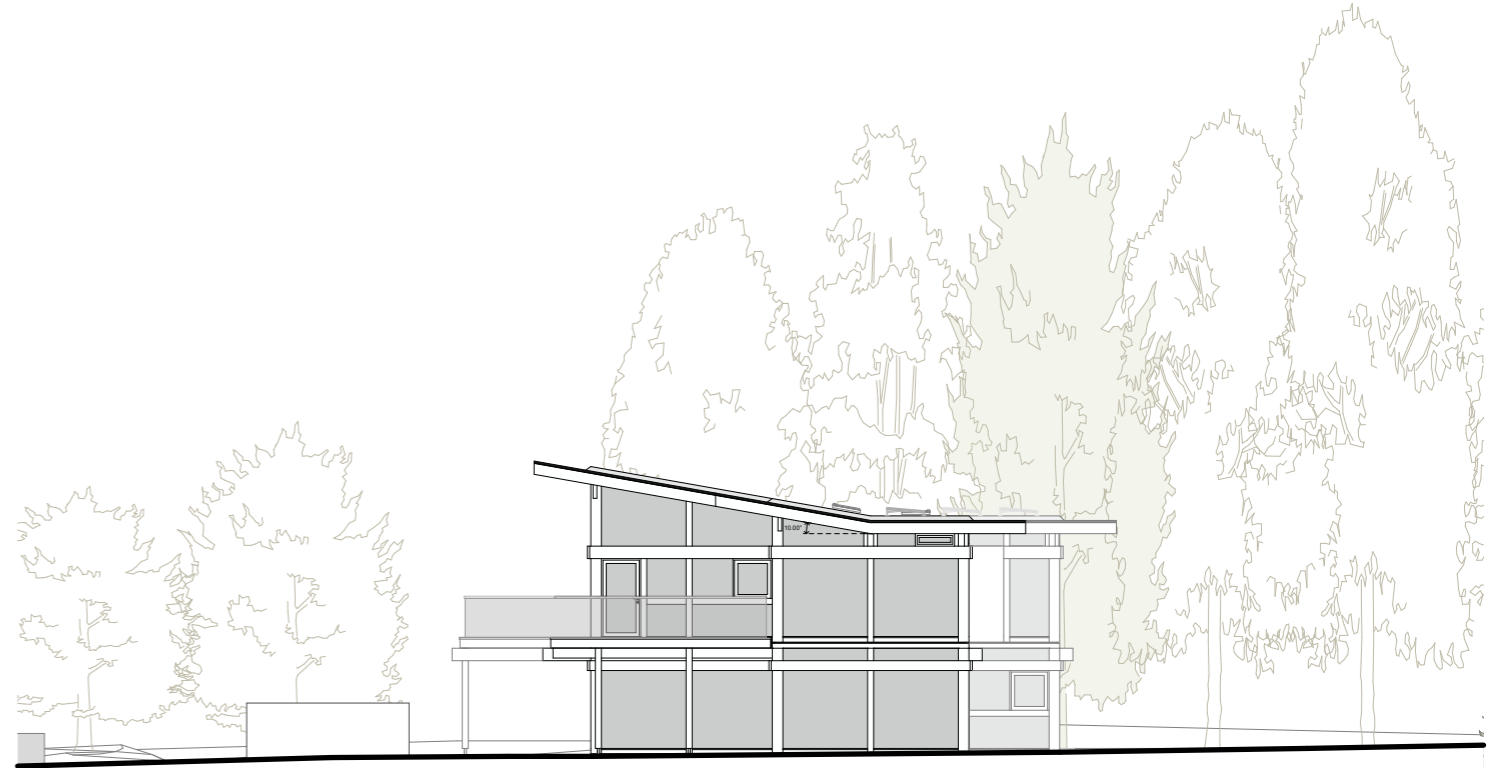


**First Floor**  
1:100@A3

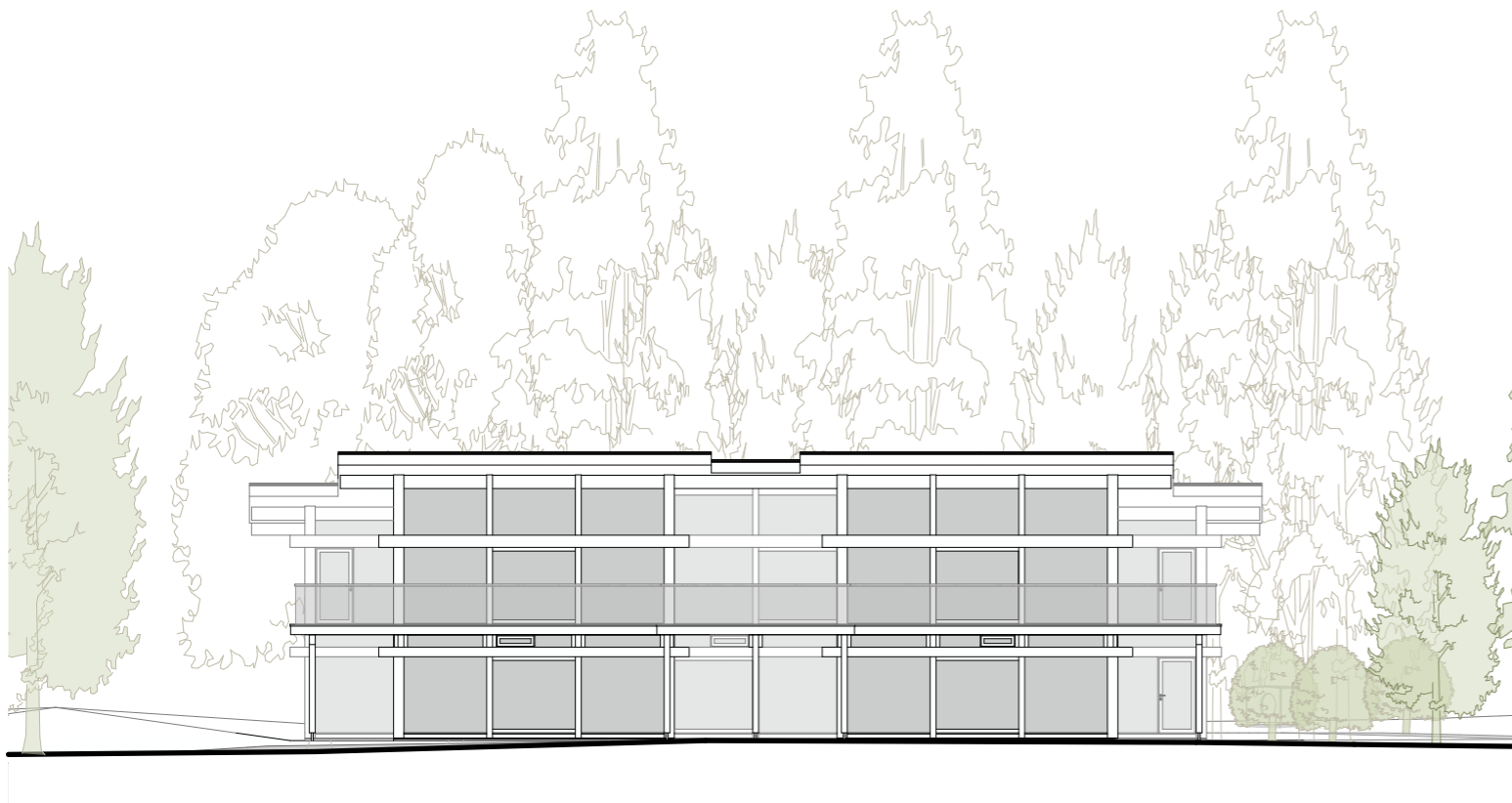




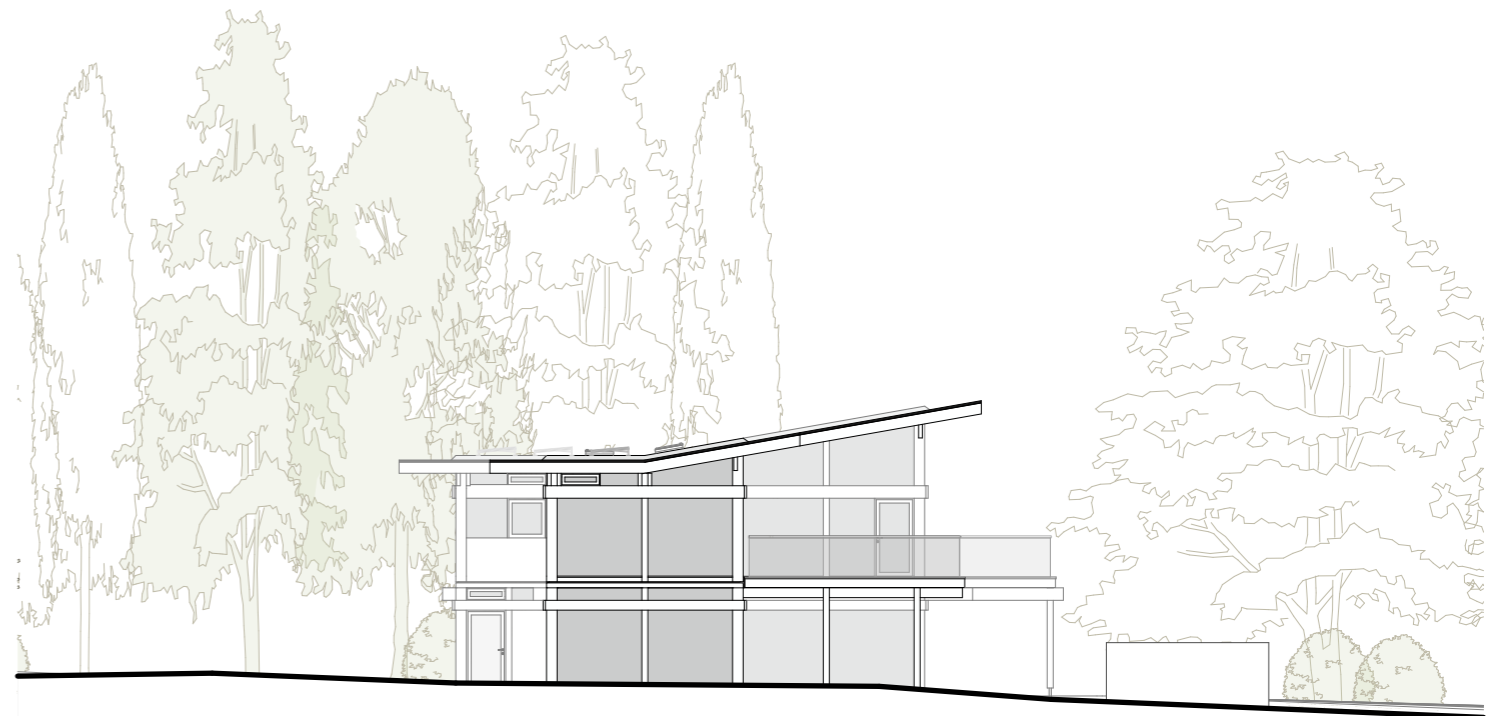
Front NE Elevation



Side SE Elevation



Rear SW Elevation



Side NW Elevation

This drawing is for illustration purposes only © Copyright Peter Huf



This drawing is for illustration purposes only © Copyright Peter Huf



This drawing is for illustration purposes only © Copyright Peter Huf



This drawing is for illustration purposes only © Copyright Peter Huf



This drawing is for illustration purposes only © Copyright Peter Huf



This drawing is for illustration purposes only © Copyright Peter Huf