



La Murette

Guernsey









La Marette

POA



Experience the pinnacle of luxury living with this exquisite Georgian-style villa, commanding a prestigious clifftop position, and offering breathtaking sea views, unparalleled privacy, and an exceptional sense of space.

Impeccably designed in a striking maximalist style, the property boasts a grand entrance hall with an imperial staircase and an opulent chandelier, setting the tone for its refined elegance. Spanning an impressive 10,000 square feet, the residence features six beautifully appointed bedrooms and six bathrooms, providing generous accommodation for both family and guests.

Designed for seamless indoor-outdoor living, the rear of the house opens onto an expansive alfresco entertaining area with a South West aspect which is perfect for enjoying summer afternoons and Sunsets .Set within over four acres of pristine grounds, this rare offering includes a natural swimming pool, a sauna, and an outside William Holland tin spa bath, creating a private sanctuary for relaxation.

Additional highlights include a separate guest suite within a detached outbuilding (with full planning permission for further expansion), garaging for four vehicles, ample parking, and landscaped gardens.

This is a truly rare opportunity to acquire an extraordinary Clifftop estate in one of the most idyllic positions in Guernsey . Situated only a few minutes cliff walk to the most beautiful swimming coves and quiet unspoilt beaches .

Viewing is essential to fully appreciate all this exceptional property has to offer.















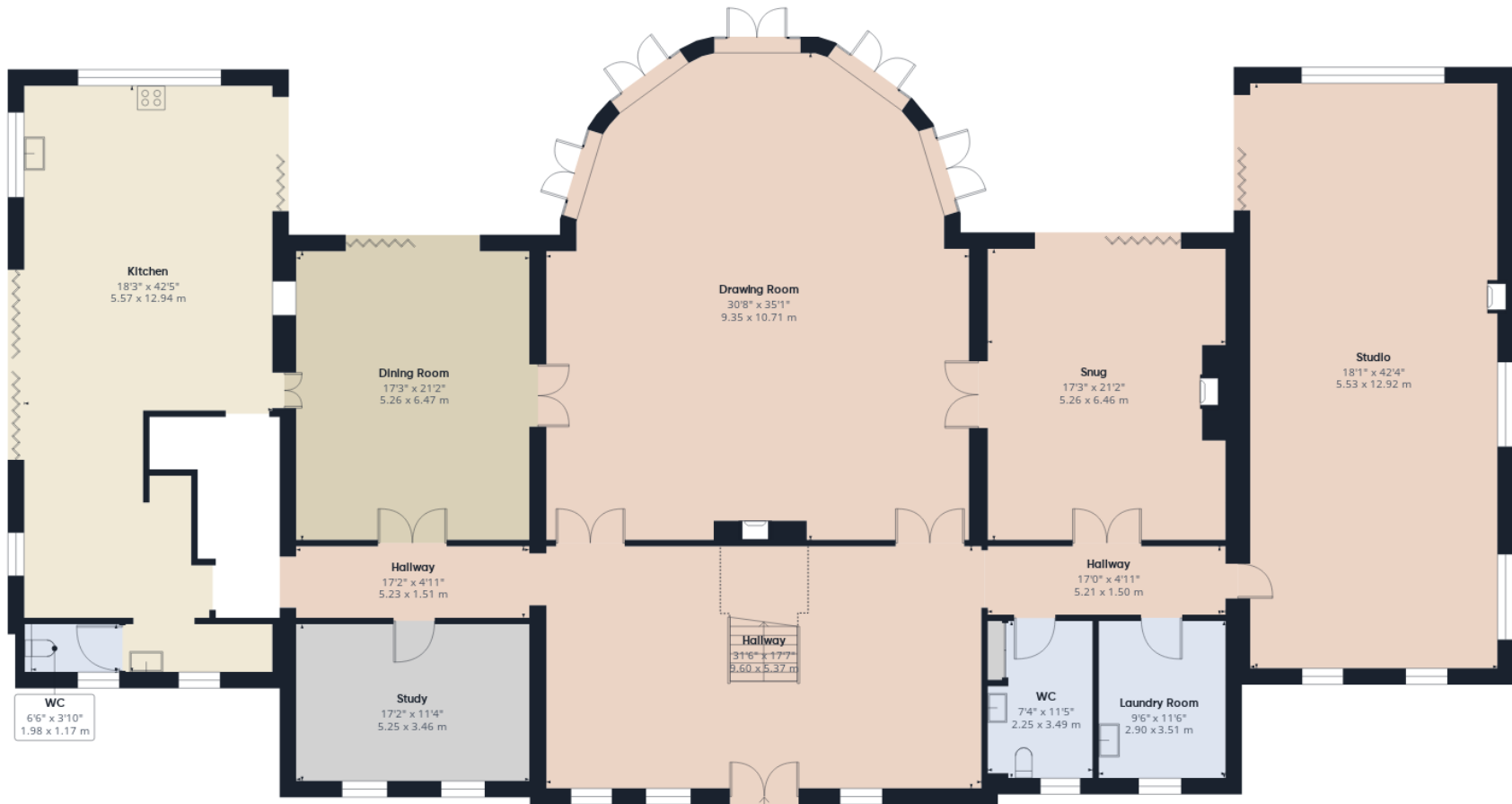




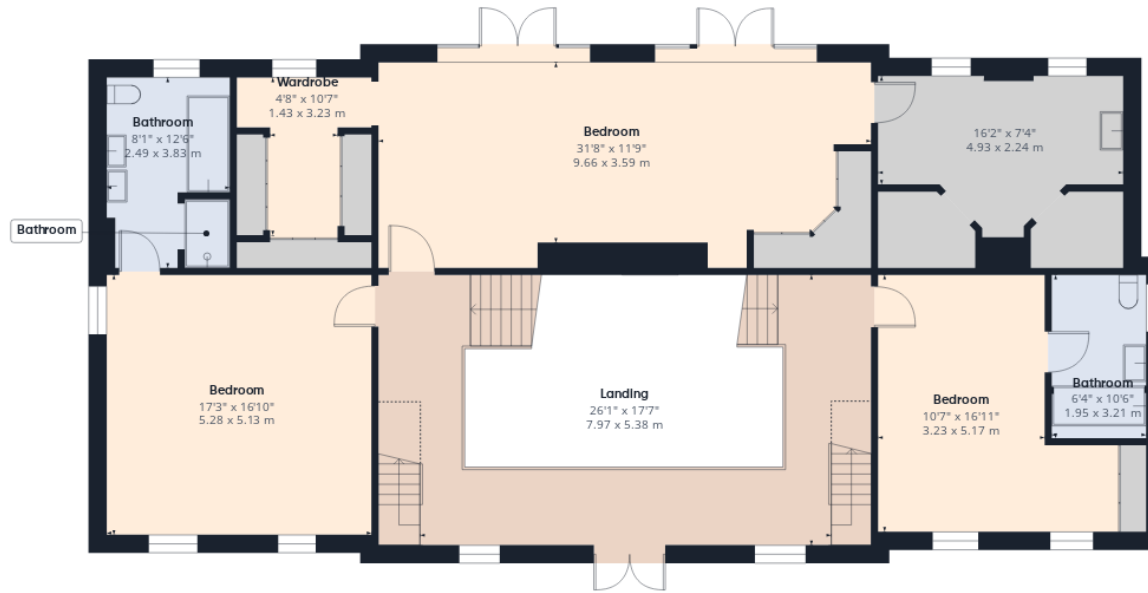




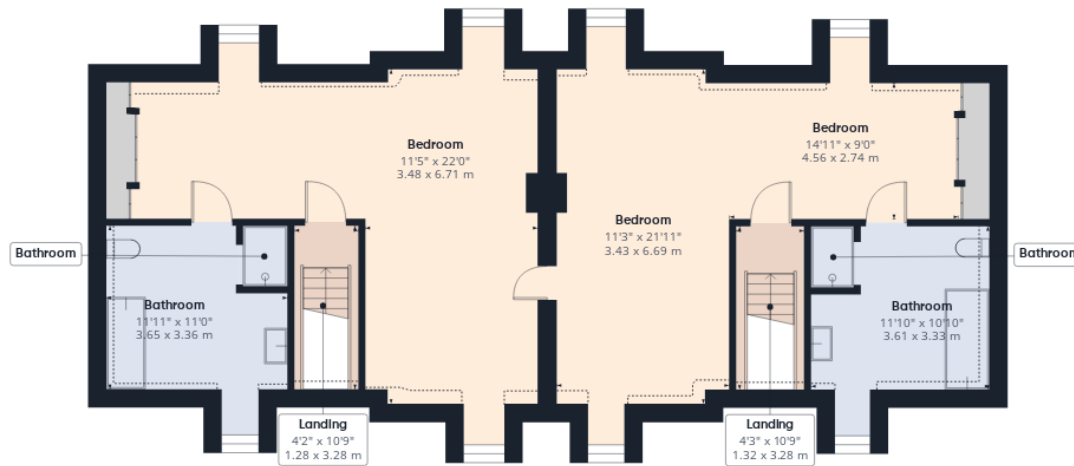




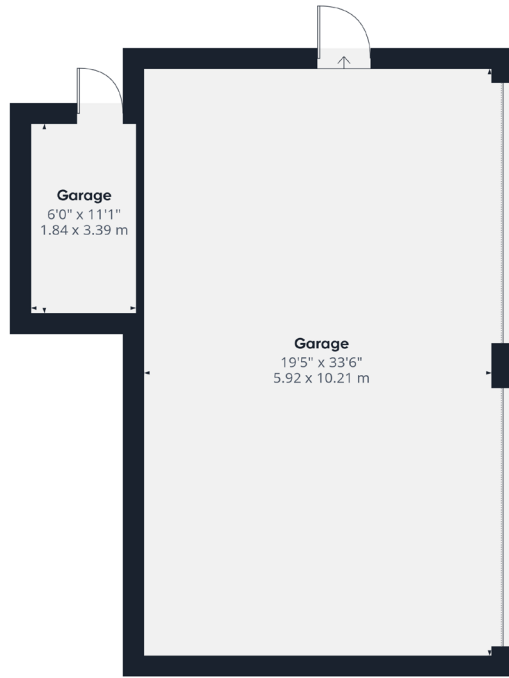
Ground Floor



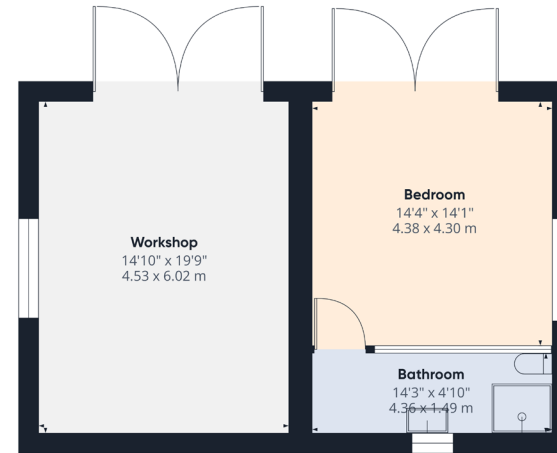
First Floor



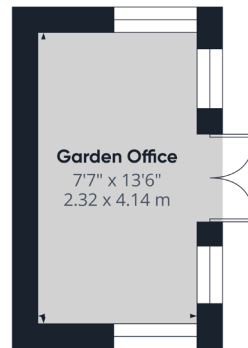
Second Floor



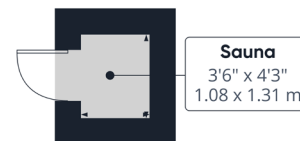
Car Garage



Garden Garage



Garden Office



Sauna



swoffers

The key to Guernsey property

+44 (0) 1481 711766

www.swoffers.co.uk

These particulars, whilst believed to be accurate are set out as a general outline only for guidance and do not constitute any part of an offer or contract. Sketch plans for illustrative purposes only. All measurements, walls, doors, windows, fittings and appliances, their sizes and locations are shown conventionally and are approximate only and cannot be regarded as being a representation either by the Vendor or their Agent, Swoffers Limited. Intending purchasers should not rely on them as statements or representations of fact or that the property or its services or any systems or equipment are in good condition, but must satisfy themselves by inspection or otherwise as to their accuracy and operative condition. Any reference to alterations to, or use of, any part of the property is not a statement that any necessary planning, building regulations or other consent has been obtained. These matters must be verified by any intending purchaser. No person in this firm's employment has the authority to make or give any representation or warranty in respect of the property.