

## Flat 3, 4 Choisi Terrace

Les Gravees, St. Peter Port, GY1 1RP

 x2  x2 **PERRYS 17E5 TRP 130**

- Contemporary apartment in St Peter Port
- Walking distance to town centre
- Two double bedrooms and two bath/shower rooms
- Open plan kitchen/dining/living space
- Parking for one car
- Part furnished as seen
- Available immediately
- £2,200 deposit

**£2,000pm**

**RENTAL - LOCAL MARKET**

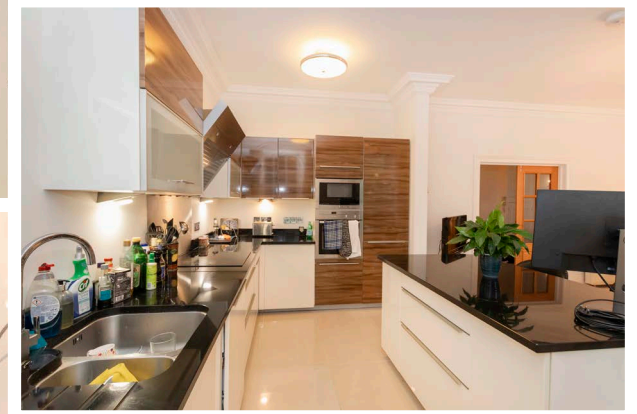
**swoffers**

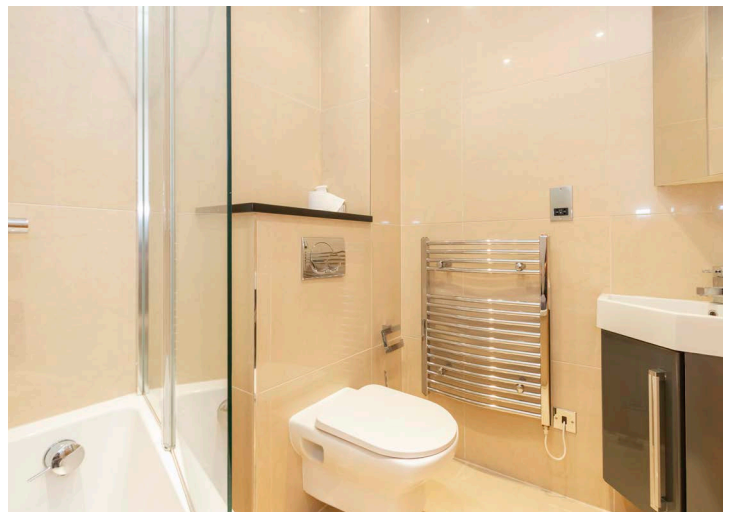
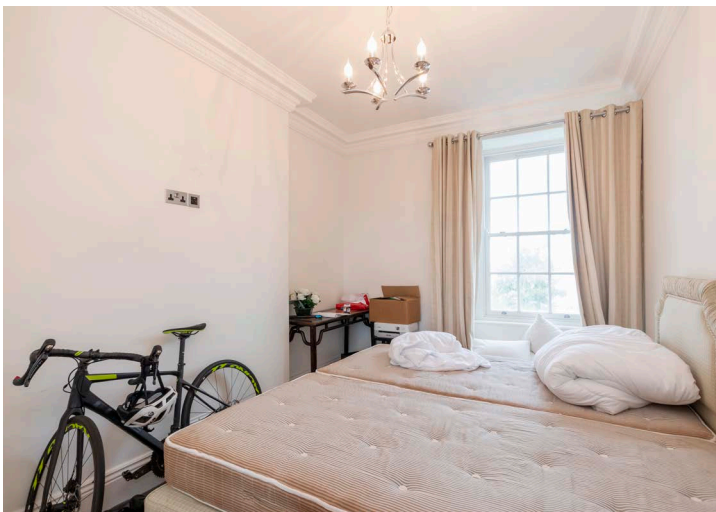


[rentals@swoffers.co.uk](mailto:rentals@swoffers.co.uk)

**01481 721757**

Estate House, Ann's Place, St Peter Port, Guernsey, Channel Islands, GY1 2NU





## About Flat 3, 4 Choisi Terrace

Apartment 3, 4 Choisi is a bright and spacious first floor apartment located in a highly convenient location in central St. Peter Port. Well appointed and with a contemporary finish throughout, this property offers two double bedrooms with two bath/shower rooms and an open plan kitchen/dining/living room. To the front of the property is an allocated parking space. Available immediately for a one year term. Suitable for a professional couple, regret no pets. Furnished as seen, viewings in person highly recommended. £2,200 deposit.

### ACCOMMODATION COMPRISING

#### FIRST FLOOR

##### Entrance Hall

18'3" x 6'10" (5.56m x 2.08m)

##### Kitchen/Living/Dining Room

22'2" x 15'4" (6.76m x 4.67m)

##### Master Bedroom

14'4" x 12' (4.37m x 3.66m)

##### Dressing Room

8'11" x 3'3" (2.72m x 1m)

Range of fitted wardrobes.

##### Ensuite Bathroom

5'10" x 9'8" (1.78m x 2.95m)

##### Family Bathroom

5'5" x 7' (1.65m x 2.13m)

##### Bedroom 2

15'5" x 8'10" (4.7m x 2.7m)

Fitted wardrobe.

#### Appliances

Indesit fridge/freezer, Neff oven, Neff microwave, Neff hob, Neff extractor, Indesit dishwasher and a Hotpoint washing machine.

#### Furnishings

Part furnished as seen with appliances as listed, viewings recommended.

#### OUTSIDE

##### Front

Allocated parking for one car.

##### Term

One year minimum.

##### Services

Mains electric, water and drainage.

##### Available

Immediately by negotiation.

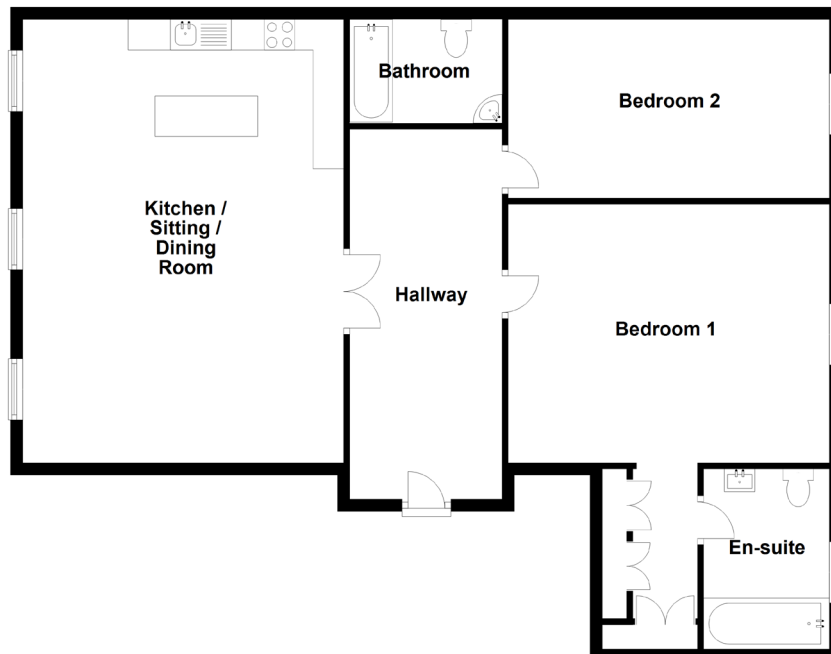
##### Rent

£2,200 per month.

##### Deposit

£2,200 minimum.

Ground Floor



**swoffers**



[rentals@swoffers.co.uk](mailto:rentals@swoffers.co.uk)

01481 721757

Estate House, Ann's Place, St Peter Port, Guernsey, Channel Islands, GY1 2NU

These particulars, whilst believed to be accurate are set out as a general outline only for guidance and do not constitute any part of an offer or contract. Sketch plans for illustrative purposes only. All measurements, walls, doors, windows, fittings and appliances, their sizes and locations are shown conventionally and are approximate only and cannot be regarded as being a representation either by the Vendor or their Agent, Swoffers Limited. Intending purchasers should not rely on them as statements or representations of fact or that the property or its services or any systems or equipment are in good condition, but must satisfy themselves by inspection or otherwise as to their accuracy and operative condition. Any reference to alterations to, or use of, any part of the property is not a statement that any necessary planning, building regulations or other consent has been obtained. These matters must be verified by any intending purchaser. No person in this firm's employment has the authority to make or give any representation or warranty in respect of the property.