



2 Mount Hermon Apartments

Mount Hermon, St. Peter Port, GY1 1JD

 x1  x1 **PERRYS 4F8 TRP TBC**

- Brand new apartment
- Convenient town location
- One bedroom
- Open plan living
- Sunny balcony
- On street parking

£415,000

LOCAL MARKET

swoffers



sales@swoffers.co.uk

01481 711766

Estate House, Ann's Place, St Peter Port, Guernsey, Channel Islands, GY1 2NU





About 2 Mount Hermon Apartments

Apartment 2, Mount Hermon is an immaculate, purpose-built brand new apartment offering stylish, low-maintenance living in a convenient location close to St Peter Port.

The apartment comprises a bright open-plan kitchen/lounge/dining room with bi-fold doors opening onto a delightful sunny balcony enjoying lovely views over St Peter Port. There is also a double bedroom, contemporary bathroom, entrance hall and useful storage cupboard.

A fantastic opportunity to acquire a brand new apartment, ideal for first-time buyers, investors, or those looking to downsize and enjoy easy, low-maintenance living, with on-street parking available nearby including rented options nearby.

ACCOMMODATION COMPRISING

Entrance Hall

20'8" x 4'7" (6.3m x 1.4m)

Window providing aspect to the front.

Bathroom

8'2" x 7'3" (2.5m x 2.2m)

Fitted with a three piece suite of bath, wash hand basin with storage below and W.C. Frosted window to the front.

Bedroom

12'10" x 11'6" (3.9m x 3.5m)

Two frosted windows to the side.

Kitchen / Lounge / Dining Room

18'1" x 14'11" (5.5m x 4.55m)

Fitted with a range of wall and base units with wood effect worksurfaces over incorporating a sink with bowl and drainer. Understairs storage and additional cupboard housing the water cylinder. Bi-fold doors providing access to a balcony.

OUTSIDE

Front

The property is approached by a communal entrance hall.

Rear

Small sunny balcony.

Appliances

Siemens oven, Siemens fridge/freezer, Siemens hob, Siemens extractor fan, Siemens washer/dryer and Siemens dishwasher.

TRP: TBC

Viewing: BY APPOINTMENT

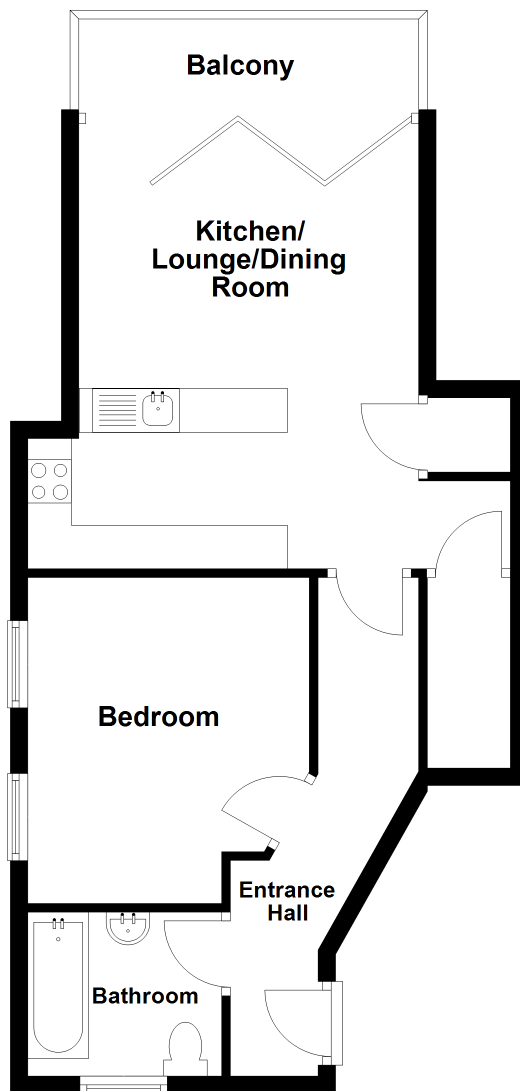
Possession: BY ARRANGEMENT

Services: Mains water, electricity and drainage.

Construction: Cavity construction.

Price includes: Carpets, curtains, light fittings and appliances as listed

Ground Floor



swoffers



sales@swoffers.co.uk

01481 711766

Estate House, Ann's Place, St Peter Port, Guernsey, Channel Islands, GY1 2NU

These particulars, whilst believed to be accurate are set out as a general outline only for guidance and do not constitute any part of an offer or contract. Sketch plans for illustrative purposes only. All measurements, walls, doors, windows, fittings and appliances, their sizes and locations are shown conventionally and are approximate only and cannot be regarded as being a representation either by the Vendor or their Agent, Swoffers Limited. Intending purchasers should not rely on them as statements or representations of fact or that the property or its services or any systems or equipment are in good condition, but must satisfy themselves by inspection or otherwise as to their accuracy and operative condition. Any reference to alterations to, or use of, any part of the property is not a statement that any necessary planning, building regulations or other consent has been obtained. These matters must be verified by any intending purchaser. No person in this firm's employment has the authority to make or give any representation or warranty in respect of the property.