



4, 15 Allez Street

St. Peter Port, GY1 1NG

 x1  x1 **PERRYS 5H8 TRP 71**

- Low-maintenance apartment
- Central St Peter Port location
- Close to amenities
- Practical modern living space
- Communal gardens
- On street parking nearby

£295,000

LOCAL MARKET

swoffers



sales@swoffers.co.uk

01481 711766

Estate House, Ann's Place, St Peter Port, Guernsey, Channel Islands, GY1 2NU





About 4, 15 Allez Street

Flat 4, 15 Allez Street is a low-maintenance apartment located in the centre of St Peter Port. The property offers practical living space, featuring a spacious kitchen, a separate lounge, and one bedroom. The property also includes a modern bathroom.

The property benefits from access to a communal garden, while on-street parking is available nearby. With bus routes close at hand and the town centre's amenities within easy reach, this property is considered suitable as either an investment purchase or for those seeking central town living.

ACCOMMODATION COMPRISING

Entrance Hall

20' (6.1) x 11'2" (3.4) (max) x 2'11" (0.9) (min)

Kitchen

9'2" x 8'6" (2.8m x 2.6m)

Fitted with a range of wall and base units with worksurfaces over incorporating a sink and drainer with mixer tap.

Bedroom 1

12'10" x 9'10" (3.9m x 3m)

Window providing access over the communal gardens. Fitted wardrobes.

Shower Room

13'1" x 4'7" (4m x 1.4m)

Fitted with a three piece suite of shower, wash hand basin with storage below and W.C. Fitted storage with access to the loft.

Lounge

16'1" x 10'10" (4.9m x 3.3m)

Two windows providing aspect over the communal gardens.

Appliances

Electrolux four ring hob, Electrolux oven, extractor fan, Beko fridge/freezer and Montpellier washer/dryer.

TRP: 71

Viewing: BY APPOINTMENT

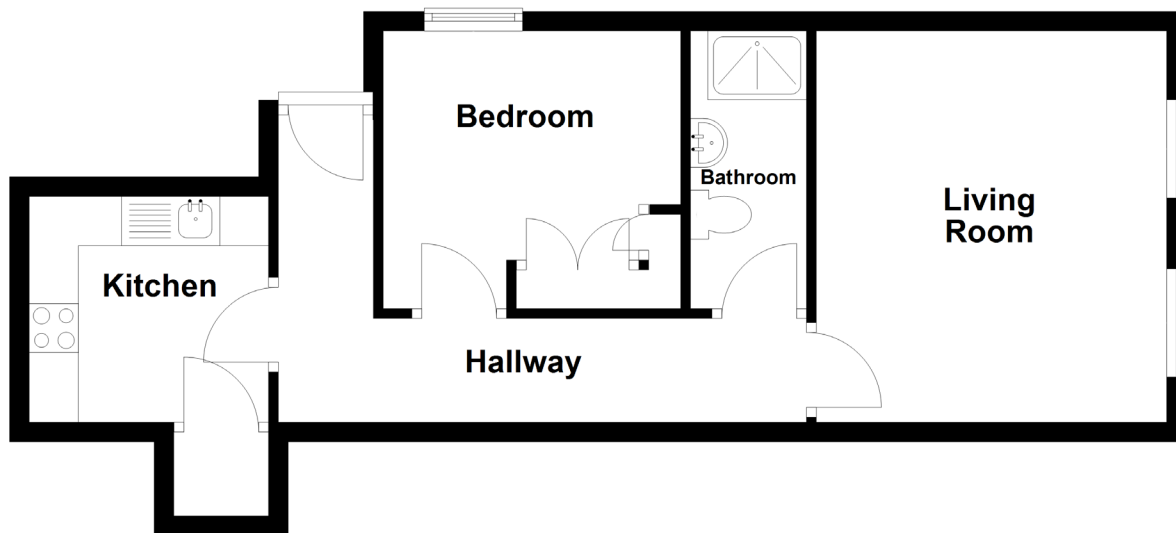
Possession: BY ARRANGEMENT

Services: Mains water, electricity and drainage. Electric central heating.

Construction: Granite & block construction. uPVC double glazed windows and uPVC fascias and soffits.

Price includes: Carpets, curtains, light fittings and appliances as listed.

Ground Floor



swoffers



sales@swoffers.co.uk

01481 711766

Estate House, Ann's Place, St Peter Port, Guernsey, Channel Islands, GY1 2NU

These particulars, whilst believed to be accurate are set out as a general outline only for guidance and do not constitute any part of an offer or contract. Sketch plans for illustrative purposes only. All measurements, walls, doors, windows, fittings and appliances, their sizes and locations are shown conventionally and are approximate only and cannot be regarded as being a representation either by the Vendor or their Agent, Swoffers Limited. Intending purchasers should not rely on them as statements or representations of fact or that the property or its services or any systems or equipment are in good condition, but must satisfy themselves by inspection or otherwise as to their accuracy and operative condition. Any reference to alterations to, or use of, any part of the property is not a statement that any necessary planning, building regulations or other consent has been obtained. These matters must be verified by any intending purchaser. No person in this firm's employment has the authority to make or give any representation or warranty in respect of the property.