

SOLE
AGENT



Flat 1 Bienche Maison

Les Gravees Du Sud, St Peter Port, GY1 1RL

 x1  x1 PERRYS 4E7 TRP 65

- Spacious one-bedroom apartment
- Private enclosed garden
- Situated on the outskirts of town
- On-street parking nearby
- Separate kitchen and living room
- Ideal for investors or first-time buyers

£280,000

LOCAL MARKET

swoffers



sales@swoffers.co.uk

01481 711766

Estate House, Ann's Place, St Peter Port, Guernsey, Channel Islands, GY1 2NU





About Flat 1 Bienche Maison

Flat 1, Bienche Maison is a spacious one-bedroom apartment situated on the outskirts of town. The property comprises a large double bedroom, a kitchen, a shower room, and a separate sitting room.

The property also benefits from an enclosed garden, with on-street parking available nearby.

ACCOMMODATION COMPRISING

Entrance Porch

9'6" x 6'3" (2.9m x 1.9m)

Fitted storage.

Entrance Hall

6'7" (2) (max) x 2'7" (0.79) (min) x 15'5" (4.7)

Lounge

13'9" x 10'10" (4.2m x 3.3m)

Two windows providing aspect to the front and side of the property.

Kitchen

8'6" x 8'2" (2.6m x 2.5m)

Fitted with a range of wall and base units with worksurfaces over. Window providing aspect to the side of the property.

Shower Room

7'10" x 4'11" (2.4m x 1.5m)

Fitted with a three piece suite of shower, wash hand basin with mixer tap, storage below and W.C. Window providing aspect to the side of the property.

Bedroom

10'10" x 10'10" (3.3m x 3.3m)

Fitted wardrobes. Window providing aspect to the rear of the property.

OUTSIDE

Rear

Private garden with decking, gravel and a shed.

Appliances

Belling oven, Bosch microwave, Hotpoint fridge, Belling hob, Lec mini freezer, Lec freezer and Indesit tumble dryer.

TRP: 65

Viewing: BY APPOINTMENT

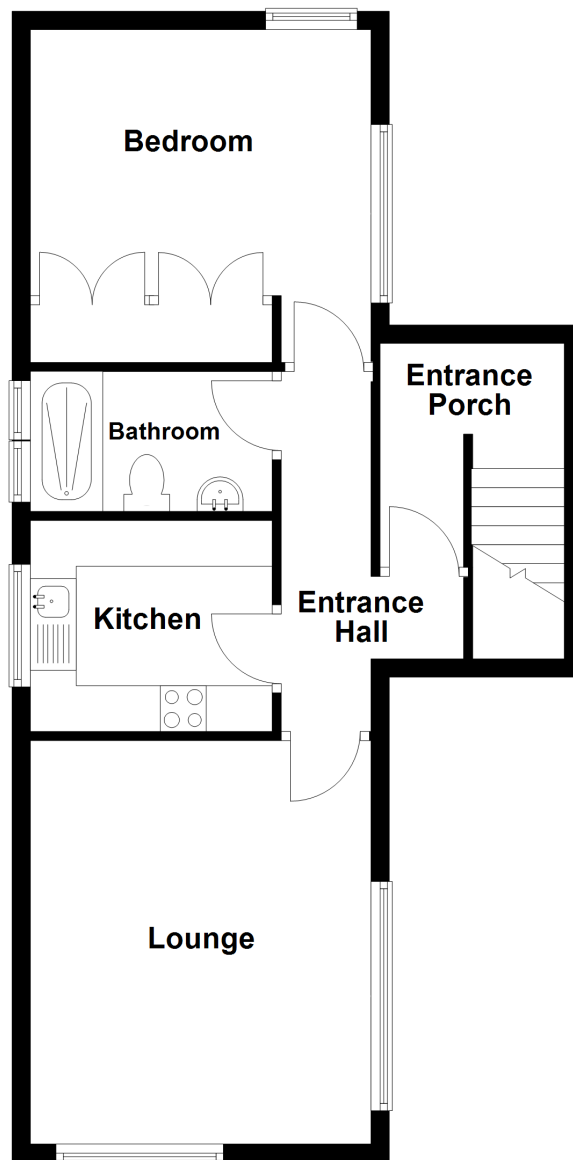
Possession: BY ARRANGEMENT

Services: Mains water, electricity and drainage. Gas central heating and electric radiators.

Construction: Cavity construction. uPVC double glazed windows and uPVC fascias and soffits.

Price includes: Carpets, curtains, light fittings and appliances as listed.

Ground Floor



swoffers



sales@swoffers.co.uk

01481 711766

Estate House, Ann's Place, St Peter Port, Guernsey, Channel Islands, GY1 2NU

These particulars, whilst believed to be accurate are set out as a general outline only for guidance and do not constitute any part of an offer or contract. Sketch plans for illustrative purposes only. All measurements, walls, doors, windows, fittings and appliances, their sizes and locations are shown conventionally and are approximate only and cannot be regarded as being a representation either by the Vendor or their Agent, Swoffers Limited. Intending purchasers should not rely on them as statements or representations of fact or that the property or its services or any systems or equipment are in good condition, but must satisfy themselves by inspection or otherwise as to their accuracy and operative condition. Any reference to alterations to, or use of, any part of the property is not a statement that any necessary planning, building regulations or other consent has been obtained. These matters must be verified by any intending purchaser. No person in this firm's employment has the authority to make or give any representation or warranty in respect of the property.