

SOLE
AGENT



Flat 1, 15 Allez Street

St. Peter Port, Guernsey, GY1 1NG

 x1  x1 PERRYS 5 H8 TRP 39

- Studio apartment in the centre of St Peter Port
- Practical living space with three piece bathroom
- Separate kitchen
- Communal garden
- On street parking available nearby
- Tenant in situ until November 2026
- Suitable as an investment purchase, sold as an ongoing concern

£210,000

LOCAL MARKET

swoffers



sales@swoffers.co.uk

01481 711766

Estate House, Ann's Place, St Peter Port, Guernsey, Channel Islands, GY1 2NU



About Flat 1, 15 Allez Street

Flat 1, 15 Allez Street is a studio apartment located in the centre of St Peter Port. The property offers a practical living space, a three-piece bathroom, and the benefit of a separate kitchen. The property benefits from access to a communal garden, while on-street parking is available nearby. With bus routes close at hand and the town centre's amenities within easy reach, the apartment is conveniently positioned. With a tenant in situ until November 2026, this property is considered suitable as an investment purchase, appealing to those seeking proximity to central St Peter Port.

ACCOMMODATION COMPRISING

Entrance Hall

7'1" x 4'1" (2.16m x 1.24m)

Bathroom

7'8" x 5'11" (2.34m x 1.8m)

Fitted with a three piece suite of bath with shower over, pedestal wash hand basin and W.C.

Bedroom

10'11" x 10'6" (3.33m x 3.2m)

Kitchen

12'5" x 7'8" (3.78m x 2.34m)

Fitted with a range of white wall and base units with granite effect work surface over incorporating a single bowl stainless steel sink.

OUTSIDE

The property is approached from the front via a communal stairway into the communal hallway with access into this property. There is a communal garden area which is laid to gravel.

Appliances

Integrated Electrolux oven, Electrolux hob, extractor fan, freestanding Hotpoint washer/dryer, integrated fridge/freezer.

TRP: 39

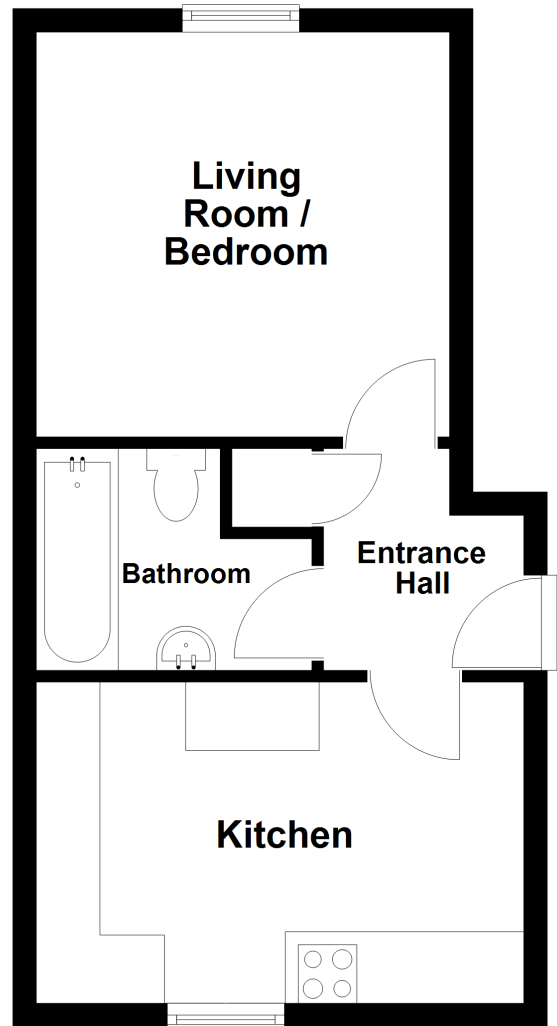
Viewing: BY APPOINTMENT

Possession: BY ARRANGEMENT

Services: All mains. Full electric night storage heating.

Construction: Granite and block. uPVC double glazed windows. uPVC fascias and soffits.

Price includes: Carpets, curtains, light fittings and appliances as listed.



swoffers



sales@swoffers.co.uk

01481 711766

Estate House, Ann's Place, St Peter Port, Guernsey, Channel Islands, GY1 2NU

These particulars, whilst believed to be accurate are set out as a general outline only for guidance and do not constitute any part of an offer or contract. Sketch plans for illustrative purposes only. All measurements, walls, doors, windows, fittings and appliances, their sizes and locations are shown conventionally and are approximate only and cannot be regarded as being a representation either by the Vendor or their Agent, Swoffers Limited. Intending purchasers should not rely on them as statements or representations of fact or that the property or its services or any systems or equipment are in good condition, but must satisfy themselves by inspection or otherwise as to their accuracy and operative condition. Any reference to alterations to, or use of, any part of the property is not a statement that any necessary planning, building regulations or other consent has been obtained. These matters must be verified by any intending purchaser. No person in this firm's employment has the authority to make or give any representation or warranty in respect of the property.