

SOLE
AGENT



Laurent Perrier, Eversley

6 Victoria Terrace, Les Petites Fontaines, St. Peter Port, GY1 1JA

 x1  x1 **PERRYS 5 H9 TRP 57**

- One bedroom basement flat
- Beautifully presented
- Convenient town location
- Close to amenities
- Newly renovated throughout

£295,000

LOCAL MARKET

swoffers



sales@swoffers.co.uk

01481 711766

Estate House, Ann's Place, St Peter Port, Guernsey, Channel Islands, GY1 2NU





About Laurent Perrier, Eversley

Laurent Perrier is an immaculately presented basement flat in a convenient St Peter Port location. The accommodation comprises a living room, kitchen, bedroom, and bathroom, and is tastefully decorated throughout. The property benefits from having no communal charges, is low maintenance with low ongoing costs, and pets are permitted. This apartment would be ideal for first-time buyers and investors alike.

ACCOMMODATION COMPRISING

Lounge

14'9" x 11'6" (4.5m x 3.5m)

Fireplace with wooden surround and marble effect hearth.

Kitchen

16'1" x 5'11" (4.9m x 1.8m)

Fitted with a range of wall and base units with wood effect work surfaces over incorporating 1½ bowl sink and drainer.

Shower Room

5'1" x 4'11" (1.55m x 1.5m)

Fitted with a three piece suite of shower with dual shower heads, wash hand basin with storage below and W.C. storage cupboard.

Bedroom

14'1" x 9' (4.3m x 2.74m)

OUTSIDE

Front

Steps lead down to the front door.

Appliances

Bosch hob, extractor fan, Bosch oven, integrated fridge/freezer, dishwasher.

TRP: 57

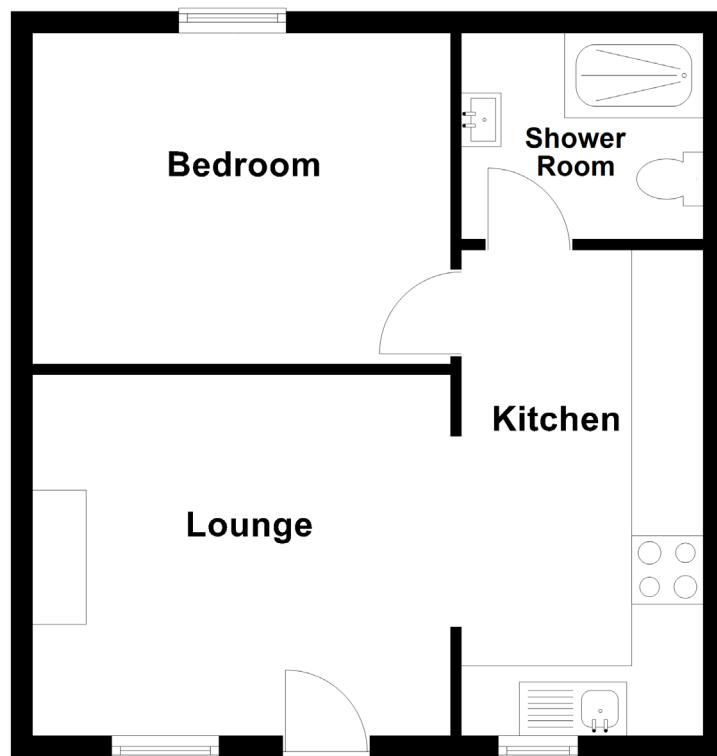
Viewing: BY APPOINTMENT

Possession: BY ARRANGEMENT

Services: All mains services. Electric heating.

Construction: uPVC double glazed windows. uPVC fascias and soffits.

Price includes: Carpets, curtains, light fittings and appliances as listed.



swoffers



sales@swoffers.co.uk | 01481 711766

Estate House, Ann's Place, St Peter Port, Guernsey, Channel Islands, GY1 2NU

These particulars, whilst believed to be accurate are set out as a general outline only for guidance and do not constitute any part of an offer or contract. Sketch plans for illustrative purposes only. All measurements, walls, doors, windows, fittings and appliances, their sizes and locations are shown conventionally and are approximate only and cannot be regarded as being a representation either by the Vendor or their Agent, Swoffers Limited. Intending purchasers should not rely on them as statements or representations of fact or that the property or its services or any systems or equipment are in good condition, but must satisfy themselves by inspection or otherwise as to their accuracy and operative condition. Any reference to alterations to, or use of, any part of the property is not a statement that any necessary planning, building regulations or other consent has been obtained. These matters must be verified by any intending purchaser. No person in this firm's employment has the authority to make or give any representation or warranty in respect of the property.