

The Developer will cover the document duty for any Ebenezer apartment



## Apartment 12 Ebenezer Church

Brock Road, St Peter Port, GY1 1RR

£430,000

Local Market



**swoffers**



[sales@swoffers.co.uk](mailto:sales@swoffers.co.uk) | 01481 711766

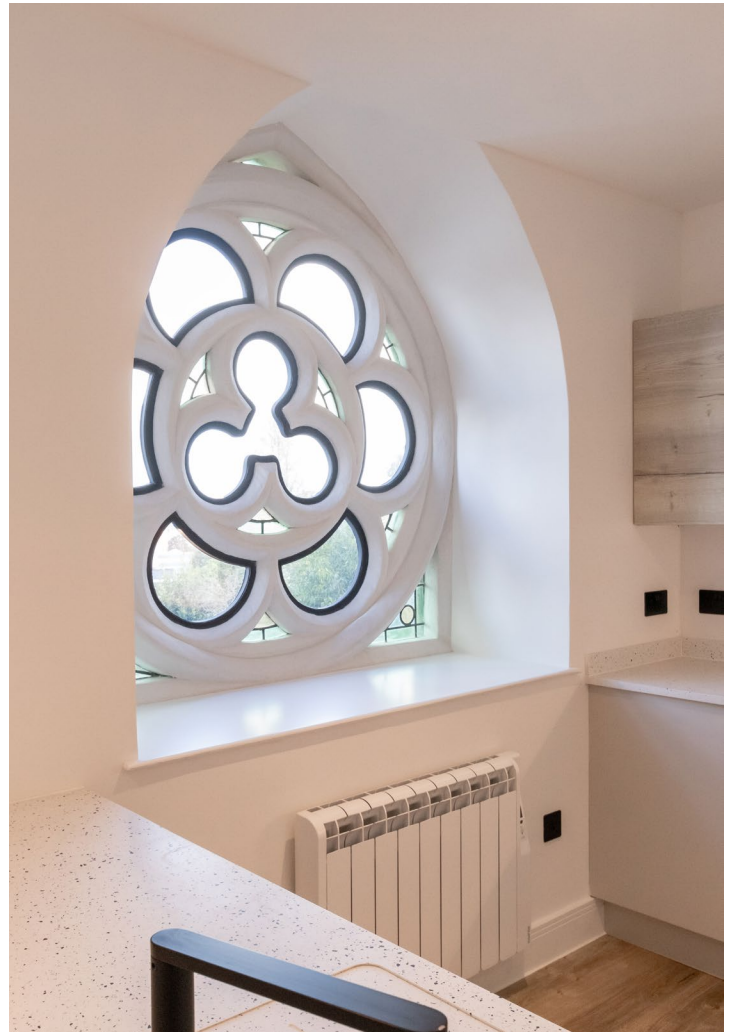
Estate House, Ann's Place, St Peter Port, Guernsey, Channel Islands, GY1 2NU

Brand new development  
First floor apartment  
One Bedroom plus study  
Off street parking

Central St. Peter Port location  
Light filled apartments  
Bursting with character throughout

Available to investors only, with guaranteed 6% per annum return for two years





## About Apartment 12 Ebenezer Church

Swoffers are delighted to offer this iconic new development to the market, giving you the chance to own a piece of Guernsey history. The original Church (dating back to 1878) has been beautifully developed and restored offering modern living whilst still retaining stunning character features throughout. The apartments are filled with natural light and many offer vaulted ceilings, exposed beams and feature Church style windows, some with stained glass. Each apartment is unique and must be viewed internally to appreciate all they have to offer. Set in a central St. Peter location with the advantage of off street parking these apartments will appeal to a multitude of buyers. Available to investors only, with a guaranteed return of 6% per annum for two years. Please contact us for further information.

### ACCOMMODATION COMPRISING

#### Entrance Hall

10'10" x 6'7" (3.3m x 2m)  
Door entry intercom system. Storage cupboard.

#### Separate WC

4'3" x 2'7" (1.3m x 0.79m)  
Two piece suite.

#### Kitchen / Dining / Living Room

23' x 18'4" (7m x 5.6m)  
Fitted with a range of wall and base units.

#### Turret Room

9'6" x 9'2" (2.9m x 2.8m)

#### Bedroom

15'3" x 13'5" (4.65m x 4.1m)

#### Ensuite Bathroom

6'8" x 5'7" (2.03m x 1.7m)

### OUTSIDE

One allocated parking space.

#### Appliances

Samsung oven, Samsung hob, Samsung extractor fan, Samsung integrated microwave, integrated Candy fridge/freezer, Candy dishwasher.

TRP: TBC

Viewing: BY APPOINTMENT

Possession: BY ARRANGEMENT

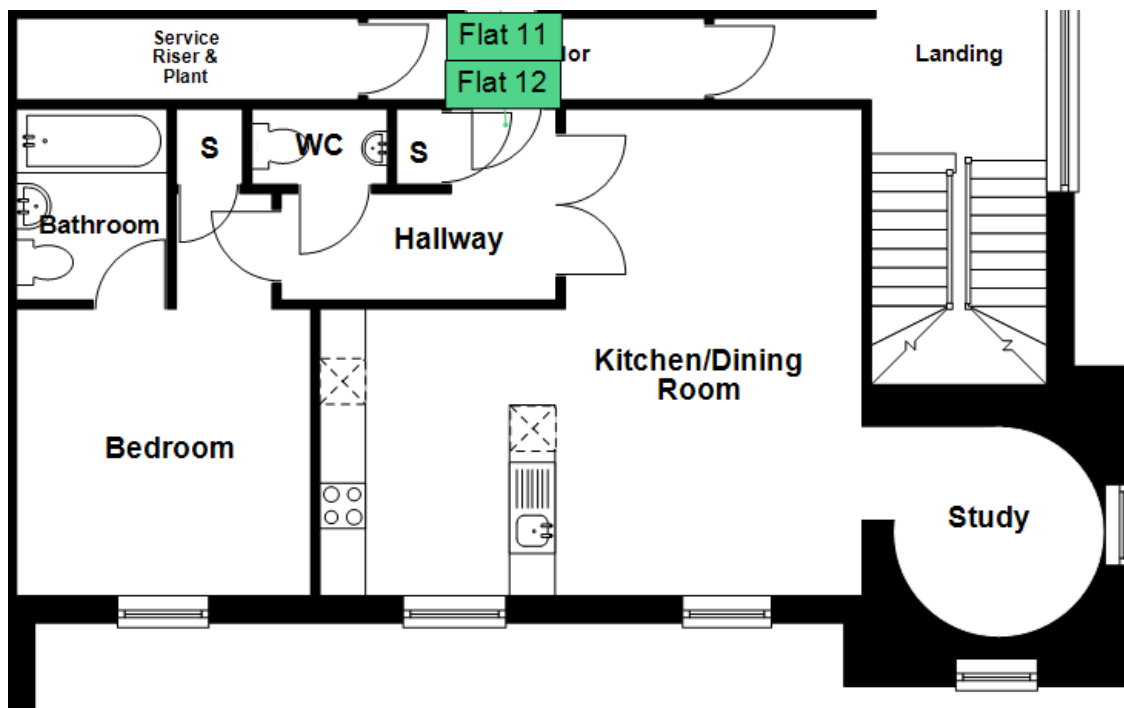
Services: Mains water, electricity and drainage. Electric central heating, under-floor heating in the bathroom.

Construction: uPVC double glazed windows.

Price includes: Carpets, light fittings and appliances as listed.

Service Charge: £242

First Floor



# swoffers



sales@swoffers.co.uk | 01481 711766

Estate House, Ann's Place, St Peter Port, Guernsey, Channel Islands, GY1 2NU

These particulars, whilst believed to be accurate are set out as a general outline only for guidance and do not constitute any part of an offer or contract. Sketch plans for illustrative purposes only. All measurements, walls, doors, windows, fittings and appliances, their sizes and locations are shown conventionally and are approximate only and cannot be regarded as being a representation either by the Vendor or their Agent, Swoffers Limited. Intending purchasers should not rely on them as statements or representations of fact or that the property or its services or any systems or equipment are in good condition, but must satisfy themselves by inspection or otherwise as to their accuracy and operative condition. Any reference to alterations to, or use of, any part of the property is not a statement that any necessary planning, building regulations or other consent has been obtained. These matters must be verified by any intending purchaser. No person in this firm's employment has the authority to make or give any representation or warranty in respect of the property.