

SOLE
AGENT



Vesta

Les Petites Fontaines, St. Peter Port, GY1 1HT

 x4  x2 PERRYS 16 D4 TRP 132

- Semi-detached townhouse
- Quiet town location
- Four bedrooms
- Terraced Garden
- Two bathrooms
- On street parking available nearby

£465,000

LOCAL MARKET

swoffers



sales@swoffers.co.uk

01481 711766

Estate House, Ann's Place, St Peter Port, Guernsey, Channel Islands, GY1 2NU



About Vesta

Vesta is a substantial granite townhouse situated in a tucked-away town location, just a short walk from the centre of town. The accommodation is split over three floors including two double bedrooms on the ground floor. On the first floor, there is a lounge, good sized kitchen/diner and shower room. An additional two bedrooms and second bathroom occupy the second floor. Completing the package, Vesta benefits from a terraced garden accessed from the first floor, boasting rooftop town views. Viewing is highly recommended.

ACCOMMODATION COMPRISING

Communal Entrance

13'10" x 6' (4.22m x 1.83m)

Understairs Cupboard

7'11" x 2'9" (2.41m x 0.84m)

Bedroom 1

12'8" x 9'8" (3.86m x 2.95m)

Bedroom 2

12'5" x 8'8" (3.78m x 2.64m)

Bedroom 4

15'3" x 11'3" (4.65m x 3.43m)

OUTSIDE

Store / Boiler House

3'9" x 3'1" (1.14m x 0.94m)

Shed

6' x 3'11" (1.83m x 1.2m)

Appliances

Belling electric oven and hob, Indesit slimline dishwasher, Beko fridge/freezer, Hotpoint freestanding fridge/freezer, Candy tumble dryer and washing machine.

TRP: 132

Viewing: BY APPOINTMENT

Possession: BY ARRANGEMENT

Services: Mains water, electricity, and drainage.

Construction: Granite. uPVC fascias and soffits.

Price includes: Carpets, curtains, light fittings and appliances as listed.

FIRST FLOOR

Landing

9'1" x 6' (2.77m x 1.83m)

Kitchen/Diner

15'2" x 10'9" (4.62m x 3.28m)

Lounge

15'3" x 11'1" (4.65m x 3.38m)

Rear Hall

5'3" x 3'1" (1.6m x 0.94m)

Shower Room

13'7" x 3'1" (4.14m x 0.94m)

SECOND FLOOR

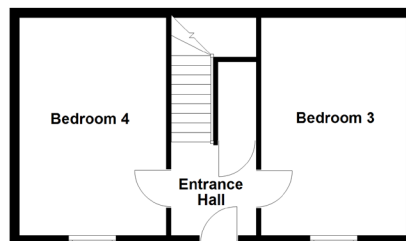
Landing

5'8" x 3'3" (1.73m x 1m)

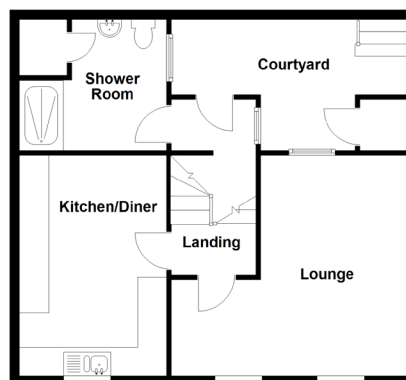
Bedroom 3

15'5" x 10'10" (4.7m x 3.3m)

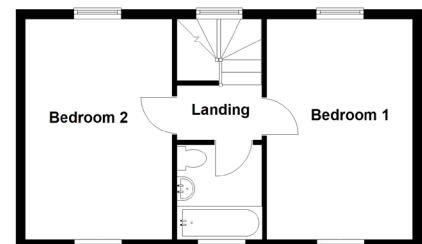
Ground Floor



First Floor



Second Floor



swoffers



sales@swoffers.co.uk

01481 711766

Estate House, Ann's Place, St Peter Port, Guernsey, Channel Islands, GY1 2NU

These particulars, whilst believed to be accurate are set out as a general outline only for guidance and do not constitute any part of an offer or contract. Sketch plans for illustrative purposes only. All measurements, walls, doors, windows, fittings and appliances, their sizes and locations are shown conventionally and are approximate only and cannot be regarded as being a representation either by the Vendor or their Agent, Swoffers Limited. Intending purchasers should not rely on them as statements or representations of fact or that the property or its services or any systems or equipment are in good condition, but must satisfy themselves by inspection or otherwise as to their accuracy and operative condition. Any reference to alterations to, or use of, any part of the property is not a statement that any necessary planning, building regulations or other consent has been obtained. These matters must be verified by any intending purchaser. No person in this firm's employment has the authority to make or give any representation or warranty in respect of the property.