



No 1, Cobo Views

Rue de Bouverie, Castel

x3 x2 **PERRYS 8A4 TRP 121**

- Immaculate new build property
- Three bedrooms, two bathrooms
- Open-plan arrangement
- Classic Cobo location
- West-facing garden
- Private driveway, parking for 3 cars.

£895,000

LOCAL MARKET

swoffers



sales@swoffers.co.uk | 01481 711766

Estate House, Ann's Place, St Peter Port, Guernsey, Channel Islands, GY1 2NU





About No 1, Cobo Views

'1 Cobo Views' is a superb new build property forming part of a small development, situated in a classic Cobo location. The accommodation on offer comprises a primary bedroom, shower room and an open-plan arrangement boasting a Sherington kitchen, sitting room and bi-fold doors leading out to the garden on the ground floor, with the first floor providing two bedrooms and a three piece bathroom. Outside, to the front there is private paved driveway, and to the rear there is a delightful west-facing rear garden, with a patio and lawn as laid.

ACCOMMODATION COMPRISING

Entrance Porch

4'11" x 3'10" (1.5m x 1.17m)

Large storage cupboard housing the electrics.

Entrance Hall

14'5" x 7'2" (4.4m x 2.18m)

One double door cupboard. Understairs cupboard.

Bedroom 3

14'4" (4.36) max & 9'4" (2.85) min x 11'2" (3.40)

Shower Room

8'2" x 4' (2.5m x 1.22m)

Fitted with a three piece suite.

Kitchen / Living Area

25'7" x 16'8" (7.8m x 5.08m)

Fitted with a range of wall and base units. A lovely bright area with skylight and bi-fold doors opening onto the garden. Integrated speaker system.

FIRST FLOOR

Landing

6'10" x 3'1" (2.08m x 0.94m)

Storage cupboard.

Bedroom 1

13'3" x 11'9" (4.04m x 3.58m)

Partial sea view over the west coast. Eaves storage.

Bedroom 2

15'4" (4.67) max & 11'9" (3.57) min x 13' (3.96)

Eaves storage. Window overlooking the front.

Bathroom

9'3" x 6'4" (2.82m x 1.93m)

Fitted with a three piece suite of bath with shower over, wash hand basin and W.C.

OUTSIDE

Front

Parking for 3-4 cars on the driveway.

Rear

Where there is a garden laid to patio and lawn. There is side access.

Appliances

Neff electric oven, Neff hob, Neff extractor fan, integrated Neff fridge/freezer, integrated Neff dishwasher.

TRP: 121

Viewing: BY APPOINTMENT

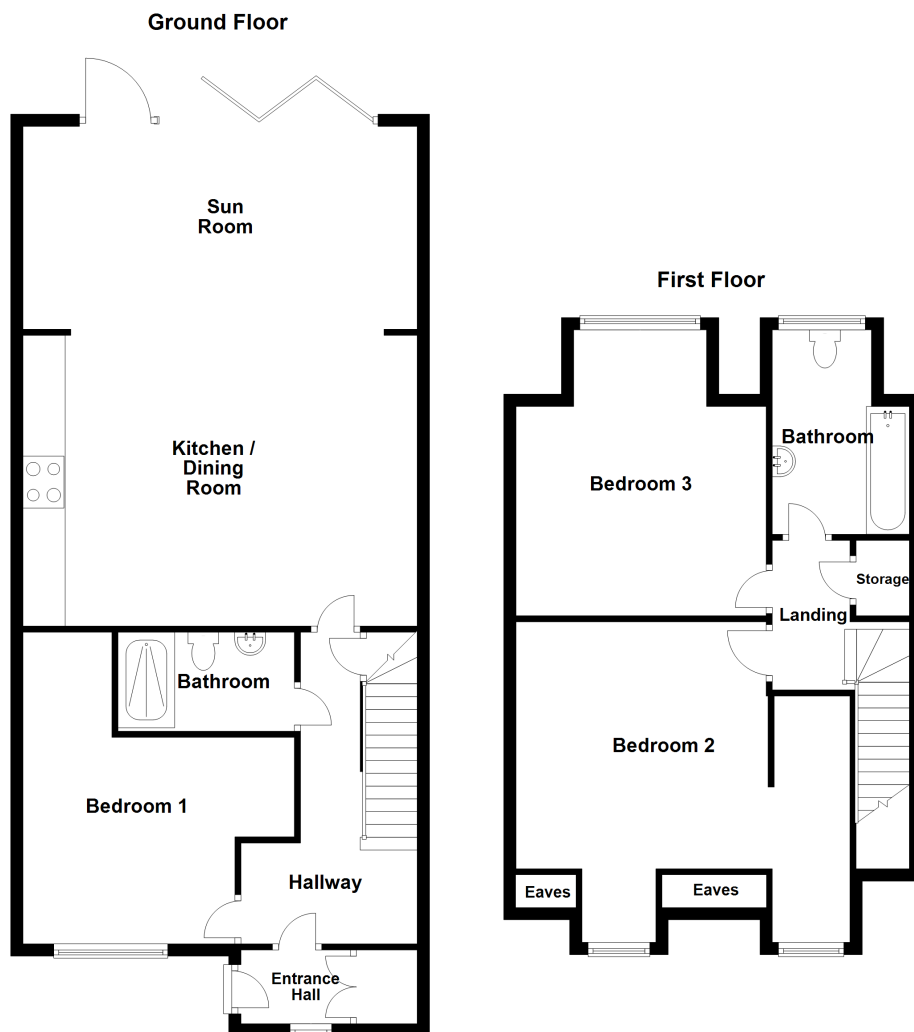
Possession: BY ARRANGEMENT

Services: All mains. Electric underfloor heating.

Construction: uPVC double glazed windows.

uPVC fascias and soffits.

Price includes: Carpets, light fittings and appliances as listed.



swoffers



sales@swoffers.co.uk | 01481 711766

Estate House, Ann's Place, St Peter Port, Guernsey, Channel Islands, GY1 2NU

These particulars, whilst believed to be accurate are set out as a general outline only for guidance and do not constitute any part of an offer or contract. Sketch plans for illustrative purposes only. All measurements, walls, doors, windows, fittings and appliances, their sizes and locations are shown conventionally and are approximate only and cannot be regarded as being a representation either by the Vendor or their Agent, Swoffers Limited. Intending purchasers should not rely on them as statements or representations of fact or that the property or its services or any systems or equipment are in good condition, but must satisfy themselves by inspection or otherwise as to their accuracy and operative condition. Any reference to alterations to, or use of, any part of the property is not a statement that any necessary planning, building regulations or other consent has been obtained. These matters must be verified by any intending purchaser. No person in this firm's employment has the authority to make or give any representation or warranty in respect of the property.