



# SHORELINE

RUETTE DES CORNEILLES, COBO, GY5 7HE

OPEN MARKET    £10,000,000

---





Swoffers are delighted to present Shoreline, a newly constructed, state-of-the-art residence located just metres from one of Guernsey's finest beaches. This iconic home enjoys uninterrupted views across Cobo Bay, offering a front-row seat to the island's most spectacular sunsets.

Built to the highest standards of design and finish, Shoreline features expansive open-plan living spaces ideal for modern lifestyles. The heart of the home is a spacious kitchen/living room that flows effortlessly onto a private rear terrace—perfect for summer entertaining or a secure play area for children.

A stunning cantilever staircase leads to the first floor living room, flooded with natural light and offering panoramic sea views. From here, step out onto the balcony, the perfect spot to relax and watch the sunset.

The remaining accommodation is both generous and versatile. There are two ground floor bedrooms, each with luxury ensuite shower rooms, a well-appointed utility room and a bespoke curved sunroom connecting to the garage block. The first floor houses a guest bedroom with balcony access and the luxurious principal suite with beachfront views, a spacious dressing area and ensuite bathroom.

Outside, the beautifully landscaped and fully irrigated gardens feature a mix of lawn, shrubs, and a paved terrace with built-in jacuzzi. A substantial brick-paved driveway offers ample parking to the front of the home.

This is a rare opportunity to acquire a landmark Guernsey property that truly embraces coastal living at its best. Early internal viewing is highly recommended.





West coast, beachfront location

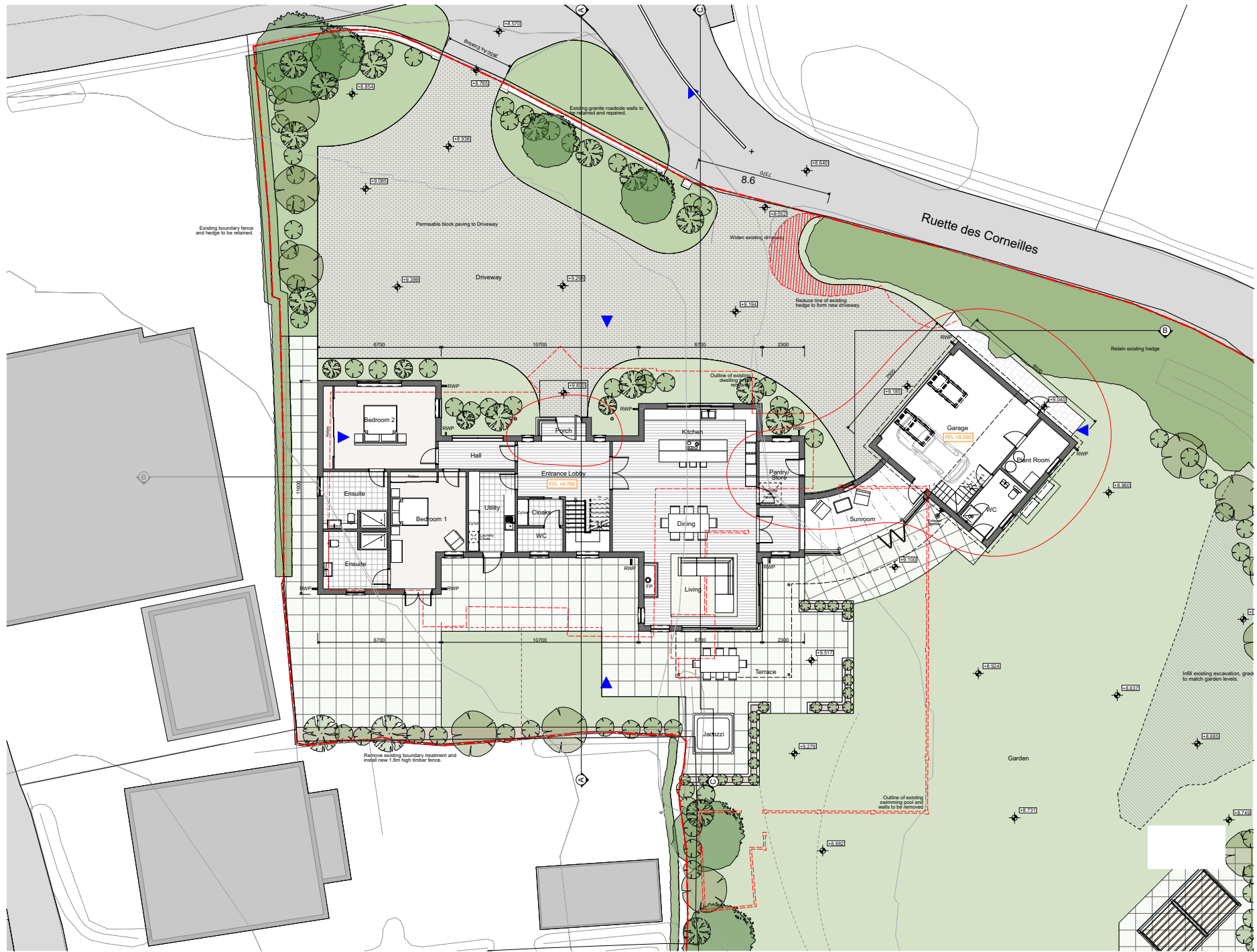
Stunning sea views

Newly built to a high specification

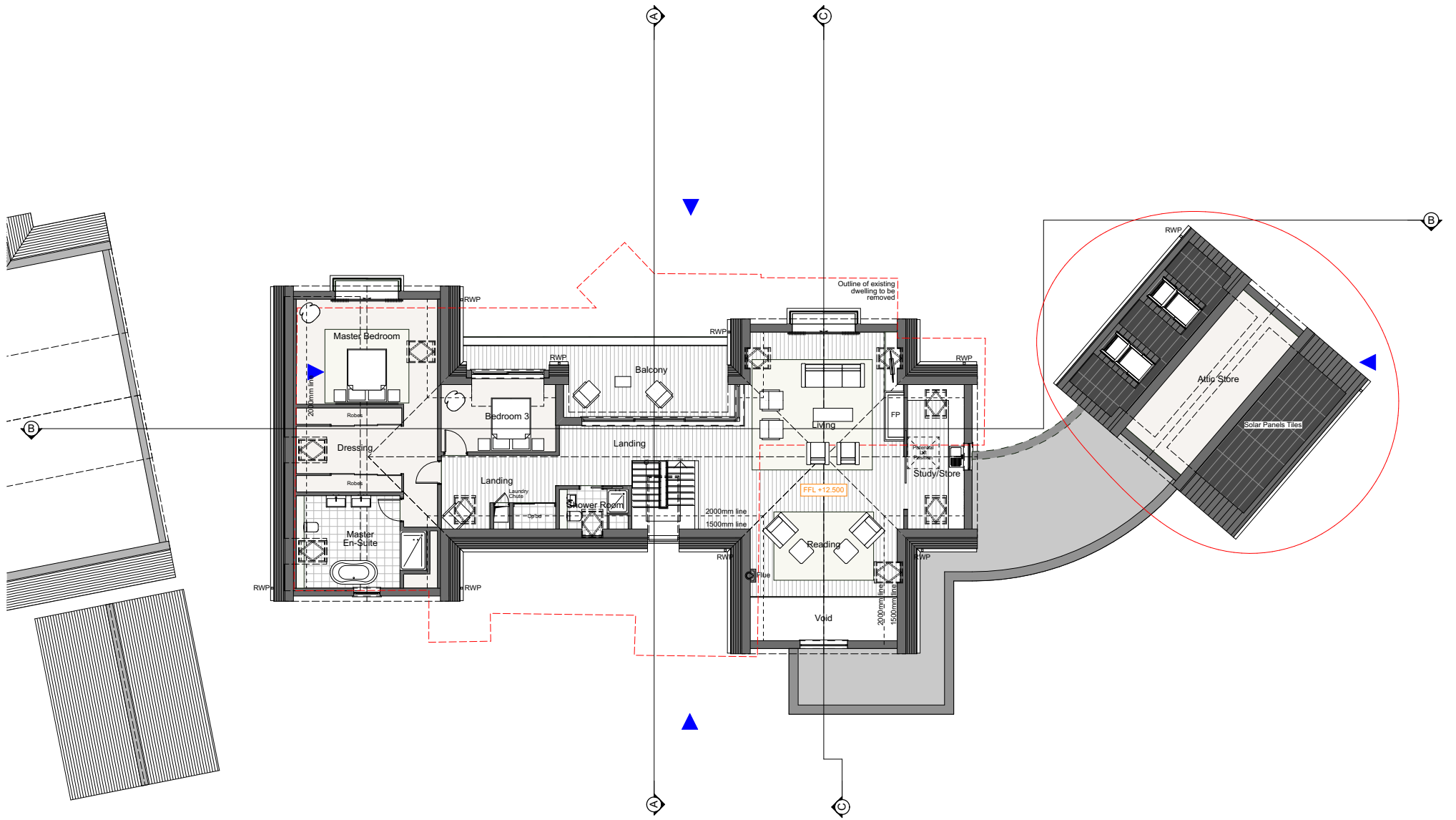
Modern open plan living

Four bedroom and four bathrooms

Double garage and gated parking



Ground Floor Plan as Proposed



First Floor Plan as Proposed

Scale 1:100

# swoffers

The key to Guernsey property

**+44 (0) 1481 711766**

**[www.swoffers.co.uk](http://www.swoffers.co.uk)**

These particulars, whilst believed to be accurate are set out as a general outline only for guidance and do not constitute any part of an offer or contract. Sketch plans for illustrative purposes only. All measurements, walls, doors, windows, fittings and appliances, their sizes and locations are shown conventionally and are approximate only and cannot be regarded as being a representation either by the Vendor or their Agent, Swoffers Limited. Intending purchasers should not rely on them as statements or representations of fact or that the property or its services or any systems or equipment are in good condition, but must satisfy themselves by inspection or otherwise as to their accuracy and operative condition. Any reference to alterations to, or use of, any part of the property is not a statement that any necessary planning, building regulations or other consent has been obtained. These matters must be verified by any intending purchaser. No person in this firm's employment has the authority to make or give any representation or warranty in respect of the property.