

SOLE
AGENT



Plot At Seaview

Arcade Steps, St. Peter Port, GY1 1JZ

PERRYS 25 G1 TRP 136

- Approved planning permission for detached house
- Stunning elevated position
- Sea views
- Located in the heart of St Peter Port

£150,000

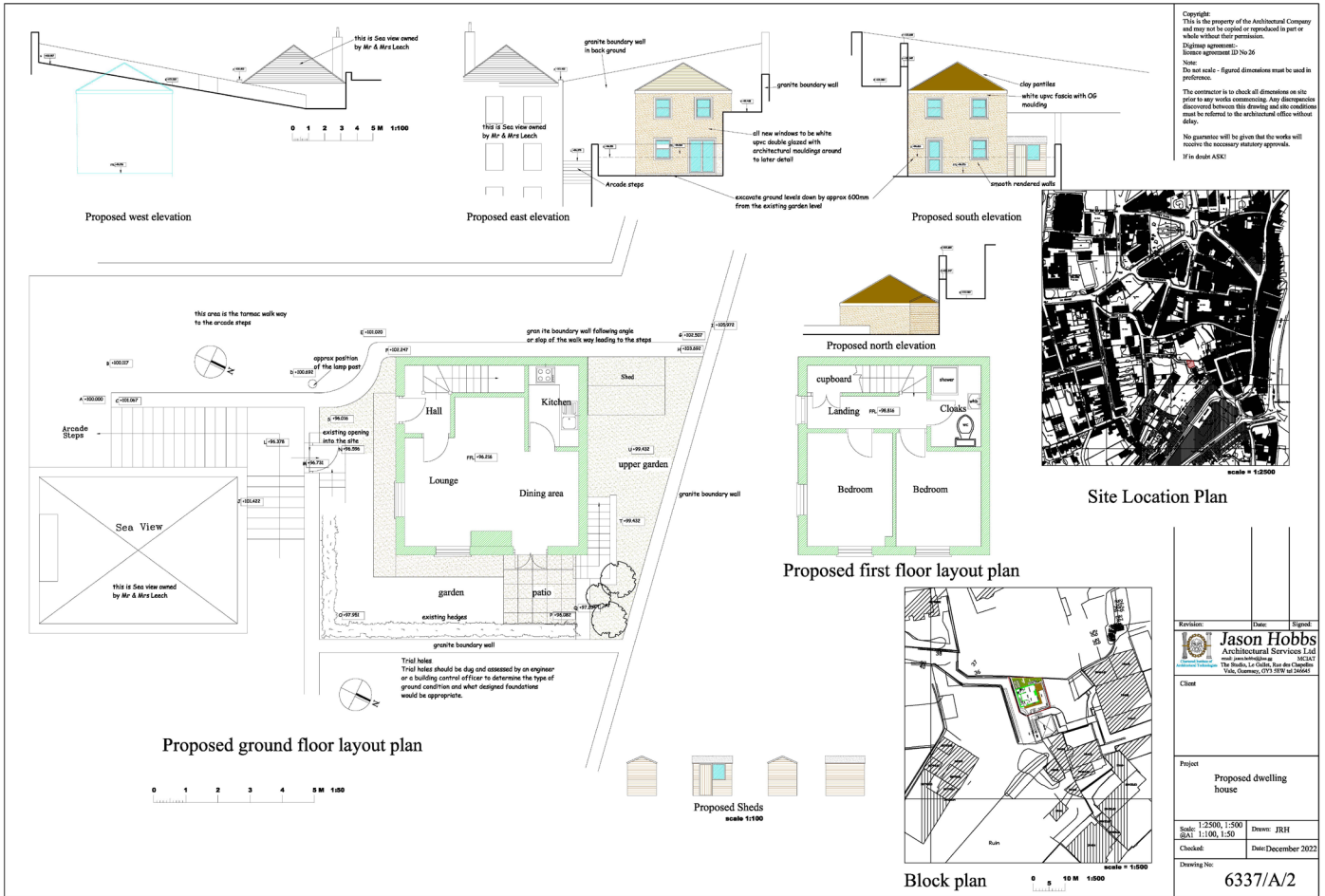
LOCAL MARKET

swoffers



sales@swoffers.co.uk | 01481 711766

Estate House, Ann's Place, St Peter Port, Guernsey, Channel Islands, GY1 2NU



About Plot At Seaview

As its name would suggest this plot lies in a stunning elevated position with sea views over the east coast and islands beyond. Situated on Arcade Steps in the heart of St Peter Port the site is private and fully enclosed by the neighbouring granite wall. There are approved plans for a detached two bedroom house, currently consisting of an open plan lounge dining area downstairs and two bedrooms with a family bathroom upstairs.

swoffers



sales@swoffers.co.uk

01481 711766

Estate House, Ann's Place, St Peter Port, Guernsey, Channel Islands, GY1 2NU

These particulars, whilst believed to be accurate are set out as a general outline only for guidance and do not constitute any part of an offer or contract. Sketch plans for illustrative purposes only. All measurements, walls, doors, windows, fittings and appliances, their sizes and locations are shown conventionally and are approximate only and cannot be regarded as being a representation either by the Vendor or their Agent, Swoffers Limited. Intending purchasers should not rely on them as statements or representations of fact or that the property or its services or any systems or equipment are in good condition, but must satisfy themselves by inspection or otherwise as to their accuracy and operative condition. Any reference to alterations to, or use of, any part of the property is not a statement that any necessary planning, building regulations or other consent has been obtained. These matters must be verified by any intending purchaser. No person in this firm's employment has the authority to make or give any representation or warranty in respect of the property.