



### 3 Infinity Apartments

Amherst, St Peter Port, GY1 1ZH

 x1  x1 PERRYS TOWN H2 TRP 65

- Stylish one bed unfurnished apartment
- Purpose built development
- Superb finish throughout
- Allocated parking, private patio area and communal balcony
- Convenient location
- Available 5th August 2026
- Rent £1,700 per month
- Deposit £1,700

**£1,700pm**

**RENTAL - LOCAL MARKET**

**swoffers**



[rentals@swoffers.co.uk](mailto:rentals@swoffers.co.uk) | 01481 721757

Estate House, Ann's Place, St Peter Port, Guernsey, Channel Islands, GY1 2NU

## About 3 Infinity Apartments

3 Infinity Apartments is part of a custom built apartment complex built to an extremely high standard by a highly regarded local developer with a reputation for producing stylish and high quality developments. This particular property has the added benefit of a private patio, communal balcony and allocated parking. Located close to the Town centre this unfurnished apartment would be perfect for a professional single person or couple. Available 5th August 2026. £1,700 deposit.

### ACCOMMODATION COMPRISING

#### Open Plan Kitchen / Living Space

18'4" x 14'7" (5.6m x 4.45m)

#### Bathroom

9'3" x 5'7" (2.82m x 1.7m)

#### Bedroom

11'1" x 10'5" (3.38m x 3.18m)

#### Appliances

Fridge/freezer, single oven, four ring electric hob with extractor over, slimline dishwasher and washer dryer.

#### OUTSIDE

To the rear of the property there is a private patio and parking for one car to the rear of the development. There is also a communal area above the carpark.

#### Services

Mains electricity, water and drainage. Electric underfloor heating.

#### Available

5th August 2026.

#### Term

One year minimum.

#### Rent

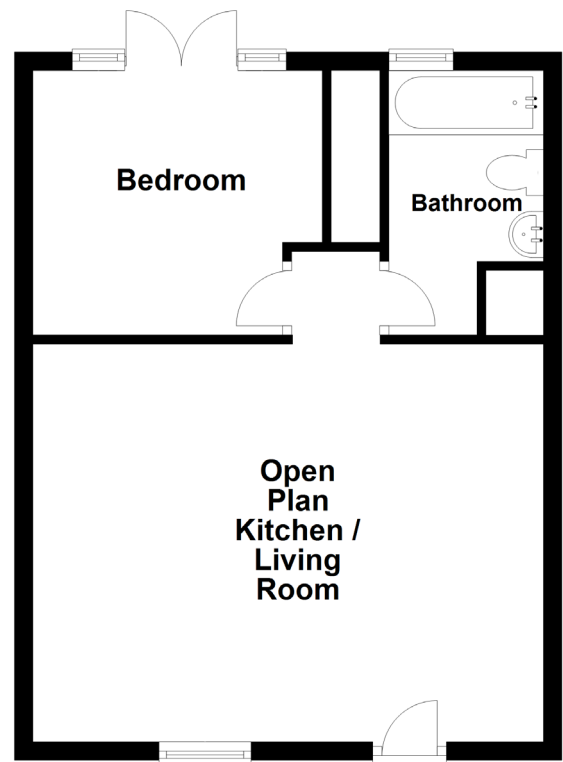
£1,700 per month.

#### Deposit

£1,700.



### Ground Floor



**swoffers**



[rentals@swoffers.co.uk](mailto:rentals@swoffers.co.uk) | 01481 721757

Estate House, Ann's Place, St Peter Port, Guernsey, Channel Islands, GY1 2NU

These particulars, whilst believed to be accurate are set out as a general outline only for guidance and do not constitute any part of an offer or contract. Sketch plans for illustrative purposes only. All measurements, walls, doors, windows, fittings and appliances, their sizes and locations are shown conventionally and are approximate only and cannot be regarded as being a representation either by the Vendor or their Agent, Swoffers Limited. Intending purchasers should not rely on them as statements or representations of fact or that the property or its services or any systems or equipment are in good condition, but must satisfy themselves by inspection or otherwise as to their accuracy and operative condition. Any reference to alterations to, or use of, any part of the property is not a statement that any necessary planning, building regulations or other consent has been obtained. These matters must be verified by any intending purchaser. No person in this firm's employment has the authority to make or give any representation or warranty in respect of the property.