

SOLE
AGENT

Flat 3, 28A Paris Street

St Peter Port | GY12BL

This top-floor apartment is located in a quiet one-way street in central St Peter Port, conveniently positioned for both central town and the amenities at Admiral Park which is in easy walking distance. The property is in move-in condition but would benefit from upgrading. The most impressive feature is stunning sea and island views from both the living area and the master bedroom. Accommodation comprises lounge/diner, kitchen, two bedrooms and a bathroom. There is excellent options for parking nearby. This would make an ideal option for first time buyers or those looking for a buy-to-let.

£330,000

2 BEDROOMS

1 BATHROOM

1 RECEPTION

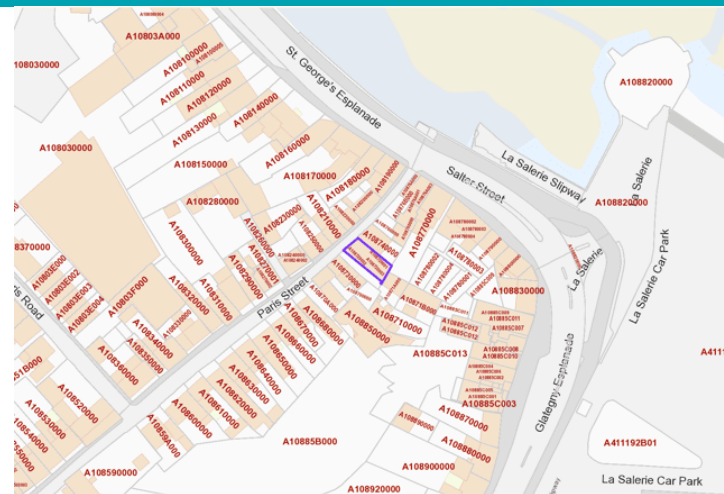
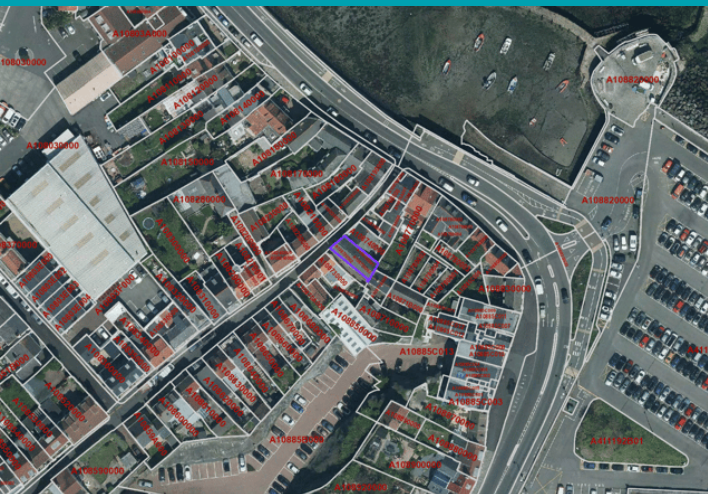
PHOTOS



PHOTOS



SPECIFICATIONS



Landing

5.98m x 0.98m (19' 7" x 3' 3")

Lounge

4.73m x 4.10m (15' 6" x 13' 5")

Kitchen

2.38m x 2.02m (7' 10" x 6' 8")

Shower Room

2.36m x 1.47m (7' 9" x 4' 10")

Bedroom 1

4.87m x 3.87m (16' 0" x 12' 8")

Bedroom 2

3.47m x 3.87m (11' 5" x 12' 8")

PRICE INCLUDES

Carpets and light fittings

SPECIAL FEATURES

- Stunning sea and Island Views
- Good on street parking nearby
- Spacious accommodation
- Convenient location
- New windows
- Excellent storage

SERVICES

Main drain, water and electricity.

APPLIANCES INCLUDED

- Single oven
- Hotpoint four ring hob
- Extractor fan
- Hotpoint washing machine
- Integrated fridge

SCHOOL CATCHMENT

- Amherst Primary School
- Les Varendes High School

GROUND FLOOR

