

SOLE
AGENT

1 Les Casquets

St Peter Port | Amherst | St Peter Port | GY12DH

Light and spacious two bedroom ground floor flat located on the outskirts of St Peter Port, with easy walking distance of both Admiral Park and Beau Sejour. In addition to it's own private entrance and parking for one large car or two small cars, the accommodation comprises entrance hall, open plan lounge/kitchen/diner, two double bedrooms and a shower room. Water rates included within the rent. Regret not suitable for pets, smokers or sharers. One child at the Landlord's discretion. Available June 2026.

£1,850 pcm

2 BEDROOMS

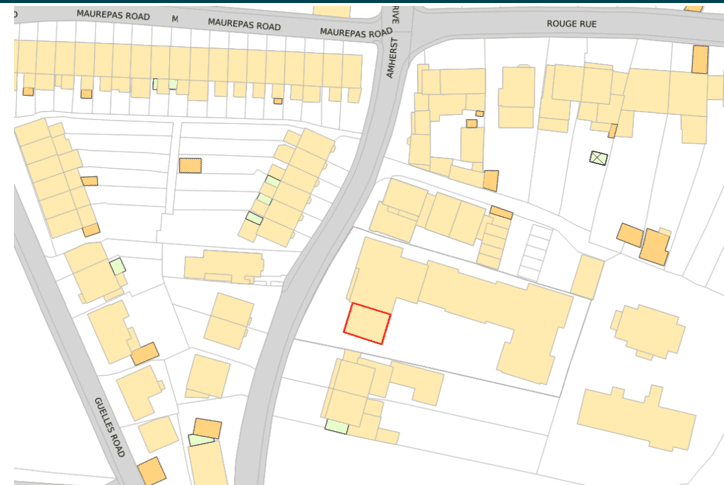
1 BATHROOM

1 RECEPTION

PHOTOS



SPECIFICATIONS



Lounge/Diner

5.35m max x 4.12m (17' 7" x 13' 6")

Kitchen

3.03m x 1.95m (9' 11" x 6' 5")

Bedroom 1

4.09m x 2.92m (13' 5" x 9' 7")

Bedroom 2

4.05m x 2.69m (13' 3" x 8' 10")

Shower Room

2.49m x 1.51m (8' 2" x 4' 11")

PRICE INCLUDES

Curtains/blinds, carpets/flooring and light fittings

SPECIAL FEATURES

- Ground floor
- Convenient location
- Private entrance
- Parking for 2 small cars

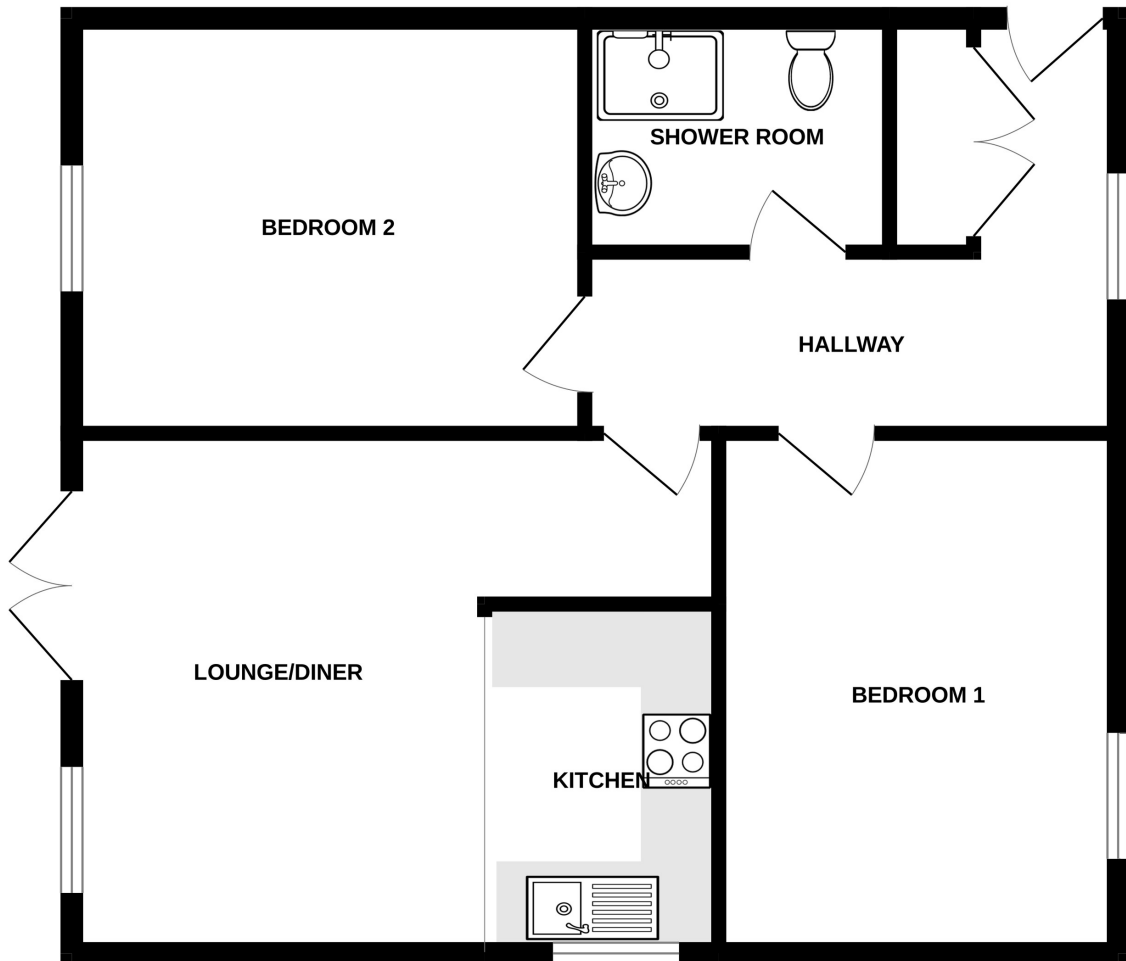
SERVICES

Mains water, electricity and drainage.

APPLIANCES INCLUDED

Electric cooker, hob and extractor
Fridge/freezer
Washing machine

GROUND FLOOR



1 LES CASQUETS

Whilst every attempt has been made to ensure the accuracy of the floorplan contained here, measurements of doors, windows, rooms and any other items are approximate and no responsibility is taken for any error, omission or mis-statement. This plan is for illustrative purposes only and should be used as such by any prospective purchaser. The services, systems and appliances shown have not been tested and no guarantee as to their operability or efficiency can be given.
Made with Metropix ©2026