

A substantial local market apartment looking out over St Peter Port.

15 Vue D'Epec, Rue de Vega, Elizabeth Avenue, GY1 2JB

 2  2  1

Guide Price £845,000

savills



A substantial local market apartment looking out over St Peter Port.

15 Vue D'Epec, Rue de Vega, Elizabeth Avenue, GY1 2JB

🛏️ 2 🚿 2 🛋️ 1

Guide Price £845,000



A substantial local market apartment looking out over St Peter Port.

15 Vue D'Epec, Rue de Vega, Elizabeth Avenue, GY1 2JB

🛏️ 2 🚿 2 🛋️ 1

Guide Price £845,000



About this property

Positioned on the third floor of the prestigious Vega development, this beautifully presented apartment offers luxurious waterfront living just a short walk from the town centre.

Boasting breath-taking sea views from both the generous open-plan living area and the principal bedroom, this home is flooded with natural light and designed for effortless, modern living.

The stylish open-plan kitchen/lounge/diner features a fully fitted contemporary kitchen and opens onto a private balcony perfect for relaxing or entertaining while enjoying the coastal outlook.

The accommodation comprises two generous bedrooms, including a principal suite on the upper floor, each with its own sleek en-suite shower room.

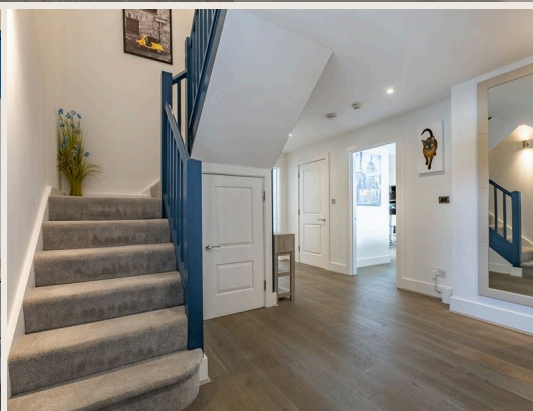


A substantial local market apartment looking out over St Peter Port.

15 Vue D'Epec, Rue de Vega, Elizabeth Avenue, GY1 2JB

🛏️ 2 🚿 2 🛋️ 1

Guide Price £845,000



A substantial local market apartment looking out over St Peter Port.

15 Vue D'Epec, Rue de Vega, Elizabeth Avenue, GY1 2JB



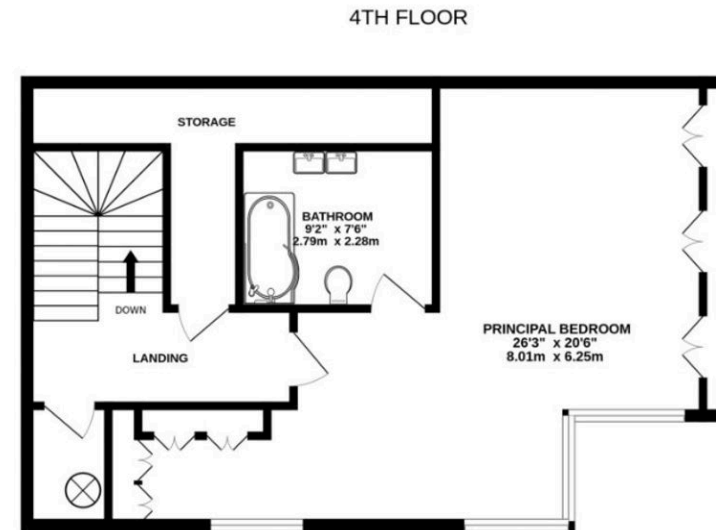
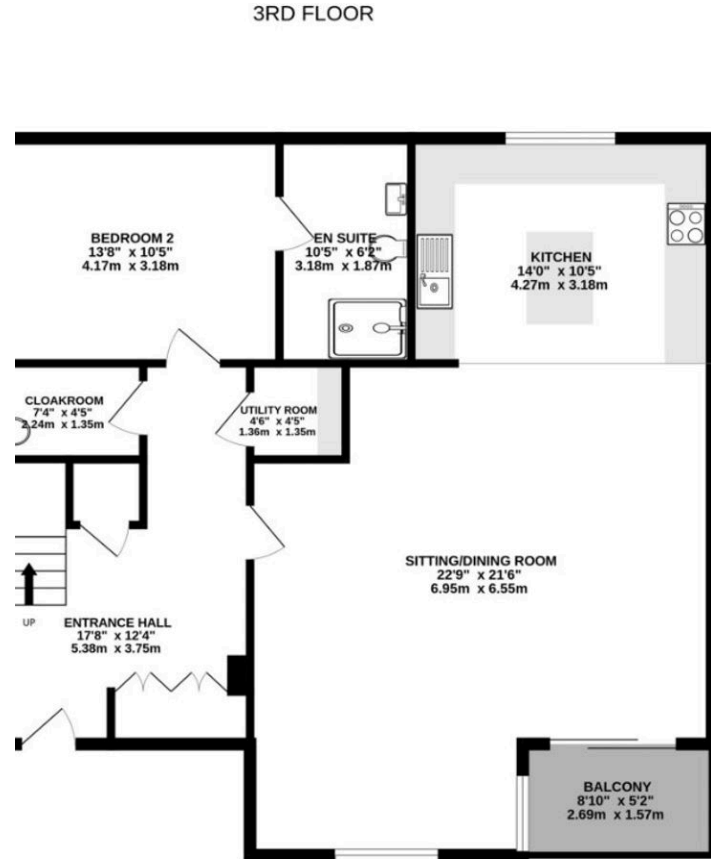
Guide Price £845,000



Plans

Approx. gross internal floor area

1,690 sq ft



Whilst every attempt has been made to ensure the accuracy of the floorplan contained here, measurements of doors, windows, rooms and any other items are approximate and no responsibility is taken for any error, omission or mis-statement. This plan is for illustrative purposes only and should be used as such by any prospective purchaser. The services, systems and appliances shown have not been tested and no guarantee as to their operability or efficiency can be given.
Made with Metropix ©2026

A substantial local market apartment
looking out over St Peter Port.

15 Vue D'Epec, Rue de Vega, Elizabeth Avenue, GY1 2JB



Guide Price £845,000



Key Information

Tenure

Freehold

Services & Additional Information

Mains water, electricity and drainage. Electric under floor heating. UPVC double glazing. The property is of modern construction. TRP 157.



A substantial local market apartment looking out over St Peter Port.

15 Vue D'Epec, Rue de Vega, Elizabeth Avenue, GY1 2JB

 2  2  1 | Guide Price £845,000



Enquire



Nick Paluch

Guernsey

+44 (0) 7781 161627

nick.paluch@savills.com

More Information



[View on website](#)



[View Digital Brochure](#)



[Property Search](#)

Viewing strictly by appointment

Published: July 2026

Property Ref: GUE260145

powered by
FluxPro

Important Notice: Savills, its clients and any joint agents give notice that 1: They are not authorised to make or give any representations or warranties in relation to the property either here or elsewhere, either on their own behalf or on behalf of their client or otherwise. They assume no responsibility for any statement that may be made in these particulars. These particulars do not form part of any offer or contract and must not be relied upon as statements or representations of fact. 2: Any areas, measurements or distances are approximate. The text, photographs and plans are for guidance only and are not necessarily comprehensive. It should not be assumed that the property has all necessary planning, building regulation or other consents and Savills have not tested any services, equipment or facilities. Purchasers must satisfy themselves by inspection or otherwise.