

A fabulous apartment with wonderful sea views and parking.

Apartment 10 Panorama House, St John's Court, Little St John Street, GY1 2PR

2 2 1

Guide Price £495,000

savills



A fabulous apartment with wonderful sea views and parking.

Apartment 10 Panorama House, St John's Court, Little St John Street, GY1 2PR



Guide Price £495,000



About this property

Forming part of a smart development built in 2015, this modern and exceptionally light two bedroom apartment is tucked away in a quiet, convenient spot in town. The open plan reception space showcases superb sea and rooftop views and provides plenty of space for living and dining.

A sleek kitchen has a large island unit at its centre, great for entertaining and everyday. A separate utility room is a practical addition and a rare find in apartments.

The principal bedroom is serviced by a smart en suite shower room and benefits from wonderful views which can be enjoyed from a Juliet balcony. A second good size bedroom is serviced by a family bathroom.

Complete with allocated parking for 1 car and additional visitor parking at the development, this apartment offers low maintenance, stylish living at its best. Viewing is highly recommended.



A fabulous apartment with wonderful sea views and parking.

Apartment 10 Panorama House, St John's Court, Little St John Street, GY1 2PR

🛏️ 2 🛁 2 🛋️ 1

Guide Price £495,000



A fabulous apartment with wonderful sea views and parking.

Apartment 10 Panorama House, St John's Court, Little St John Street, GY1 2PR



Guide Price £495,000

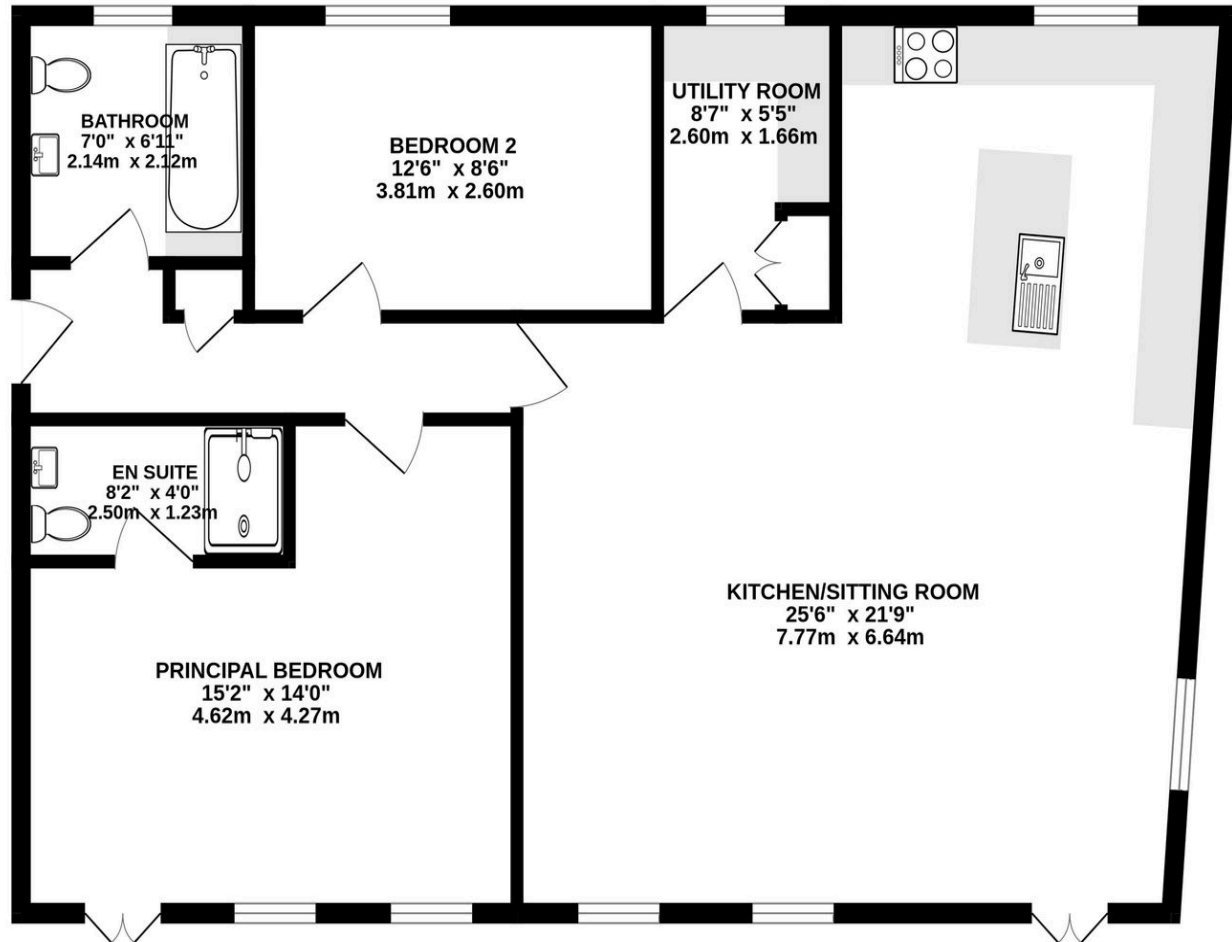


Plans

Approx. gross internal floor area

254 square meters

SECOND FLOOR



Whilst every attempt has been made to ensure the accuracy of the floorplan contained here, measurements of doors, windows, rooms and any other items are approximate and no responsibility is taken for any error.

A fabulous apartment with wonderful sea views and parking.

Apartment 10 Panorama House, St John's Court, Little St John Street, GY1 2PR



Guide Price £495,000



Key Information

Tenure

Freehold

Services & Additional Information

Mains electricity, water and drainage. Electric underfloor heating. UPVC double glazing. TRP 106. Tenure: Freehold.

Please note any total floor areas referred to within Savills Guernsey's details are provided by the States of Guernsey and are approximate only.



A fabulous apartment with wonderful sea views and parking.

Apartment 10 Panorama House, St John's Court, Little St John Street, GY1 2PR

 2  2  1 | Guide Price £495,000



Enquire



Monique Search

Guernsey

+44 (0) 1481 713463

monique.search@savills.com

More Information



[View on website](#)



[View Digital Brochure](#)



[Property Search](#)

Viewing strictly by appointment

Published: June 2026

Property Ref: GUE260093

powered by
FluxPro

Important Notice: Savills, its clients and any joint agents give notice that 1: They are not authorised to make or give any representations or warranties in relation to the property either here or elsewhere, either on their own behalf or on behalf of their client or otherwise. They assume no responsibility for any statement that may be made in these particulars. These particulars do not form part of any offer or contract and must not be relied upon as statements or representations of fact. 2: Any areas, measurements or distances are approximate. The text, photographs and plans are for guidance only and are not necessarily comprehensive. It should not be assumed that the property has all necessary planning, building regulation or other consents and Savills have not tested any services, equipment or facilities. Purchasers must satisfy themselves by inspection or otherwise.