

A four story property with unbeatable views and great potential.

Hauteville, St Peter Port, GY1 1DG

🛏️ 3 🚿 2 🛋️ 2

Guide Price £675,000

savills



A four story property with unbeatable views and great potential.

Hauteville, St Peter Port, GY1 1DG

3 2 2

Guide Price £675,000



About this property

24 Hauteville spans over four floors offering ample accommodation with access either via the basement, through the main front door both on Hauteville which offers an excellent opportunity to create multigenerational living.

Offering three well proportioned bedrooms, ample living space and terrace to enjoy the beautiful views over Castel Cornet, this property is worthy of further inspection.

Requiring renovation throughout, the property would benefit from a new roof, windows and cosmetic upgrades.

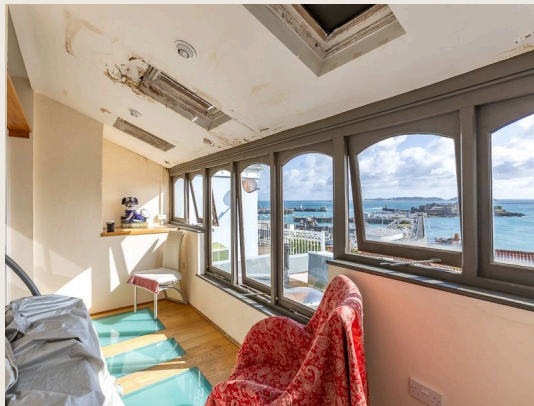


A four story property with unbeatable views and great potential.

Hauteville, St Peter Port, GY1 1DG

3 2 2

Guide Price £675,000



A four story property with unbeatable views and great potential.

Hauteville, St Peter Port, GY1 1DG



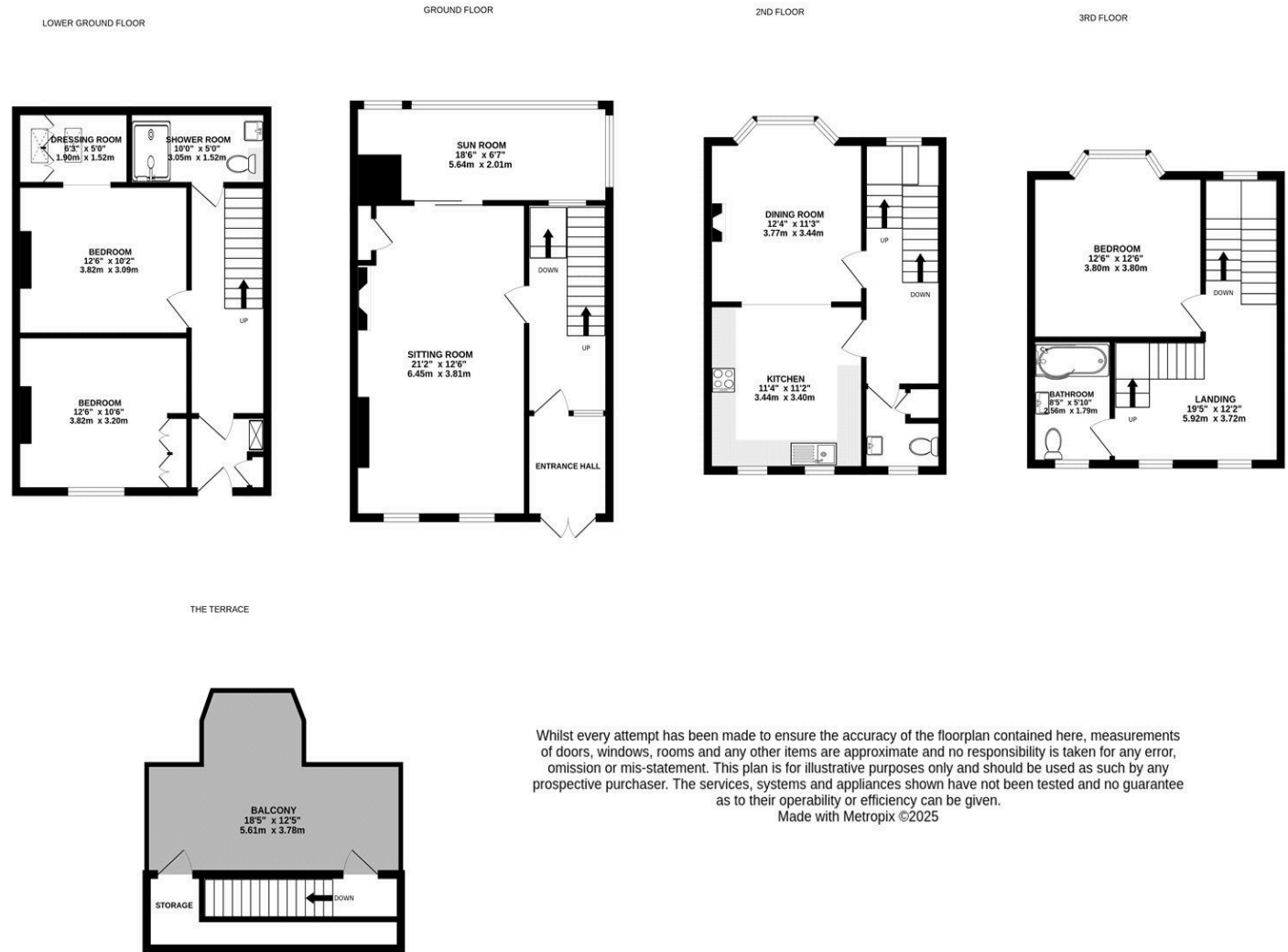
Guide Price £675,000



Plans

Approx. gross internal floor area

2,217 sq ft



A four story property with unbeatable views and great potential.

Hauteville, St Peter Port, GY1 1DG



Guide Price £675,000



Key Information

Tenure

Freehold

Services & Additional Information

Mains electricity, water and drainage. electric central heating. We understand the property is of block construction. wooden single glazing. Tenure: Freehold. TRP 206 .

Please note any total floor areas referred to within Savills Guernsey's details are provided by the States of Guernsey and are approximate only.



A four story property with unbeatable views and great potential.

Hauteville, St Peter Port, GY1 1DG



Guide Price £675,000



Enquire



Megan Chipperfield

Guernsey

+44 (0) 1481 713 463

megan.chipperfield@savills.com

More Information



[View on website](#)



[View Digital Brochure](#)



[Property Search](#)

Viewing strictly by appointment

Published: September 2025

Property Ref: GUE250261

powered by
FluxPro

Important Notice: Savills, its clients and any joint agents give notice that 1: They are not authorised to make or give any representations or warranties in relation to the property either here or elsewhere, either on their own behalf or on behalf of their client or otherwise. They assume no responsibility for any statement that may be made in these particulars. These particulars do not form part of any offer or contract and must not be relied upon as statements or representations of fact. 2: Any areas, measurements or distances are approximate. The text, photographs and plans are for guidance only and are not necessarily comprehensive. It should not be assumed that the property has all necessary planning, building regulation or other consents and Savills have not tested any services, equipment or facilities. Purchasers must satisfy themselves by inspection or otherwise.