

Superb Georgian townhouse with lovely garden, garage and parking.

Brock Terrace, La Grange, St Peter Port, GY1 1RQ

🛏 5 🛁 3 🛋 3

Guide Price £1,520,000

savills



# Superb Georgian townhouse with lovely garden, garage and parking.

Brock Terrace, La Grange, St Peter Port, GY1 1RQ

5 3 3

Guide Price £1,520,000



# Superb Georgian townhouse with lovely garden, garage and parking.

Brock Terrace, La Grange, St Peter Port, GY1 1RQ



5



3



3

Guide Price £1,520,000



## About this property

This well presented Georgian townhouse is situated in a convenient central location, close to the centre of St Peter Port.

Offering substantial accommodation spanning four floors, the property offers charming character features throughout. With large windows providing an abundance of light, the property has a great balance of reception space, bedrooms and bathrooms to suit a multitude of purchasers.

To the rear of the property is a fully enclosed, south facing garden with lovely mature planting. At the end of the garden is a double garage, while to the front of the house is ample parking.



# Superb Georgian townhouse with lovely garden, garage and parking.

Brock Terrace, La Grange, St Peter Port, GY1 1RQ

5 3 3

Guide Price £1,520,000



# Superb Georgian townhouse with lovely garden, garage and parking.

Brock Terrace, La Grange, St Peter Port, GY1 1RQ

5  3  3 

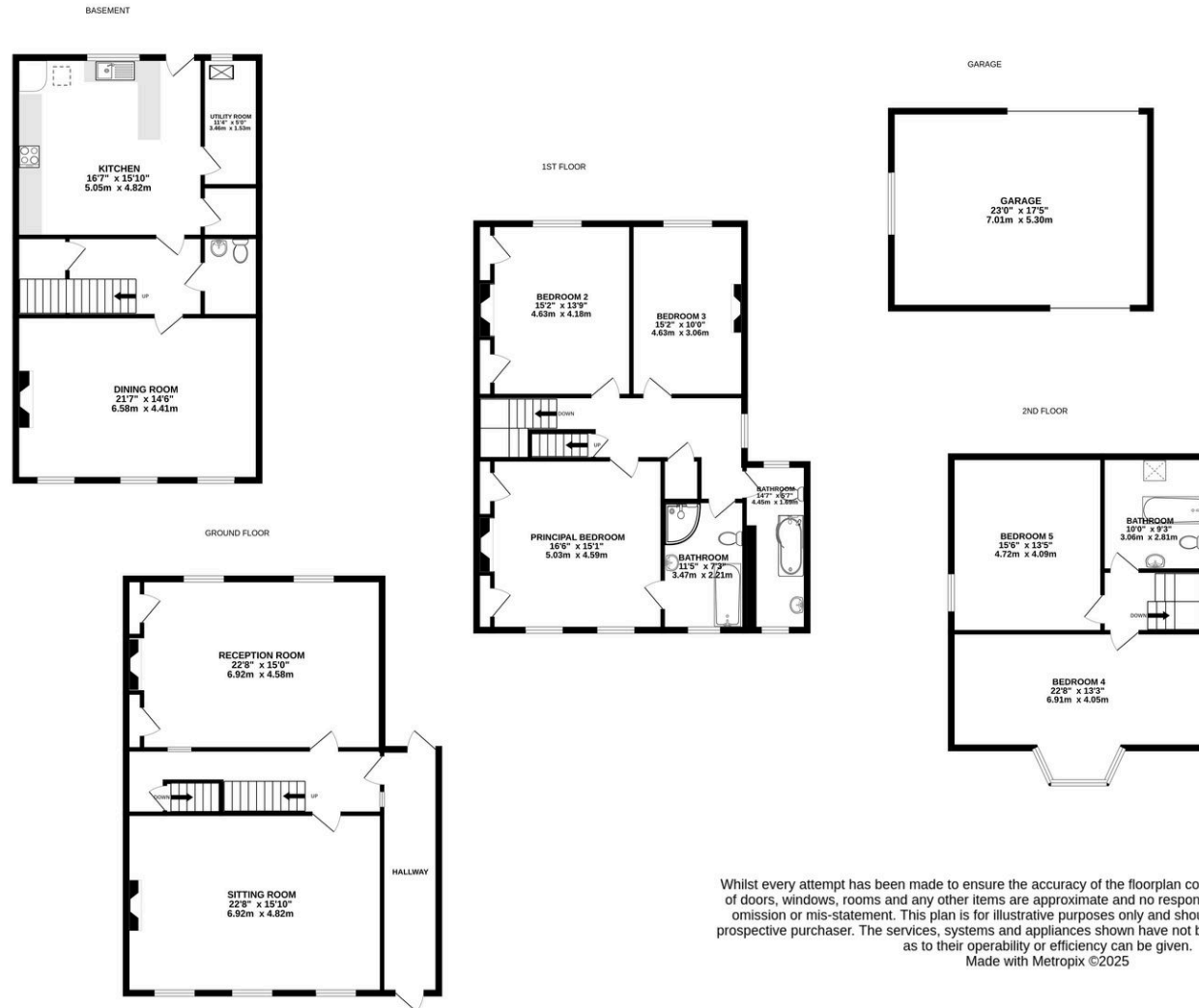
Guide Price £1,520,000



## Plans

Approx. gross internal floor area

397 square meters



Whilst every attempt has been made to ensure the accuracy of the floorplan contained here, measurements of doors, windows, rooms and any other items are approximate and no responsibility is taken for any error, omission or mis-statement. This plan is for illustrative purposes only and should be used as such by any prospective purchaser. The services, systems and appliances shown have not been tested and no guarantee as to their operability or efficiency can be given.  
Made with Metropix ©2025

Superb Georgian townhouse with lovely garden, garage and parking.

Brock Terrace, La Grange, St Peter Port, GY1 1RQ

 5  3  3

Guide Price £1,520,000



## Key Information

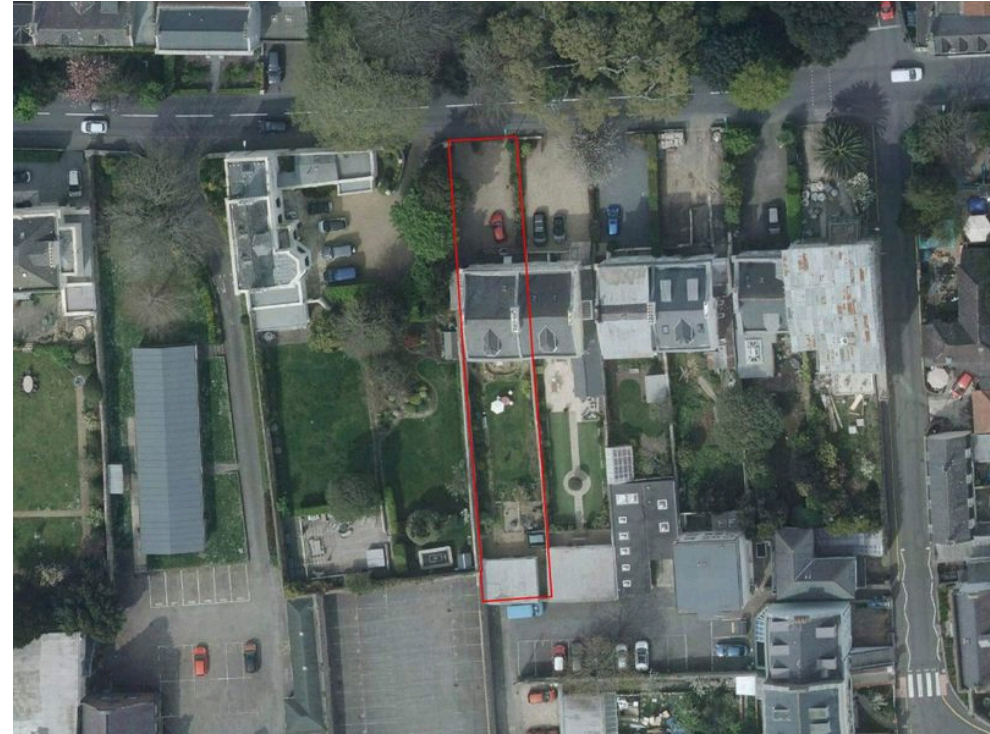
### Tenure

Freehold

### Services & Additional Information




Mains electricity, water, gas and drainage. Oil fired central heating. Wooden single glazing. We understand the property is of traditional construction. Tenure: Freehold. TRP 397.

Please note any total floor areas referred to within Savills Guernsey's details are provided by the States of Guernsey and are approximate only.



Superb Georgian townhouse with lovely garden, garage and parking.

Brock Terrace, La Grange, St Peter Port, GY1 1RQ

 5  3  3 | Guide Price £1,520,000



## Enquire



**Kelsey Gerrard**

Guernsey

+44 (0) 1481 713 463

kelsey.gerrard@savills.com

## More Information



[View on website](#)



[View Digital Brochure](#)



[Property Search](#)

**Viewing strictly by appointment**

Published: March 2026

Property Ref: GUE250220

powered by  
**FluxPro**

Important Notice: Savills, its clients and any joint agents give notice that 1: They are not authorised to make or give any representations or warranties in relation to the property either here or elsewhere, either on their own behalf or on behalf of their client or otherwise. They assume no responsibility for any statement that may be made in these particulars. These particulars do not form part of any offer or contract and must not be relied upon as statements or representations of fact. 2: Any areas, measurements or distances are approximate. The text, photographs and plans are for guidance only and are not necessarily comprehensive. It should not be assumed that the property has all necessary planning, building regulation or other consents and Savills have not tested any services, equipment or facilities. Purchasers must satisfy themselves by inspection or otherwise.