

Fantastic apartment with parking and terrace overlooking marina.

Apartment 9 Roustel House, Royal Terrace, Gategny Esplanade, GY1 2JY

2 2 1

Guide Price £650,000

savills



Fantastic apartment with parking and terrace overlooking marina.

Apartment 9 Roustel House, Royal Terrace, Gategny Esplanade, GY1 2JY

2 2 1

Guide Price £650,000



Fantastic apartment with parking and terrace overlooking marina.

Apartment 9 Roustel House, Royal Terrace, Gategny Esplanade, GY1 2JY



Guide Price £650,000



About this property

Forming part of the luxurious Royal Terrace, Apartment 9 Roustel House offers all the convenience of town living right on the sea front.

The square footage is generous, providing ample space not often found in apartments. There is an abundance of natural light in the open plan living area and a terraced area accessed via double doors benefits from a southerly aspect with views to the east.

Fixtures and fittings are of excellent quality throughout, with fully integrated appliances and granite worktops in the kitchen and both bathrooms (one en suite) travertine tiled and fitted with Villeroy & Bosch sanitary ware. The two bedrooms are well appointed with the master boasting excellent integrated storage solutions.

The common areas of Royal Terrace have also been completed to the highest of standards and there are two allocated parking spaces designated to 9 Roustel in the secure underground car park.



Fantastic apartment with parking and terrace overlooking marina.

Apartment 9 Roustel House, Royal Terrace, Gategny Esplanade, GY1 2JY

2 2 1

Guide Price £650,000



Fantastic apartment with parking and terrace overlooking marina.

Apartment 9 Roustel House, Royal Terrace, Gategny Esplanade, GY1 2JY



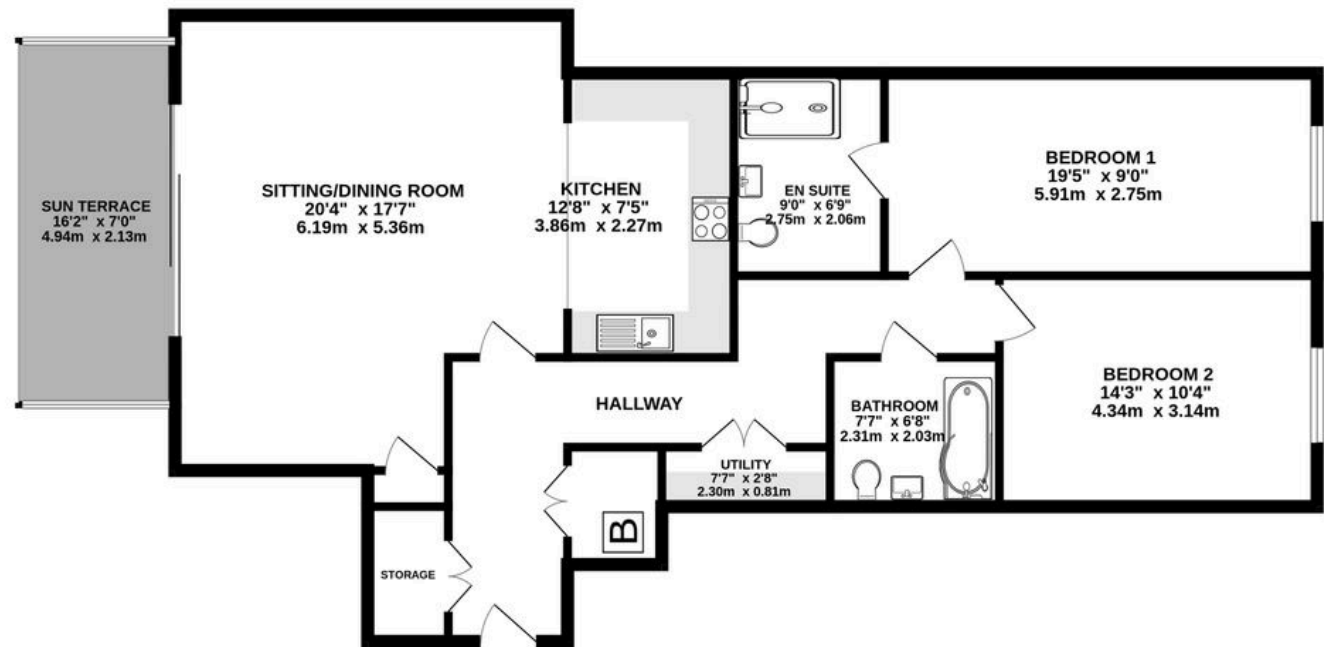
Guide Price £650,000



Plans

Approx. gross internal floor area

111 Square meters



Whilst every attempt has been made to ensure the accuracy of the floorplan contained here, measurements of doors, windows, rooms and any other items are approximate and no responsibility is taken for any error, omission or mis-statement. This plan is for illustrative purposes only and should be used as such by any prospective purchaser. The services, systems and appliances shown have not been tested and no guarantee as to their operability or efficiency can be given.
Made with Metropix ©2024

Fantastic apartment with parking and terrace overlooking marina.

Apartment 9 Roustel House, Royal Terrace, Glategny Esplanade, GY1 2JY



Guide Price £650,000



Key Information

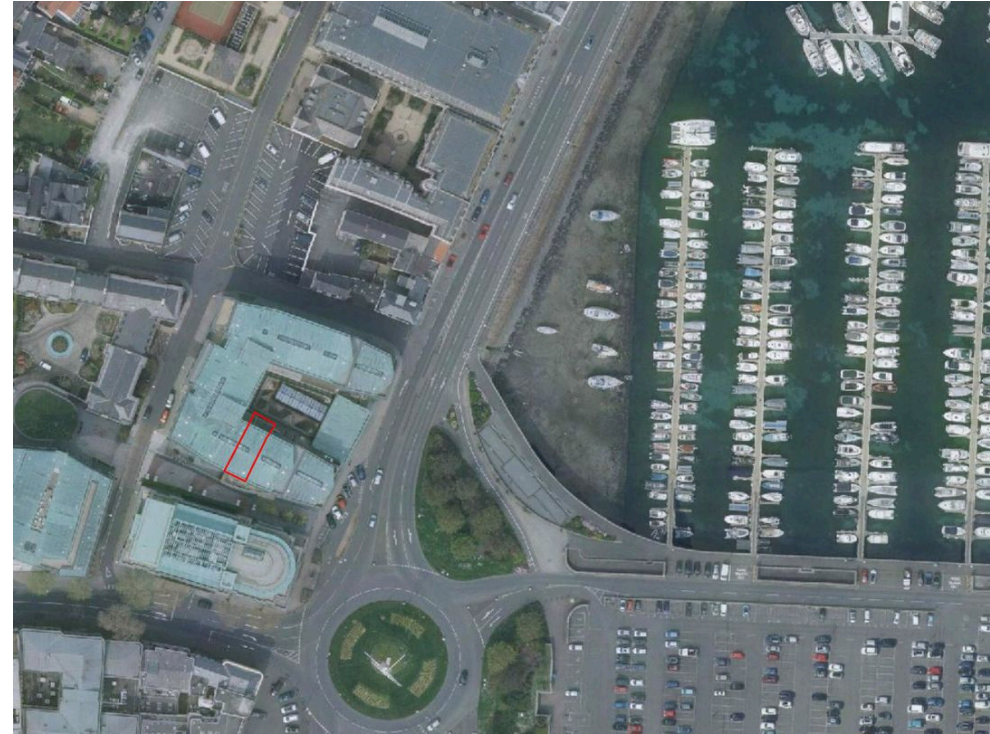
Tenure

Freehold

Services & Additional Information


Mains electricity, water and drainage. Electric underfloor heating. We understand the property to be of cavity construction. UPVC double glazed windows. TRP 111.

Please note any total floor areas referred to within Savills Guernsey's details are provided by the States of Guernsey and are approximate only.



Fantastic apartment with parking and terrace overlooking marina.

Apartment 9 Roustel House, Royal Terrace, Gategny Esplanade, GY1 2JY

 2  2  1 | Guide Price £650,000



Enquire



Monique Search

Guernsey

+44 1481 713463

monique.search@savills.com

More Information



[View on website](#)



[View Digital Brochure](#)



[Property Search](#)

Viewing strictly by appointment

Published: May 2024

Property Ref: GUE240148

powered by
FluxPro

Important Notice: Savills, its clients and any joint agents give notice that 1: They are not authorised to make or give any representations or warranties in relation to the property either here or elsewhere, either on their own behalf or on behalf of their client or otherwise. They assume no responsibility for any statement that may be made in these particulars. These particulars do not form part of any offer or contract and must not be relied upon as statements or representations of fact. 2: Any areas, measurements or distances are approximate. The text, photographs and plans are for guidance only and are not necessarily comprehensive. It should not be assumed that the property has all necessary planning, building regulation or other consents and Savills have not tested any services, equipment or facilities. Purchasers must satisfy themselves by inspection or otherwise.