

A rare opportunity to acquire a period property with a commercial unit.

Confidential Listing, Vale Road, St Sampson, GY2 4DG

 4  3  2

| Guide Price £1,450,000

savills



# A rare opportunity to acquire a period property with a commercial unit.

Confidential Listing, Vale Road, St Sampson, GY2 4DG

4 3 2

Guide Price £1,450,000



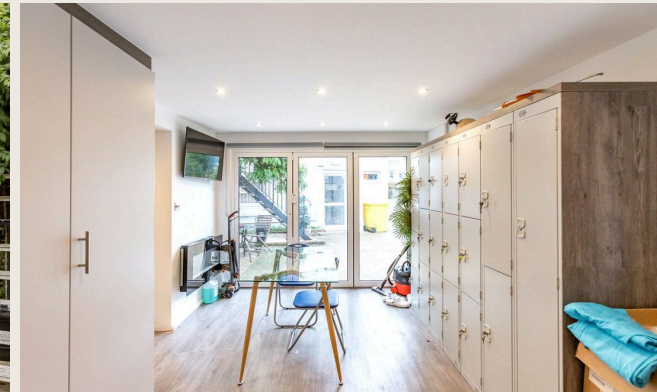
## About this property

A rare opportunity to acquire an Open Market home with an adjoining independent commercial unit on the lower ground floor, with potential to convert into residential accommodation subject to planning permission.

The original building on the site is a charming Victorian townhouse which has been well maintained and extended over the years to now provide a large Open Market maisonette together with an independent commercial unit on the lower ground floor.

Alongside the main building is a detached outbuilding which has been converted for use by the commercial unit but has potential for further development and extension subject to planning.

All in all this is a site which must be seen to be appreciated and further enquiries are encouraged to one of our team.



A rare opportunity to acquire a period property with a commercial unit.

Confidential Listing, Vale Road, St Sampson, GY2 4DG

4 3 2

Guide Price £1,450,000



A rare opportunity to acquire a period property with a commercial unit.

Confidential Listing, Vale Road, St Sampson, GY2 4DG

4  3  2 

Guide Price £1,450,000



## Plans

Approx. gross internal floor area

4,876 sq ft



A rare opportunity to acquire a period property with a commercial unit.

Confidential Listing, Vale Road, St Sampson, GY2 4DG

 4  3  2

Guide Price £1,450,000



## Key Information

### Tenure

Freehold

### Services & Additional Information



Mains water, electricity and drainage. Oil fired central heating UPVC double glazed windows. We understand the property to be of block construction. TRP 453

Please note any total floor areas referred to within Savills Guernsey's details are provided by the States of Guernsey and are approximate only.



A rare opportunity to acquire a period property with a commercial unit.

Confidential Listing, Vale Road, St Sampson, GY2 4DG

 4  3  2 | Guide Price £1,450,000



## Enquire



**Nick Paluch**

Guernsey

+44 (0) 7781 161627

nick.paluch@savills.com

## More Information



[View on website](#)



[View Digital Brochure](#)



[Property Search](#)

**Viewing strictly by appointment**

Published: November 2023

Property Ref: GUE220473

powered by  
**FluxPro**

Important Notice: Savills, its clients and any joint agents give notice that 1: They are not authorised to make or give any representations or warranties in relation to the property either here or elsewhere, either on their own behalf or on behalf of their client or otherwise. They assume no responsibility for any statement that may be made in these particulars. These particulars do not form part of any offer or contract and must not be relied upon as statements or representations of fact. 2: Any areas, measurements or distances are approximate. The text, photographs and plans are for guidance only and are not necessarily comprehensive. It should not be assumed that the property has all necessary planning, building regulation or other consents and Savills have not tested any services, equipment or facilities. Purchasers must satisfy themselves by inspection or otherwise.