



Immaculate two bedroom, three bathroom apartment with outside space and parking.

9 Candie Apartments, Candie Road, St Peter Port, GY1 1UQ

£2,900 pcm



- Two bedroom, three bathroom apartment
- Excellent space split over two levels
 - Balcony and private terrace area
 - Underground parking space
 - Situated in a central location

Local Information

A local market property in Guernsey which can only be occupied by those who are locally qualified or hold a current local permit

About this property

This well presented, furnished apartment is offered to the market in immaculate condition throughout.

Comprising excellent space throughout, the accommodation is split over two levels with an open plan living room and kitchen and a shower room on the ground floor. Going down to the lower ground floor there are two good size double bedrooms, both en suite, along with a utility room.

The apartment further benefits from a balcony and private terrace area, along with underground parking for one vehicle.

Furnishing

Furnished

Additional Information

Term: One year minimum.

Services: Mains water, electricity and drainage.

Gas and electric heating.

Available: 1st August 2026

Rent: £2,900 per month

Deposit: Equivalent to one month's rent.

Directions

Travelling down Candie Road, the apartment forms part of the development that makes the final corner before St Julians Avenue. Access to the courtyard is via the private access road before the development.

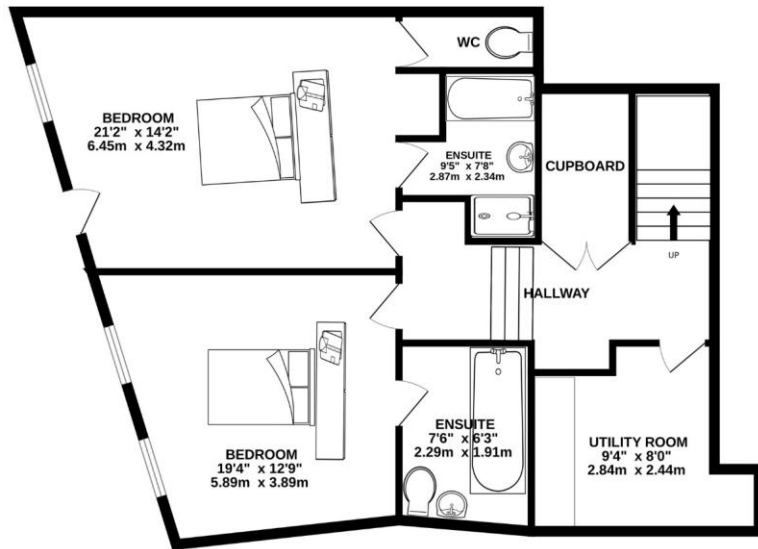
Viewing

All viewings will be accompanied and are strictly by prior arrangement through Savills Guernsey Lettings Office. Telephone: +44 (0) 1481 810 300.

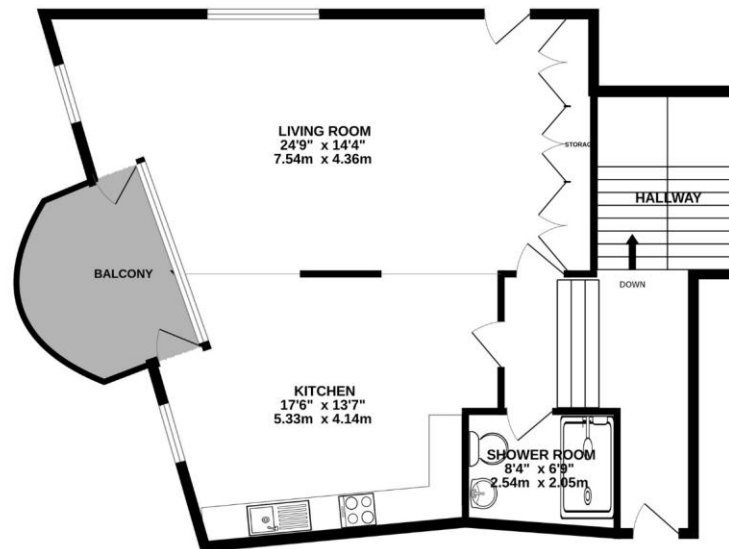




LOWER GROUND FLOOR



GROUND FLOOR



Whilst every attempt has been made to ensure the accuracy of the floorplan contained here, measurements of doors, windows, rooms and any other items are approximate and no responsibility is taken for any error, omission or mis-statement. This plan is for illustrative purposes only and should be used as such by any prospective purchaser. The services, systems and appliances shown have not been tested and no guarantee as to their operability or efficiency can be given.
 Made with Metropix ©2024

Important notice Savills, their clients and any joint agents give notice that: 1. They are not authorised to make or give any representations or warranties in relation to the property either here or elsewhere, either on their own behalf or on behalf of their client or otherwise. They assume no responsibility for any statement that may be made in these particulars. These particulars do not form part of any offer or contract and must not be relied upon as statements or representations of fact. 2. Any areas, measurements or distances are approximate. The text, images and plans are for guidance only and are not necessarily comprehensive. It should not be assumed that the property has all necessary planning, building regulation or other consents and Savills have not tested any services, equipment or facilities. Prospective tenants must satisfy themselves by inspection or otherwise. Please note that the local area may be affected by aircraft noise, you should make your own enquiries regarding any noise within the area before you make any offer.

*There are different rules and fees for different tenancy types. For details of our fees and charges please go to Savills.co.uk/tenant-fees. For more detailed information read our applicant guide at savills.co.uk/applicant-guide. Hard copy available on request. . 20260623MDBT



arla | **propertymark**

PROTECTED