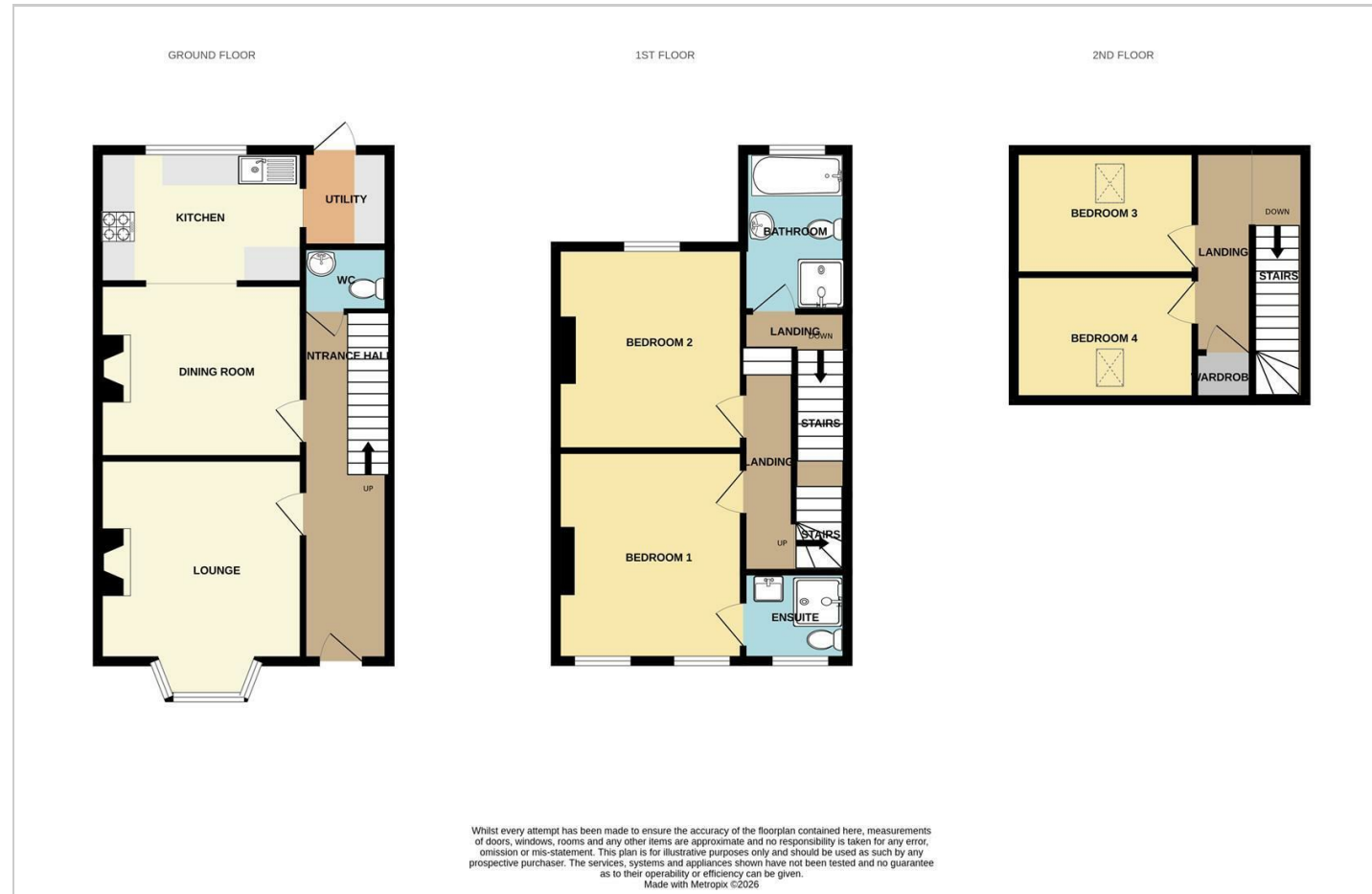
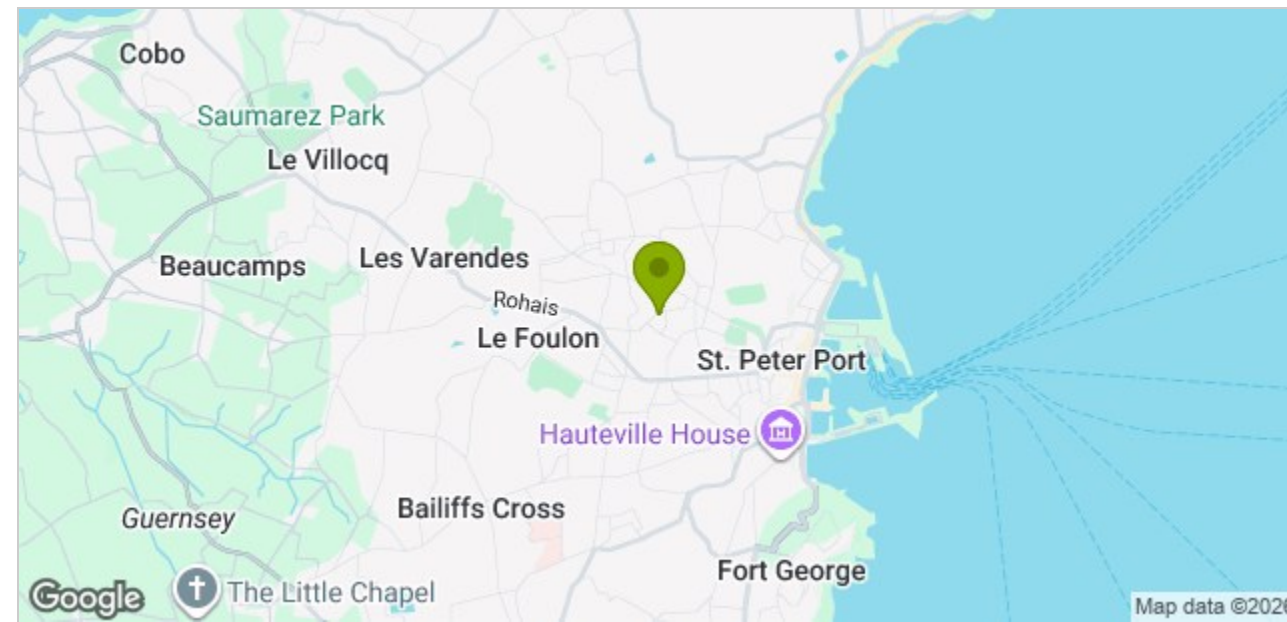


## Floor Plan



## Area Map



## Viewing

Please contact our Lettings Office on 01481 723636 if you wish to arrange a viewing appointment for this property or require further information.

These particulars, whilst believed to be accurate are set out as a general outline only for guidance and do not constitute any part of an offer or contract. Intending purchasers should not rely on them as statements of representation of fact, but must satisfy themselves by inspection or otherwise as to their accuracy. No person in this firm's employment has the authority to make or give any representation or warranty in respect of the property.

11 Smith Street, St Peter Port, Guernsey, GY1 4BA  
Tel: 01481 723636 hello@lovelsproperty.com

[www.lovelsproperty.com](http://www.lovelsproperty.com)  
Est 1879



# La Ruche La Gibauderie

St. Peter Port, Guernsey, GY1 1XJ

£2,950 Per Month





Description

This delightful four-bedroom terraced house offers a perfect blend of comfort and convenience. Ideal for families or those seeking a spacious home, the property features a welcoming lounge that invites relaxation and a well-appointed kitchen diner, a family bathroom and four generously sized bedrooms, one offering an ensuite shower room. Outside is an enclosed courtyard and a detached garage with parking for one car. This property not only welcomes children and pets but also offers a warm and inviting atmosphere that is sure to make you feel right at home. If you are looking for a spacious and versatile family home in the heart of St. Peter Port, this charming townhouse is not to be missed.

- 4 Bed Terraced House
- Close to Town Centre
- Parking and Garden
- Kids and Pets Accepted
- Available July 2026

