



Apartment 2, La Cigale
St Peter Port



Apartment 2 La Cigale, St. Peter Port

This modern apartment, in a small block is spacious and bright. It is only a few minutes from the seafront and a short walk to town. Shops and bus routes are very nearby too. It is well suited to and investor or first time buyer. Parking is on-street, and nearby too. Viewings are available now. The property will be available in January when the current tenant moves out.

To find out more contact Lovells on 723636

Le Bouet, St. Peter Port, GY1 2AZ.

£285,000









directions

<https://w3w.co/slab.luring.spoil>

Fittings

All fitted flooring, the curtains, blinds, light fittings and the kitchen appliances as fitted.

Services

Mains electricity, water and drainage. Electric central heating and double glazing.

Possession

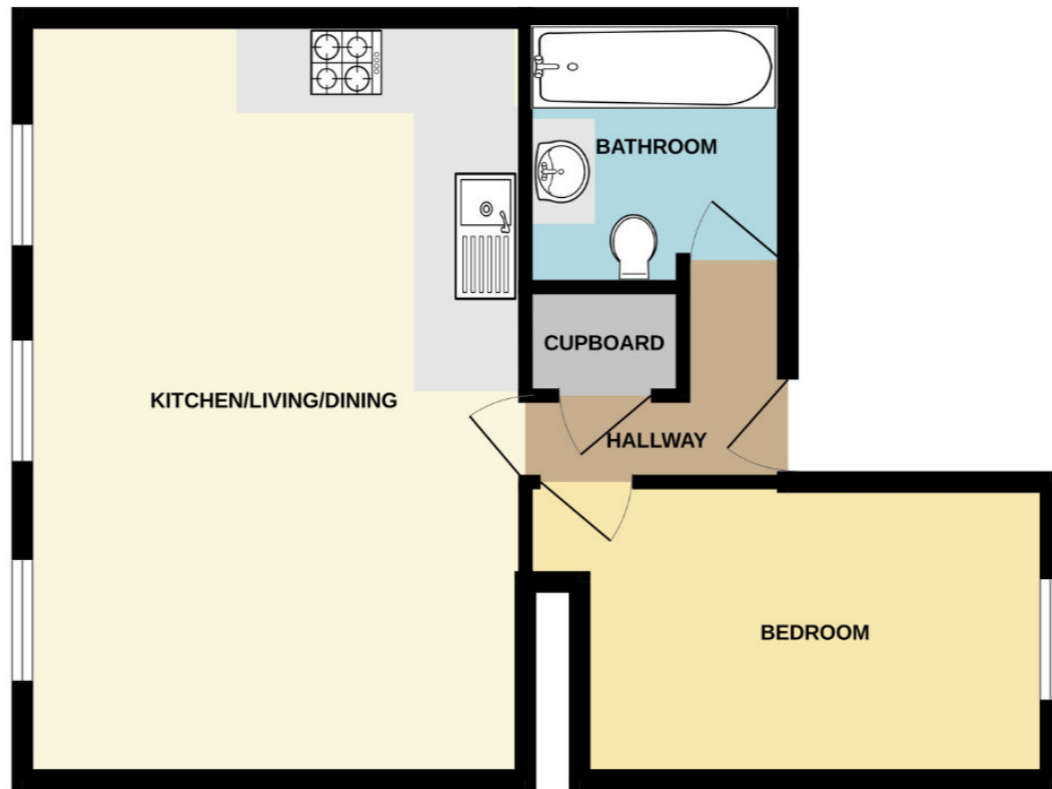
By arrangement.

Viewing

Strictly by appointment with Lovell & Partners.

Disclaimer

Lovell and Partners Ltd for themselves and for the vendors or lessors of this property whose agents are, give notice that these particulars are for a guidance only, and do not form part of any offer or contract, nor can their accuracy be relied upon by third parties who should verify all information for themselves through inspection or otherwise. Neither Lovell and Partners Ltd nor any person in their employment has authority to make or give any warranty or representation in respect of this property.

**Rooms**

Entrance Hallway - 7'9 max x 6' max
Bedroom - 12'8 x 8'6
Living/Kitchen/Dining Room - 21'10 x 13'8
Bathroom - 6'9 x 5'5

Further information

If you would like any further information or wish to view the property, please contact us on 01481 723636.

Monday to Friday: 8.45am to 5.00pm.

Saturdays and out of hours by prior arrangement

www.lovellsproperty.com
Est 1879

Lovell & Partners Ltd, 11 Smith Street, St Peter Port, Guernsey, GY1 4BA. Tel: 01481 723636.