



Flat 3, 5 Victoria Terrace

Church Road, St. Sampson, GY2 4LL

£2,100 Per Month

Flat 3, 5 Victoria terrace is a 2/3 bed roomed maisonette, situated in a convenient location close to local amenities and St Sampsons harbour. The accommodation is split over two floors and comprises of a newly fitted kitchen, lounge, separate dining room/bedroom 3 and a shower room on the first floor, whilst the second floor offers 2 further bedrooms. With good on street parking and communal courtyard area this property is well worth closer inspection. Suitable for a couple and one older child.

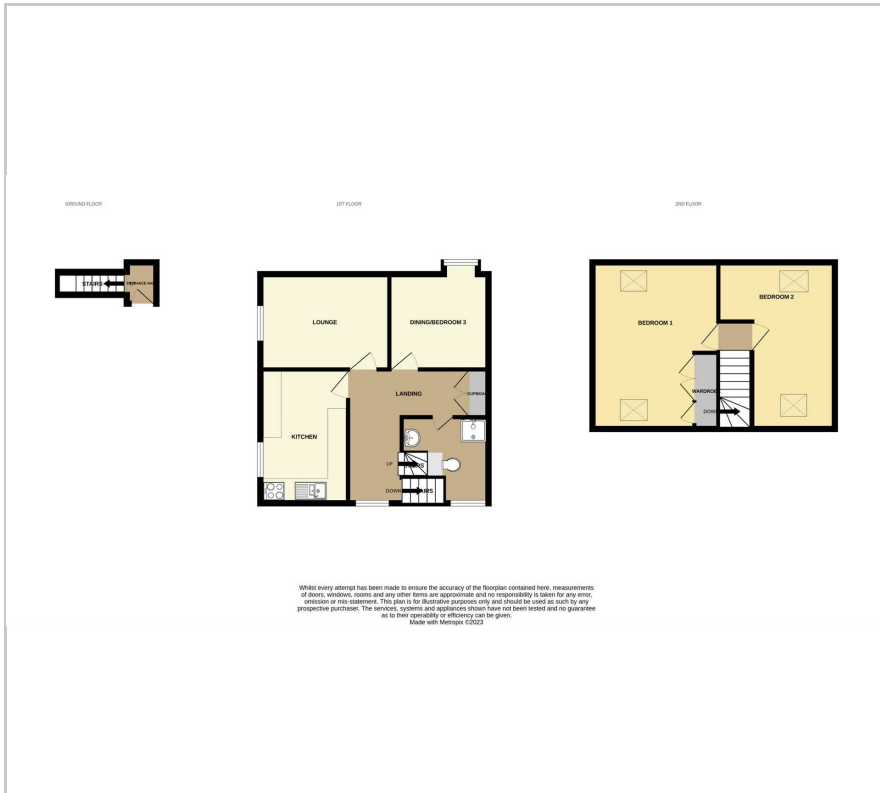
- 2/3 bed maisonette
- Suitable for a couple and one older child
- Good on street parking. Close to local amenities
- Available Immediately
- Not suitable for pets of smokers

Viewing

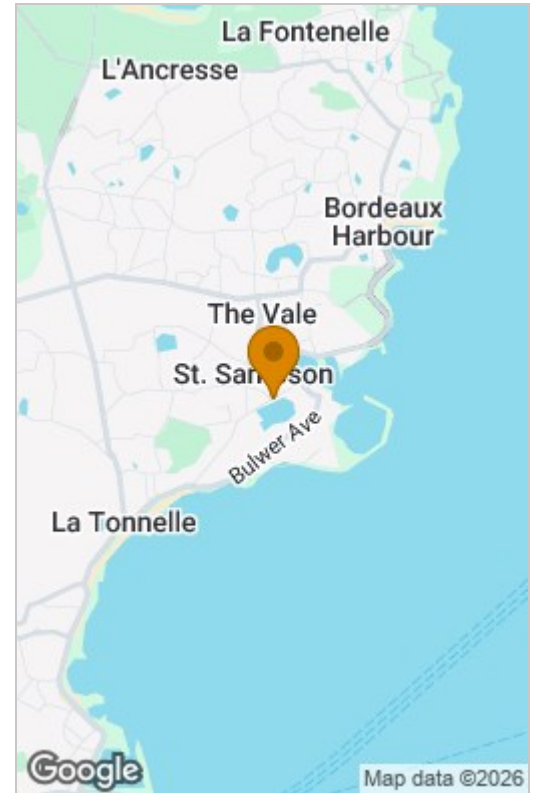
Please contact our Property Management Office on 01481 723630 if you wish to arrange a viewing appointment for this property or require further information.



Floor Plan



Area Map



These particulars, whilst believed to be accurate are set out as a general outline only for guidance and do not constitute any part of an offer or contract. Intending purchasers should not rely on them as statements of representation of fact, but must satisfy themselves by inspection or otherwise as to their accuracy. No person in this firm's employment has the authority to make or give any representation or warranty in respect of the property.