



Flat 4, Old Brewery

Park Lane, St Peter Port, GY1 1LR

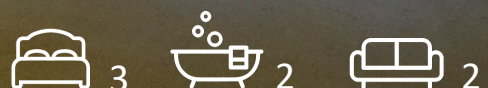
£2,000 PCM

This bright and spacious top-floor flat in an exclusive block of four is only a short walk from central St Peter Port. Accessed via the communal hallway a door leads to the south facing patio and balcony, both of which are for the sole use of Flat 4. The light and airy property provides a spacious lounge, a dining area, kitchen, good size hallway with storage space, an en-suite master bedroom, 2 further bedrooms and a bathroom. Suitable for sharers and one older child. No pets or smokers.

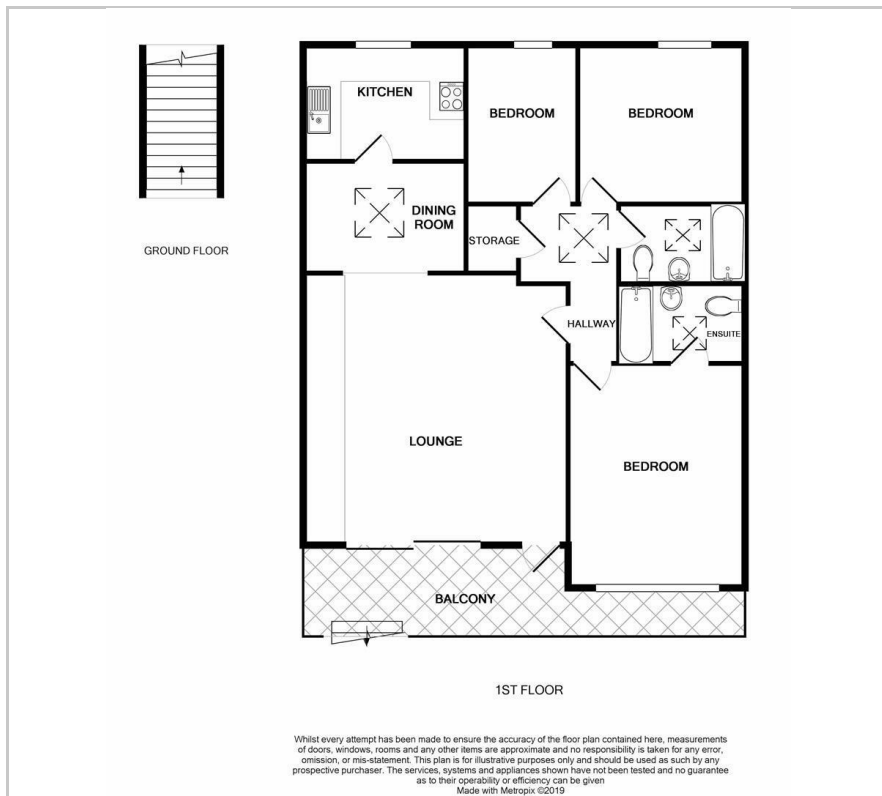
- Spacious first floor flat
- Available immediately
- Unfurnished
- No pets or smokers
- Balcony & garden
- Close to town centre

Viewing

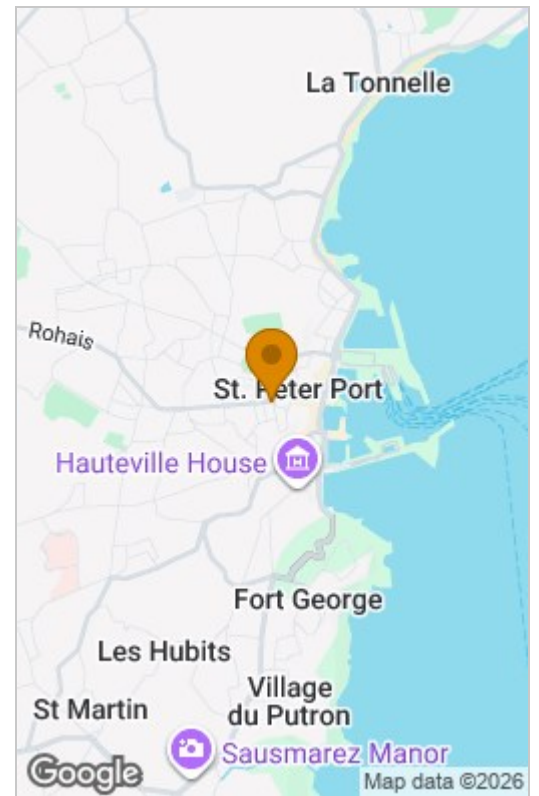
Please contact our Lettings Office on 01481 723636 if you wish to arrange a viewing appointment for this property or require further information.



Floor Plan



Area Map



These particulars, whilst believed to be accurate are set out as a general outline only for guidance and do not constitute any part of an offer or contract. Intending purchasers should not rely on them as statements of representation of fact, but must satisfy themselves by inspection or otherwise as to their accuracy. No person in this firm's employment has the authority to make or give any representation or warranty in respect of the property.