

Loch Vien

Vale



Offered to the local market is Loch Vien, a beautifully presented traditional Guernsey cottage ideally positioned just minutes from L'Ancrese Common and Beaucette Marina. Full of charm and character, this delightful home offers three double bedrooms, a spacious lounge and dining area, kitchen, bathroom and utility room. The current owner has thoughtfully upgraded the property throughout, carefully enhancing the original cottage while preserving its character and charm. Improvements include a complete rewire and replumb, a new roof, along with a number of additional quality upgrades. Perfect as a lock-up-and-leave or low-maintenance home, Loch Vien benefits from private front and rear patio and gravel garden areas, ideal for entertaining or simply relaxing in peaceful surroundings. The property also offers parking for one standard-sized vehicle or two smaller cars. This is a truly wonderful home that effortlessly combines character with modern comfort, making it an ideal downsize, charming main residence

- ✓ 3 Bedrooms
- ✓ Fully Renovated
By Current Owner
- ✓ Characterful
Property
Throughout
- ✓ Parking For 1/2
Vehicles
- ✓ Scope To
Increase Parking
- ✓ LR3380
- ✓ 1 Bathroom
- ✓ Excellent Finish
Throughout
- ✓ Low Maintenance
Gardens
- ✓ Lovely Coastal
Walks Around
The Area
- ✓ TRP 146

or excellent long-term investment opportunity. Viewing is highly recommended to fully appreciate everything Loch Vien has to offer.



Accommodation

Ground Floor

Lounge/Diner

17' 7" x 14' 4" (5.36m x 4.37m)

Kitchen

Appliances include Candy 4 ring electric hob, Cooke & Lewis single oven, cooker hood & Logic Fridge.

11' 5" x 6' 8" (3.48m x 2.03m)

Bathroom

8' 0" x 6' 0" (2.44m x 1.83m)

Utility

Includes Candy washing machine.

8' 0" x 5' 0" (2.44m x 1.52m)

Rear Porch

Built in storage.

5' 0" x 4' 0" (1.52m x 1.22m)

Bedroom 2

15' 5" x 12' 0" (4.70m x 3.66m)

W/C

8' 0" x 4' 6" (2.44m x 1.37m)

Boot Room

Stairs leading up to first floor.
9' 0" x 6' 6" (2.74m x 1.98m)

First Floor

Bedroom 1

Plumbing in place for En-Suite Bathroom.
19' 0" x 14' 0" (5.79m x 4.27m)

Bedroom 3

Max.
15' 0" x 12' 5" (4.57m x 3.78m)

Services

Mains electricity, water and drainage. Oil central heating.

Price includes

Floor coverings, curtains/blinds, appliances as listed and light fittings.

Possession

By arrangement.

Viewing

Strictly by appointment.

Please note

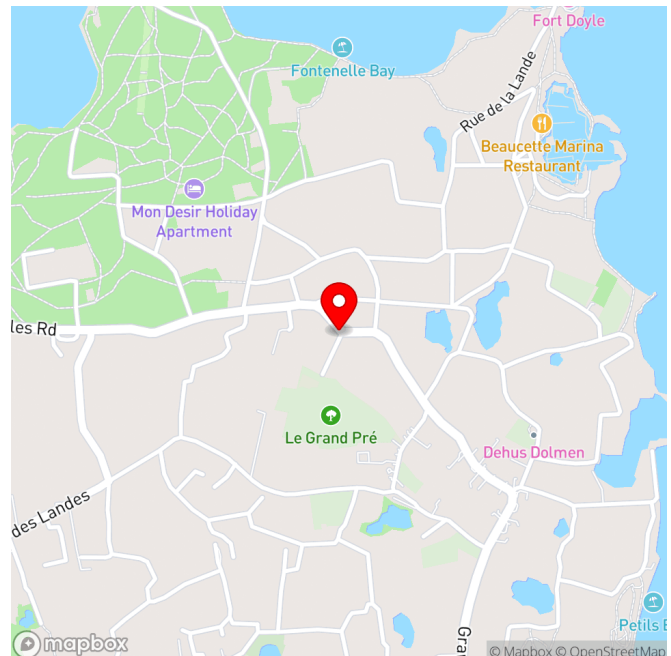
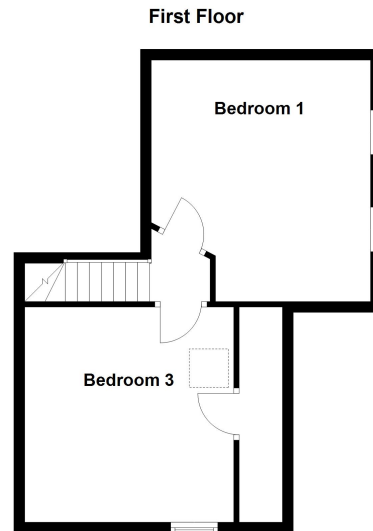
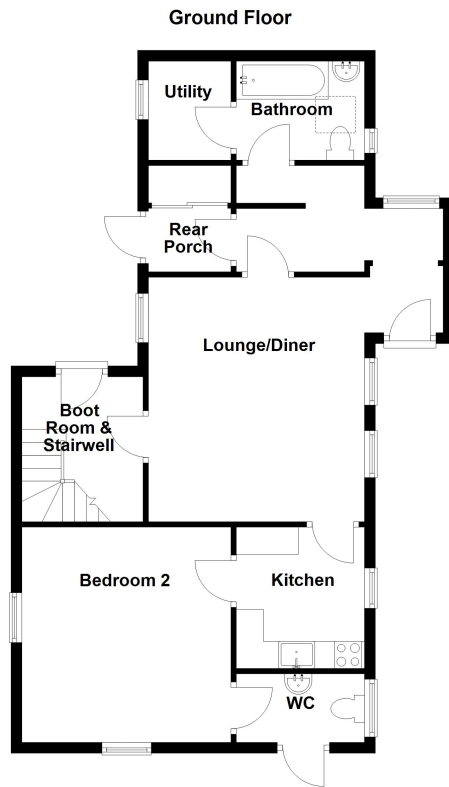
-
If the recipient of these details should be party to negotiations or actions which seek to preclude, or are contrary to, the interests of CRANFORDS ESTATE AGENCY LTD, as selling agents, they may be liable for any fees which would otherwise have been due to CRANFORDS ESTATE AGENCY LTD.

These particulars do not constitute any part of an offer or contract. No responsibility is accepted as to the accuracy of these particulars or statements made by



our staff concerning the above property. Any intending purchaser must satisfy himself to the correctness of such statements and particulars. All negotiations to be conducted.





For clarification we wish to inform prospective purchasers that these sales particulars have been prepared as a general guide. They are not an offer of contract, nor part of one. You should not rely on the content therein or on statements, in writing or by word of mouth, provided by us in respect of the property, its condition or its value. We have not undertaken a detailed survey, nor tested the services, appliances and specific fittings. Room sizes are approximate and should not be relied upon for carpets and furnishings. Cranfords Estate Agents Limited.



