

Flat 6, 2 Weighbridge House

St Sampson



Cranfords are delighted to present Flat 6, Weighbridge House to the Guernsey local market. Situated on the first floor of this well-maintained building, the property is offered in move-in condition whilst also providing an excellent opportunity for a new owner to modernise and personalise to their own taste. This property enjoys a highly convenient location just a stone's throw from the Bridge and its range of amenities. While the property does not have allocated parking, there is ample on-street parking available in the surrounding area. Accessed via a communal entrance hall, the flat is positioned up one flight of stairs and along the corridor. Internally, the entrance hall provides space for coats and shoes and includes a useful boiler/storage cupboard offering additional practicality. The accommodation comprises a generously sized double bedroom and a bathroom located off the hallway, with the well-proportioned lounge/diner positioned at the end, creating a comfortable and welcoming living space. The kitchen

- ✓ 1 Bedroom
- ✓ 1 Bathroom
- ✓ First Floor Flat
- ✓ Ideal Buy To Let Or First Time Buy
- ✓ Ample On Street Parking In The Area
- ✓ Short Stroll To The Bridge
- ✓ No Onward Chain
- ✓ Move-In Condition
- ✓ Cosmetic Upgrading Desired
- ✓ LR3353

is accessed directly from the lounge and has been well cared for by the previous tenants. The kitchen also includes appliances as listed, along with plumbing for a washer/dryer. Early viewing is recommended to appreciate the potential and superb location on offer. For more information or to arrange a viewing, please contact Cranfords on 243878



Accommodation

Ground Floor

Entrance hall

0.91m)

9' 2" x 3' 0" (2.79m x

Bathroom

8' 2" x 5' 7" (2.49m x 1.70m)

Bedroom

13' 3" x 10' 7" (4.04m x 3.23m)

Lounge/Diner

15' 4" x 11' 4" (4.67m x 3.45m)

Kitchen/Breakfast

Appliances include electric Beko 4 ring hob, electric Beko oven, Hotpoint fridge/freezer & Magnet extractor fan. Plumbing in place for washer/dryer.

10' 7" x 9' 4" (3.23m x 2.84m)



Services

Mains electricity, water and drainage. Electric central heating.

Price Includes

Floor coverings, curtains/blinds, appliances as listed and light fittings.

Possession

By arrangement.

Viewing

Strictly by appointment.

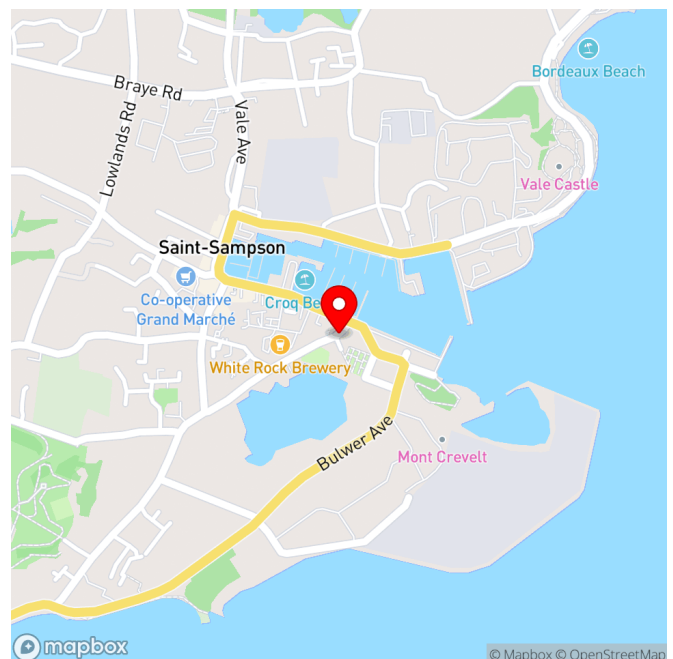
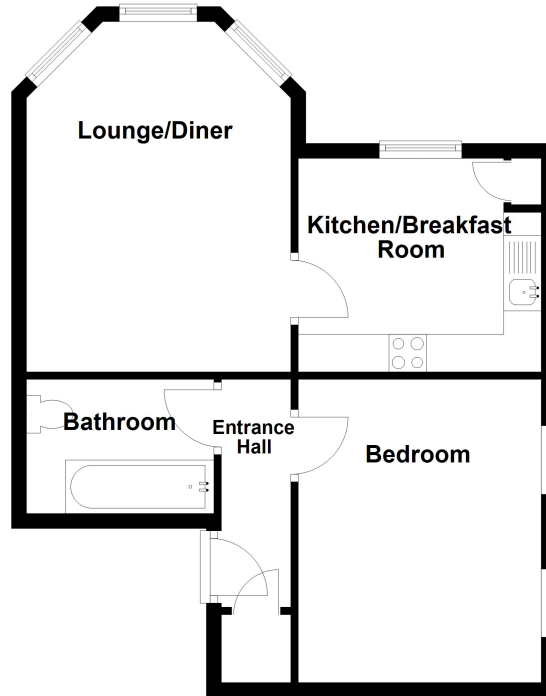
Please note

-
If the recipient of these details should be party to negotiations or actions which seek to preclude, or are contrary to, the interests of CRANFORDS ESTATE AGENCY LTD, as selling agents, they may be liable for any fees which would otherwise have been due to CRANFORDS ESTATE AGENCY LTD.

These particulars do not constitute any part of an offer or contract. No responsibility is accepted as to the accuracy of these particulars or statements made by our staff concerning the above property. Any intending purchaser must satisfy himself to the correctness of such statements and particulars. All negotiations to be conducted.



Ground Floor



For clarification we wish to inform prospective purchasers that these sales particulars have been prepared as a general guide. They are not an offer of contract, nor part of one. You should not rely on the content therein or on statements, in writing or by word of mouth, provided by us in respect of the property, its condition or its value. We have not undertaken a detailed survey, nor tested the services, appliances and specific fittings. Room sizes are approximate and should not be relied upon for carpets and furnishings. Cranfords Estate Agents Limited.