



Mount View

La Rocquette, Castel, GY5 7AZ

£775,000

LOCAL MARKET

SOLE AGENT

A charming detached cottage, situated just moments from the West Coast offering flexible living accommodation.

Mount View currently comprises three bedrooms served by two bath/shower rooms, a spacious lounge, dining room, a well-appointed main kitchen and a further kitchenette. The former garage has been thoughtfully adapted and is currently utilised as a cosy snug, adding to the property's flexible layout.

Externally, the property benefits from generous parking and an attractive garden.

School catchment: Castel Primary School / Les Beaucamps High School

Key facts



- Charming detached 3 bed cottage
- Close to West Coast
- Flexible accommodation
- Two bath/shower rooms
- Generous parking
- Lovely lawned garden

t 01481 236039
e enq@cooperbrouard.com
w cooperbrouard.com



 cooper
brouard

GUERNSEY'S ESTATE AGENT







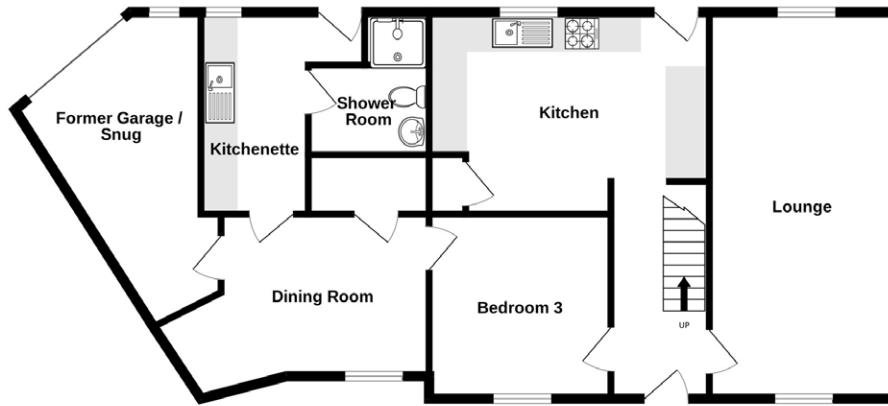




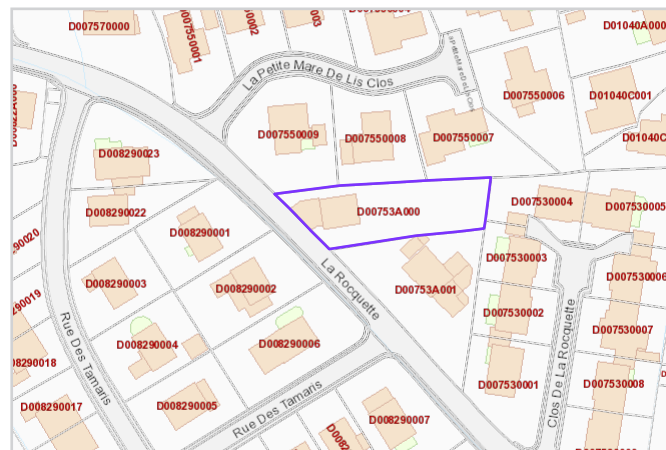
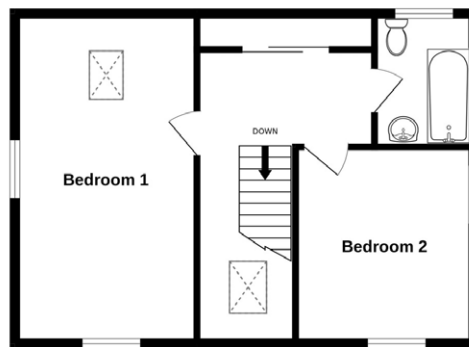


Floorplan

GROUND FLOOR



1ST FLOOR



Mapping / Aerial Photography Copyright © States of Guernsey 2026

GROUND FLOOR

Entrance hall

12'5 x 5'7 (3.8m x 1.7m)

Lounge

22' x 10'7 (6.7m x 3.3m)

Kitchen

16'2 x 10'9 (4.9m x 3.3m)

APPLIANCES

- Hotpoint freezer
- Hisense fridge
- Blomberg tumble dryer
- Blomberg oven
- Indesit washing machine

Bedroom 3

10'6 x 10'5 (3.2m x 3.2m)

Dining room

13'2 x 7' (4m x 2.1m)

Kitchenette

8' x 7'2 (2.4m x 2.2m)

APPLIANCES

- Indesit tumble dryer
- Hotpoint washing machine
- Belling oven
- LEC fridge

Shower room

8' x 4'7 (2.4m x 1.4m)

Former garage / snug

15'7 x 10'7 max (4.7m x 3.3m)

FIRST FLOOR

Landing

12'5 x 8'5 max (3.8m x 2.6m)

Bedroom 1

17'3 x 11'8 (5.2m x 3.6m)

Bedroom 2

11'2 x 9'8 (3.4m x 3m)

Bathroom

8' x 5'4 (2.4m x 1.6m)

EXTERIOR

The property is approached off the road and there is an area laid to gravel which provides ample parking. There is a lovely lawned garden with mature trees.

Price to include: Fitted carpets, curtains, light fittings and appliances as listed.

Services: Mains electricity and water, mains drainage, double glazed uPVC.

Perry's ref: 14 C2

what3words: halt.buffoon.scarf

TRP: 163

CONTACT OUR LOCAL MARKET TEAM



Matt



Ben



Liz



Courtney



Hannah