



Apartment 4

£545,000

British & Foreign School, New Place, Vauvert, St Peter Port, GY1 1ND

LOCAL MARKET

SOLE AGENT

An impressive two-bedroom duplex in the heart of St Peter Port set within a charming Victorian school conversion, offering stylish and spacious living in a prime central location. Converted in 2002, the property blends character features with modern convenience.

The accommodation comprises a bright and contemporary kitchen/diner, a generous living area with large windows that flood the space with natural light, a double bedroom, and a well-appointed bathroom on the first floor. Steps lead up to the second floor, where you'll find a spacious main bedroom complete with a modern en-suite shower room.

Further benefits include two parking spaces, one within a secure gated car park and another on the development grounds.

Key facts



- Smart duplex apartment
- Finished to good spec
- Spacious accommodation
- Allocated parking for two cars
- Walking distance of Town

t 01481 236039
e enq@cooperbrouard.com
w cooperbrouard.com



 cooper
brouard

GUERNSEY'S ESTATE AGENT





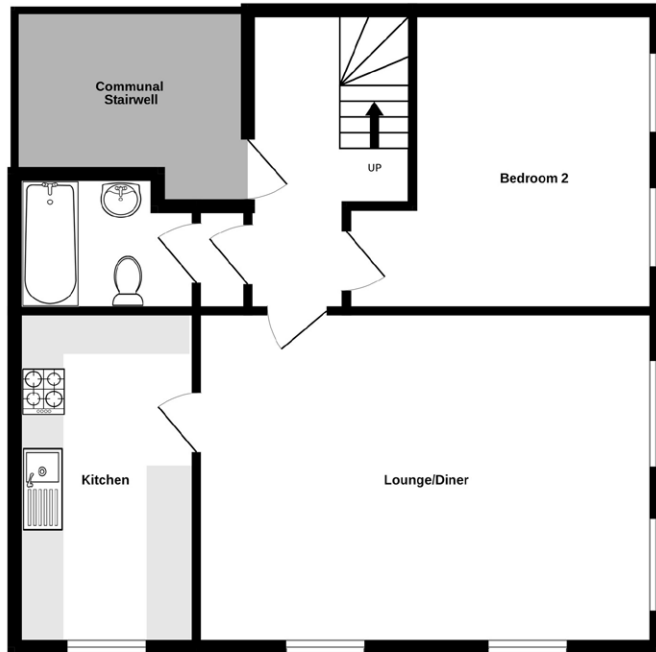




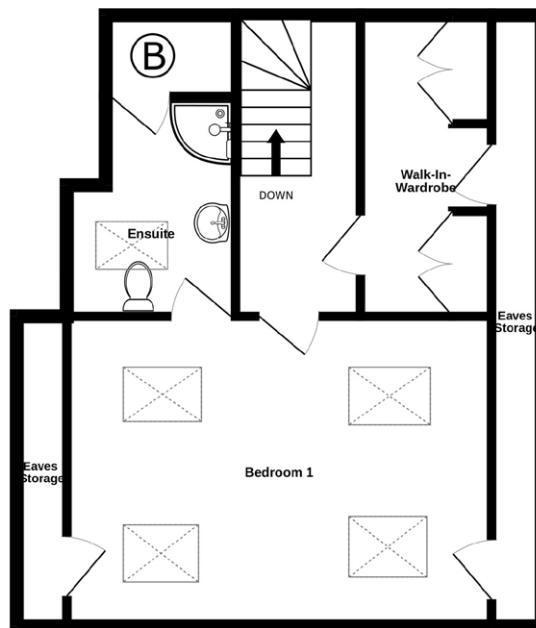


Floorplan

3RD FLOOR



4TH FLOOR



Entrance hall

13'1 x 5'4 (4m x 1.6m)

Lounge/Diner

19'5 x 14'1 (5.9m x 4.2m)

Kitchen

14'1 x 7'8 (4.2m x 2.3m)

APPLIANCES

- Smeg oven
- Smeg microwave
- Smeg dishwasher
- Smeg American style fridge/freezer
- Hotpoint washing machine/dryer

Bedroom 2

13'8 x 12'8 (4.1m x 3.8m)

Bathroom

7'4 x 5'6 (2.2m x 1.6m)

FIRST FLOOR

Walk-in-Wardrobe

12'5 x 5'4 (3.7m x 1.6m)

Bedroom 1

17'11 x 12'10 (5.4m x 3.9m)

Ensuite

9'10 x 8'8 (3m x 2.6m)

EXTERIOR

There are two allocated parking space, one located in a secure garage with additional storage space and a second outdoor parking space.

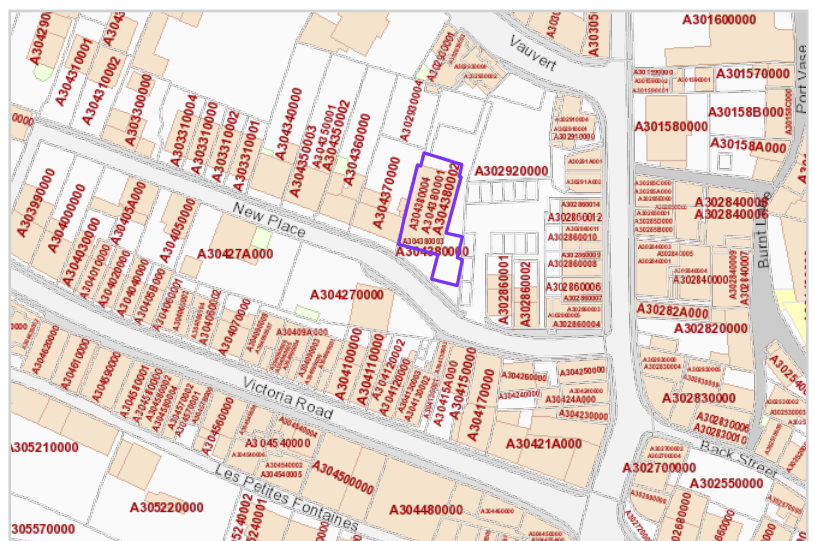
Price to include: Fitted carpets, curtains, light fittings and appliances as listed.

Services: Mains electricity and water, mains drainage, electric central heating, uPVC double glazing.

Perry's ref: Town H9

what3words: faunas.eloped.bugged

TRP: 125



Mapping / Aerial Photography Copyright © States of Guernsey 2025

CONTACT OUR LOCAL MARKET TEAM



Matt



Ben



Liz



Courtney



Hannah



La Grande Rue,
St Martin's,
Guernsey GY4 6RR

t 01481 236039
e enq@cooperbrouard.com
w cooperbrouard.com

